

## Product datasheet for **TA369544**

### ATP1B4 Rabbit Polyclonal Antibody

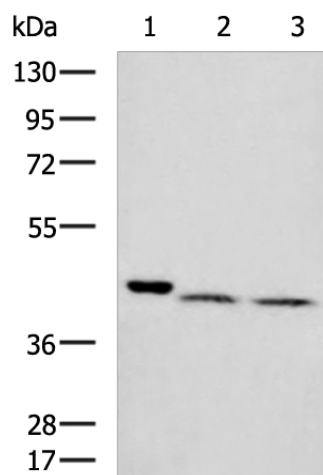
#### Product data:

Product Type:	Primary Antibodies
Applications:	WB
Recommended Dilution:	WB: 1000-5000 WB positive control: Mouse brain tissue, Human cerebella tissue, Human cerebrum tissue lysates
Reactivity:	Human, Mouse, Rat
Host:	Rabbit
Isotype:	IgG
Clonality:	Polyclonal
Immunogen:	Fusion protein of human ATP1B4
Formulation:	pH7.4 PBS, 0.05% NaN <sub>3</sub> , 40% Glycerol
Concentration:	lot specific
Purification:	Antigen affinity purification
Conjugation:	Unconjugated
Storage:	Store at -20°C.
Stability:	1 year
Predicted Protein Size:	42 kDa
Gene Name:	ATPase Na <sup>+</sup> /K <sup>+</sup> transporting family member beta 4
Database Link:	<a href="#">Entrez Gene 23439 Human Q9UN42</a>
Background:	This gene has been found in all vertebrate genomes sequenced to date. However, this gene has undergone a change in function in placental mammals compared to other species. Specifically, in fish, avian, and amphibian species, this gene encodes plasma membrane-bound beta-subunits of Na,K-ATPase. In placental mammals, the encoded protein interacts with the nuclear transcriptional coregulator SKIP and may be involved in the regulation of TGF-beta signaling. Two transcript variants encoding different isoforms have been found for this gene.
Synonyms:	ATP1B4



[View online »](#)

## Product images:



Gel: 8%SDS-PAGE  
Lysate: 40  $\mu$ g  
Lane 1-3: Mouse brain tissue  
Human cerebella tissue  
Human cerebrum tissue lysates  
Primary antibody: TA369544 (ATP1B4 Antibody)  
at dilution 1/1000  
Secondary antibody: Goat anti rabbit IgG at  
1/5000 dilution  
Exposure time: 40 seconds