

Product datasheet for **TA369543S**

MAT2B Rabbit Polyclonal Antibody

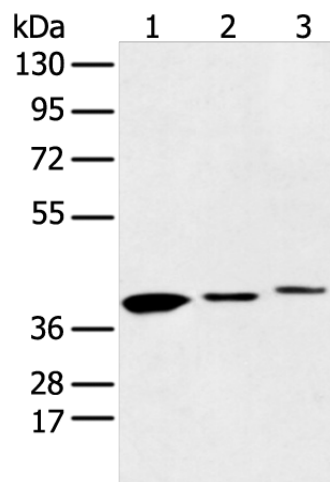
Product data:

| | |
|-------------------------|--|
| Product Type: | Primary Antibodies |
| Applications: | WB |
| Recommended Dilution: | WB: 500-2000 WB positive control: Human fetal liver tissue□231 cell and Human fetal brain tissue |
| Reactivity: | Human, Mouse, Rat |
| Host: | Rabbit |
| Isotype: | IgG |
| Clonality: | Polyclonal |
| Immunogen: | Fusion protein of human MAT2B |
| Formulation: | pH7.4 PBS, 0.05% NaN ₃ , 40% Glycerol |
| Purification: | Antigen affinity purification |
| Conjugation: | Unconjugated |
| Storage: | Store at -20°C. |
| Stability: | 1 year |
| Predicted Protein Size: | 38 kDa |
| Gene Name: | methionine adenosyltransferase 2B |
| Database Link: | Entrez Gene 27430 Human Q9NZL9 |
| Background: | The protein encoded by this gene belongs to the methionine adenosyltransferase (MAT) family. MAT catalyzes the biosynthesis of S-adenosylmethionine from methionine and ATP. This protein is the regulatory beta subunit of MAT. Alternative splicing results in multiple transcript variants encoding different isoforms. |
| Synonyms: | MAT-II; MATIIbeta; MGC12237; Nbla02999; SDR23E1; TGR |



[View online »](#)

Product images:



Gel: 8%SDS-PAGE

Lysate: 40 μ g

Lane 1-3: 231 cell

Human fetal liver and Human fetal brain tissue

Primary antibody: [TA369543] (MAT2B Antibody)
at dilution 1/500

Secondary antibody: Goat anti rabbit IgG at
1/8000 dilution

Exposure time: 30 seconds