

Product datasheet for **TA369542**

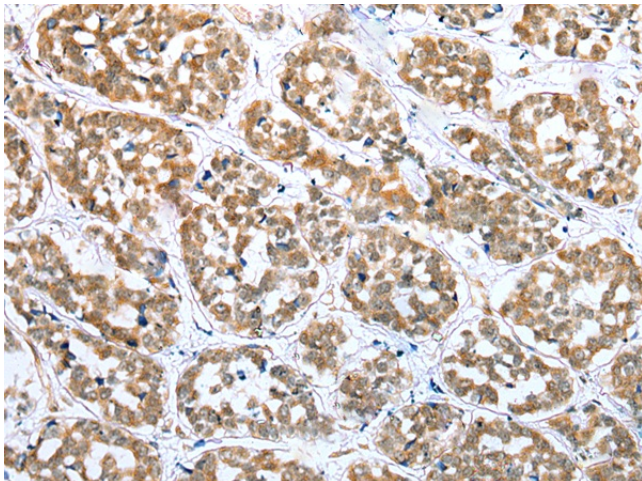
Endoplasmic reticulum metalloproteinase 1 (ERMP1) Rabbit Polyclonal Antibody

Product data:

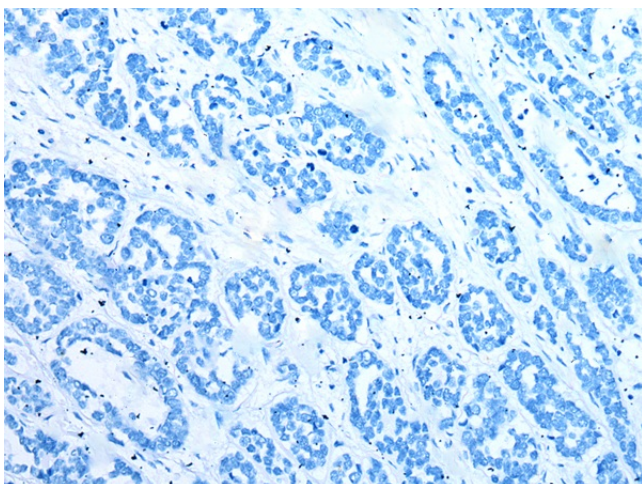
Product Type:	Primary Antibodies
Applications:	IHC
Recommended Dilution:	IHC: 25-100 Positive control: Human esophagus cancer Predicted cell location: Nucleus or Cytoplasm
Reactivity:	Human, Mouse, Rat
Host:	Rabbit
Isotype:	IgG
Clonality:	Polyclonal
Immunogen:	Fusion protein of human ERMP1
Formulation:	pH7.4 PBS, 0.05% NaN ₃ , 40% Glycerol
Concentration:	lot specific
Purification:	Antigen affinity purification
Conjugation:	Unconjugated
Storage:	Store at -20°C.
Stability:	1 year
Gene Name:	endoplasmic reticulum metalloproteinase 1
Database Link:	Entrez Gene 79956 Human Q7Z2K6
Background:	Within the ovary, required for the organization of somatic cells and oocytes into discrete follicular structures.
Synonyms:	bA207C16.3; Felix-ina; FLJ23309; FXNA; KIAA1815



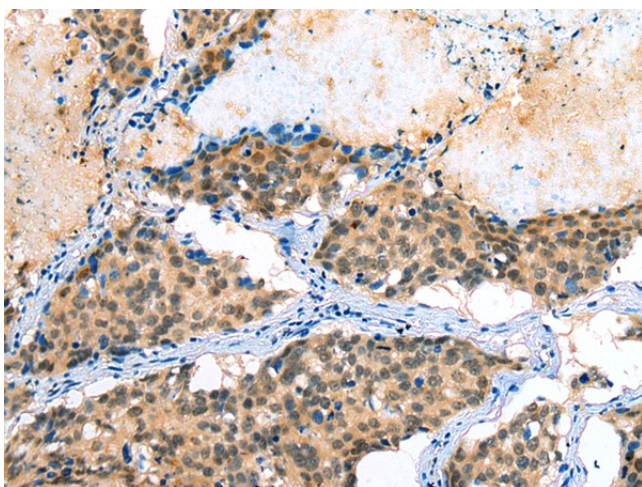
[View online »](#)

Product images:

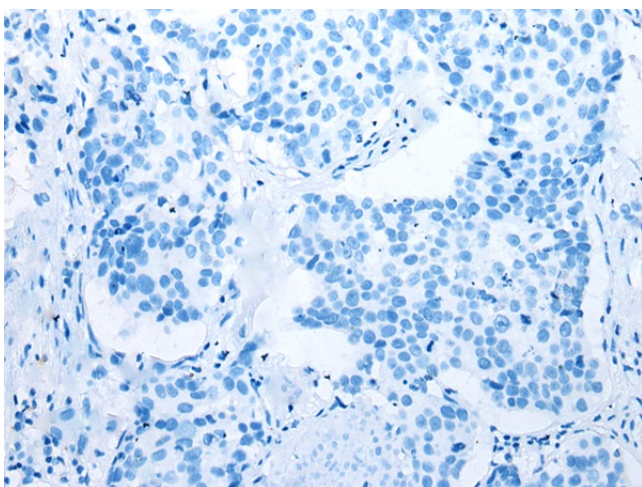
Immunohistochemistry of paraffin-embedded Human esophagus cancer tissue using TA369542 (ERMP1 Antibody) at dilution 1/30 (Original magnification: $\times 200$)



Immunohistochemistry of paraffin-embedded Human esophagus cancer tissue using TA369542 (ERMP1 Antibody) at dilution 1/30, treated with fusion protein. (Original magnification: $\times 200$)



Immunohistochemistry of paraffin-embedded Human lung cancer tissue using TA369542 (ERMP1 Antibody) at dilution 1/30 (Original magnification: ×200)



Immunohistochemistry of paraffin-embedded Human lung cancer tissue using TA369542 (ERMP1 Antibody) at dilution 1/30, treated with fusion protein. (Original magnification: ×200)