

Product datasheet for **TA369539**

FSD1L Rabbit Polyclonal Antibody

Product data:

Product Type:	Primary Antibodies
Applications:	IHC
Recommended Dilution:	IHC: 25-100 Positive control: Human esophagus cancer Predicted cell location: Cytoplasm
Reactivity:	Human, Mouse
Host:	Rabbit
Isotype:	IgG
Clonality:	Polyclonal
Immunogen:	Fusion protein of human FSD1L
Formulation:	pH7.4 PBS, 0.05% NaN ₃ , 40% Glycerol
Concentration:	lot specific
Purification:	Antigen affinity purification
Conjugation:	Unconjugated
Storage:	Store at -20°C.
Stability:	1 year
Gene Name:	fibronectin type III and SPRY domain containing 1 like
Database Link:	Entrez Gene 83856 Human Q9BXM9



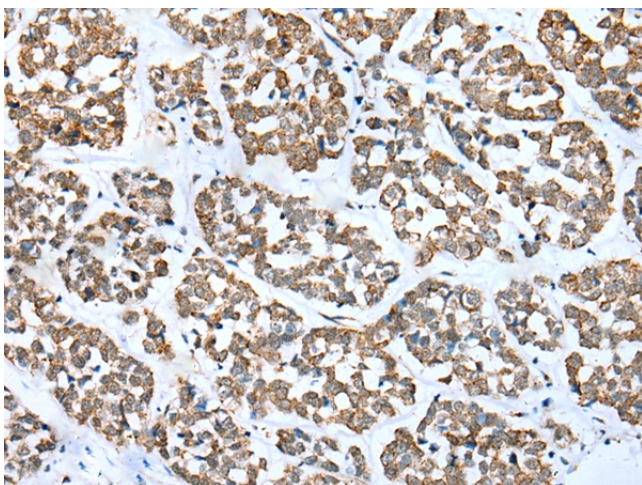
[View online »](#)

Background:

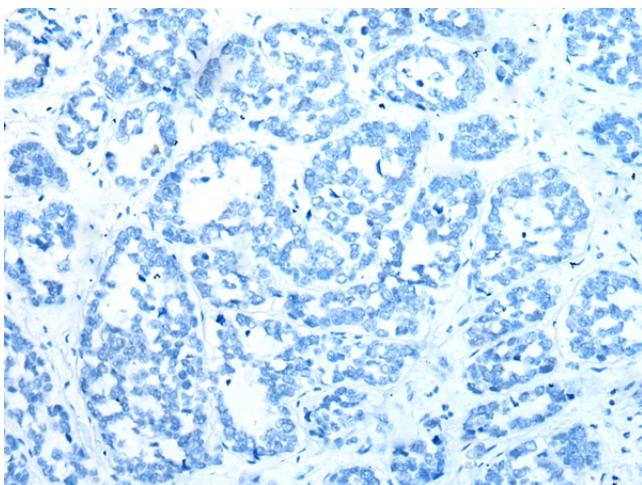
FSD1L (fibronectin type III and SPRY domain containing 1-like), also known as CCDC10 (coiled-coil domain-containing protein 10), CSDUFD1, MIR1 or FSD1CL, is a 530 amino acid protein containing one B30.2/SPRY domain, one COS domain, and a fibronectin type-III domain. Existing as three alternatively spliced isoforms, FSD1L is expressed primarily in brain, with lower levels of expression found in thymus, pituitary and testis. FSD1L may function in microtubule binding during interphase and is encoded by a gene that maps to human chromosome 9q31.2. Chromosome 9 consists of about 145 million bases and comprises approximately 4% of the human genome and encodes nearly 900 genes. Considered to play a role in gender determination, deletion of the distal portion of 9p can lead to development of male to female sex reversal, the phenotype of a female with a male X,Y genotype.

Synonyms:

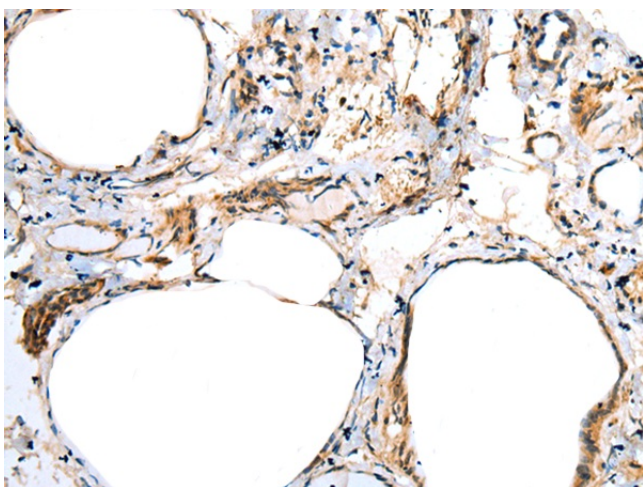
CCDC10; CSDUFD1; FSD1-like; FSD1CL; FSD1NL; MGC45564; MIR1

Product images:

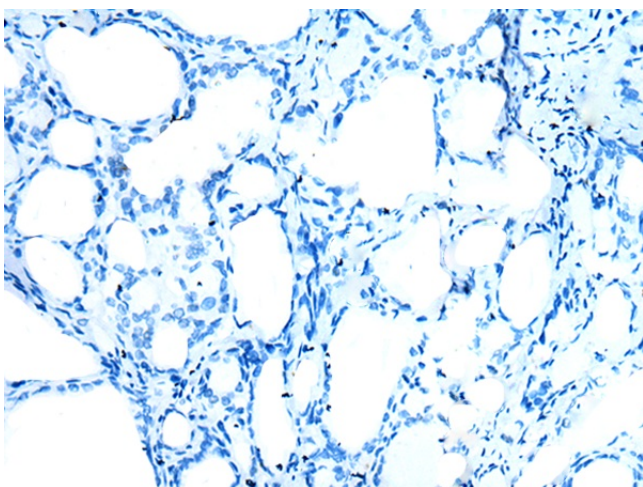
Immunohistochemistry of paraffin-embedded Human esophagus cancer tissue using TA369539 (FSD1L Antibody) at dilution 1/30 (Original magnification: x200)



Immunohistochemistry of paraffin-embedded Human esophagus cancer tissue using TA369539 (FSD1L Antibody) at dilution 1/30, treated with fusion protein. (Original magnification: x200)



Immunohistochemistry of paraffin-embedded Human thyroid cancer tissue using TA369539 (FSD1L Antibody) at dilution 1/30 (Original magnification: $\times 200$)



Immunohistochemistry of paraffin-embedded Human thyroid cancer tissue using TA369539 (FSD1L Antibody) at dilution 1/30, treated with fusion protein. (Original magnification: $\times 200$)