

## Product datasheet for **TA369528S**

### CCBL1 (KYAT1) Rabbit Polyclonal Antibody

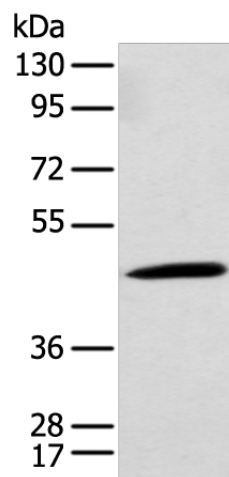
#### Product data:

Product Type:	Primary Antibodies
Applications:	IHC, WB
Recommended Dilution:	WB: 500-2000 WB positive control: Rat kidney tissue IHC: 25-100 Positive control: Human lung cancer Predicted cell location: Cytoplasm
Reactivity:	Human, Rat
Host:	Rabbit
Isotype:	IgG
Clonality:	Polyclonal
Immunogen:	Fusion protein of human KYAT1
Formulation:	pH7.4 PBS, 0.05% NaN <sub>3</sub> , 40% Glycerol
Purification:	Antigen affinity purification
Conjugation:	Unconjugated
Storage:	Store at -20°C.
Stability:	1 year
Predicted Protein Size:	48 kDa
Gene Name:	kynurenine aminotransferase 1
Database Link:	<a href="#">Entrez Gene 883 Human Q16773</a>

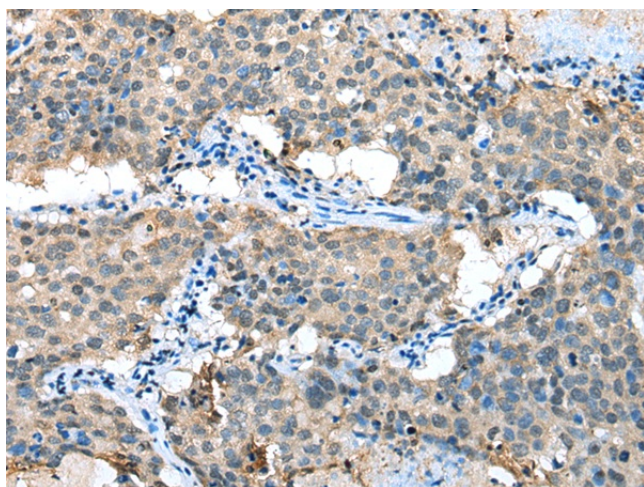
**Background:** This gene encodes a cytosolic enzyme that is responsible for the metabolism of cysteine conjugates of certain halogenated alkenes and alkanes. This metabolism can form reactive metabolites leading to nephrotoxicity and neurotoxicity. Increased levels of this enzyme have been linked to schizophrenia. Multiple transcript variants that encode different isoforms have been identified for this gene. [provided by RefSeq, Jul 2008]



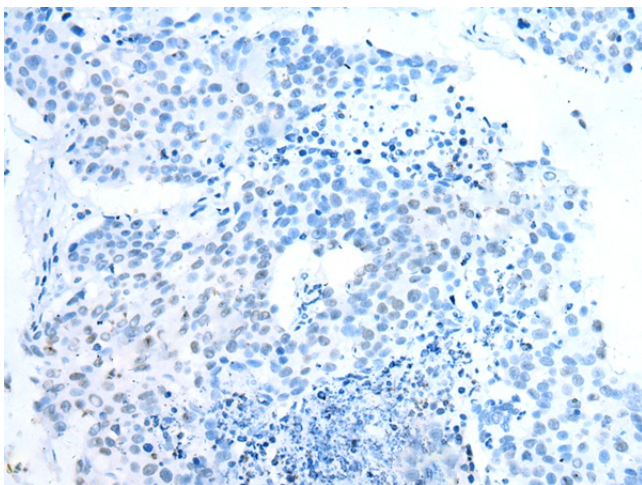
[View online »](#)

**Product images:**

Gel: 8%SDS-PAGE  
Lysate: 40 µg  
Lane: Rat kidney tissue  
Primary antibody: [TA369528] (KYAT1 Antibody)  
at dilution 1/300  
Secondary antibody: Goat anti rabbit IgG at  
1/8000 dilution  
Exposure time: 30S



Immunohistochemistry of paraffin-embedded  
Human lung cancer tissue using [TA369528]  
(KYAT1 Antibody) at dilution 1/20 (Original  
magnification: ×200)



Immunohistochemistry of paraffin-embedded Human lung cancer tissue using [TA369528] (KYAT1 Antibody) at dilution 1/20, treated with fusion protein. (Original magnification: ×200)