

Product datasheet for **TA369527**

RPL35A Rabbit Polyclonal Antibody

Product data:

Product Type:	Primary Antibodies
Applications:	IHC, WB
Recommended Dilution:	WB: 200-1000 WB positive control: PC-3,231,293T and Hela cell IHC: 25-100 Positive control: Human brain Predicted cell location: Cytoplasm
Reactivity:	Human, Mouse, Rat
Host:	Rabbit
Isotype:	IgG
Clonality:	Polyclonal
Immunogen:	Full length fusion protein
Formulation:	pH7.4 PBS, 0.05% NaN ₃ , 40% Glycerol
Concentration:	lot specific
Purification:	Antigen affinity purification
Conjugation:	Unconjugated
Storage:	Store at -20°C.
Stability:	1 year
Predicted Protein Size:	13 kDa
Gene Name:	ribosomal protein L35a
Database Link:	Entrez Gene 6165 Human P18077



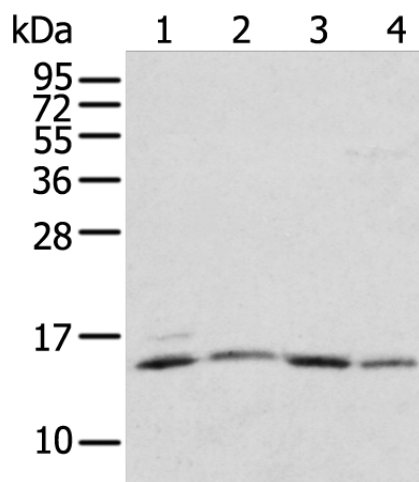
[View online »](#)

Background:

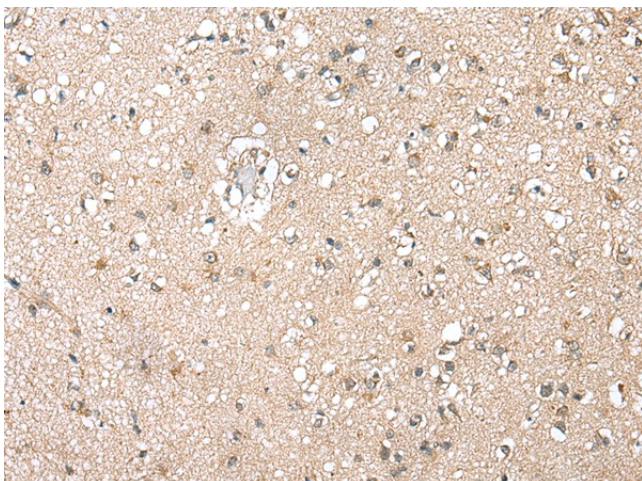
Ribosomes, the organelles that catalyze protein synthesis, consist of a small 40S subunit and a large 60S subunit. Together these subunits are composed of 4 RNA species and approximately 80 structurally distinct proteins. This gene encodes a ribosomal protein that is a component of the 60S subunit. The protein belongs to the L35AE family of ribosomal proteins. It is located in the cytoplasm. The rat protein has been shown to bind to both initiator and elongator tRNAs, and thus, it is located at the P site, or P and A sites, of the ribosome.

Synonyms:

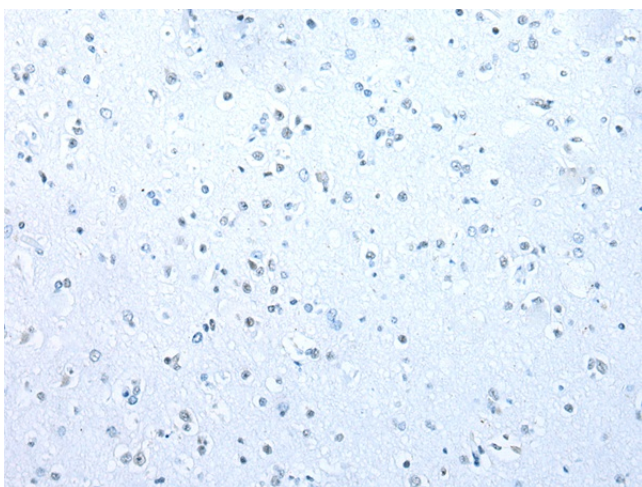
DBA5; OTTHUMP00000207885

Product images:

Gel: 12%SDS-PAGE
Lysate: 40 µg
Lane 1-4: PC-3
231
293T and Hela cell
Primary antibody: TA369527 (RPL35A Antibody)
at dilution 1/200
Secondary antibody: Goat anti rabbit IgG at
1/8000 dilution
Exposure time: 1 minute



Immunohistochemistry of paraffin-embedded
Human brain tissue using TA369527 (RPL35A
Antibody) at dilution 1/20 (Original magnification:
×200)



Immunohistochemistry of paraffin-embedded Human brain tissue using TA369527 (RPL35A Antibody) at dilution 1/20, treated with fusion protein. (Original magnification: $\times 200$)