

## Product datasheet for **TA369508**

### NDUFB6 Rabbit Polyclonal Antibody

#### Product data:

Product Type:	Primary Antibodies
Applications:	IHC, WB
Recommended Dilution:	WB: 500-2000 WB positive control: 293T□Hela□PC-3□Lncap and 231 cell□Human fetal muscle tissue IHC: 25-100 Positive control: Human prostate cancer Predicted cell location: Cytoplasm
Reactivity:	Human
Host:	Rabbit
Isotype:	IgG
Clonality:	Polyclonal
Immunogen:	Full length fusion protein
Formulation:	pH7.4 PBS, 0.05% NaN <sub>3</sub> , 40% Glycerol
Concentration:	lot specific
Purification:	Antigen affinity purification
Conjugation:	Unconjugated
Storage:	Store at -20°C.
Stability:	1 year
Predicted Protein Size:	15 kDa
Gene Name:	NADH:ubiquinone oxidoreductase subunit B6
Database Link:	<a href="#">Entrez Gene 4712 Human O95139</a>



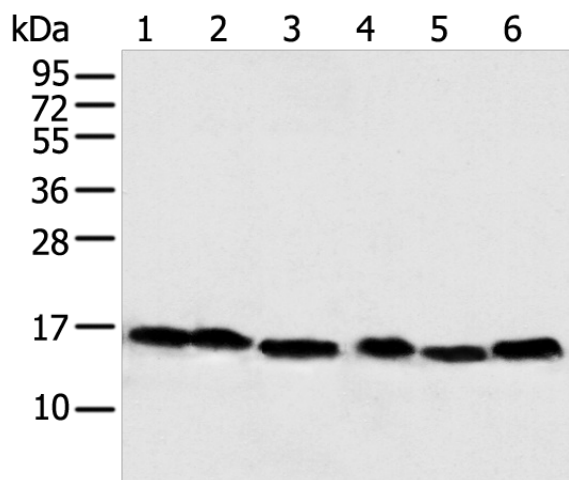
[View online »](#)

**Background:**

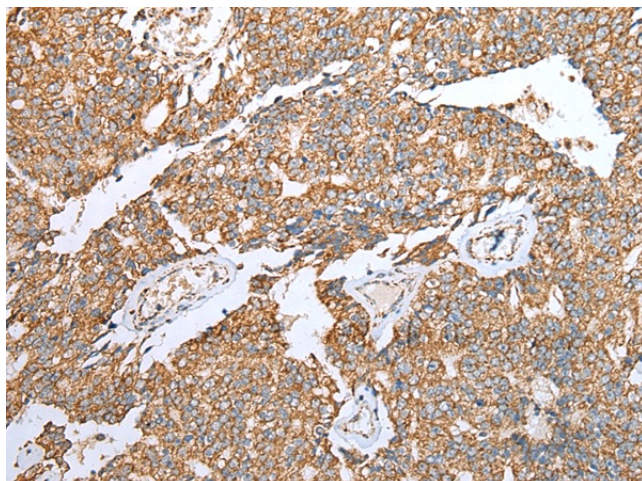
The protein encoded by this gene is a subunit of the multisubunit NADH:ubiquinone oxidoreductase (complex I). Mammalian complex I is composed of 45 different subunits. It locates at the mitochondrial inner membrane. This protein has NADH dehydrogenase activity and oxidoreductase activity. It transfers electrons from NADH to the respiratory chain. The immediate electron acceptor for the enzyme is believed to be ubiquinone. Alternative splicing occurs at this locus and three transcript variants encoding distinct isoforms have been identified.

**Synonyms:**

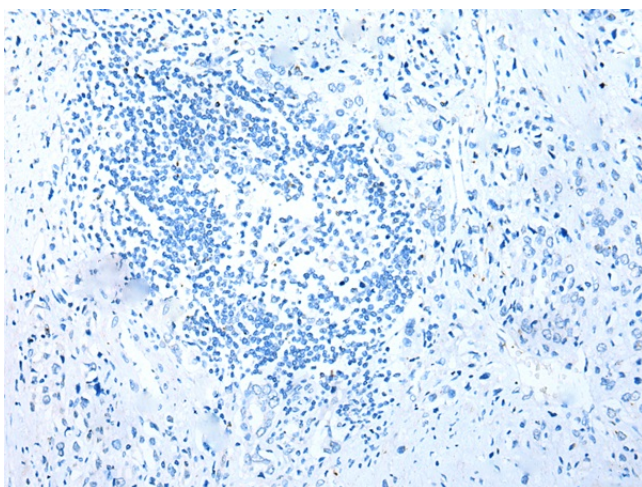
B17; CI; CI-B17; MGC13675

**Product images:**


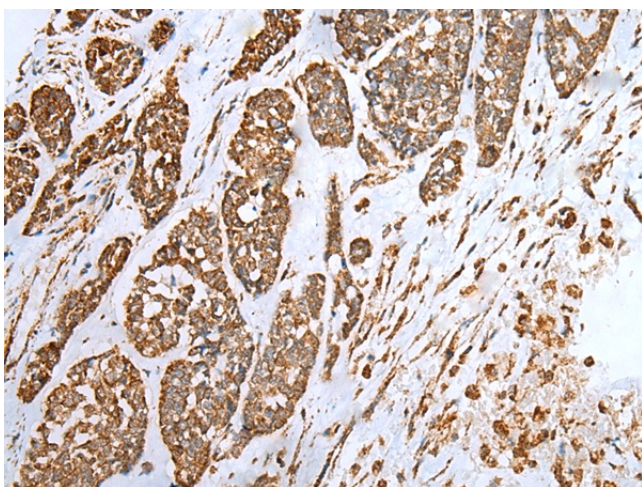
Gel: 12%SDS-PAGE  
 Lysate: 40 µg  
 Lane 1-6: 293T  
 HeLa  
 PC-3  
 Lncap and 231 cell  
 Human fetal muscle tissue  
 Primary antibody: TA369508 (NDUFB6 Antibody)  
 at dilution 1/500  
 Secondary antibody: Goat anti rabbit IgG at  
 1/8000 dilution  
 Exposure time: 1 second



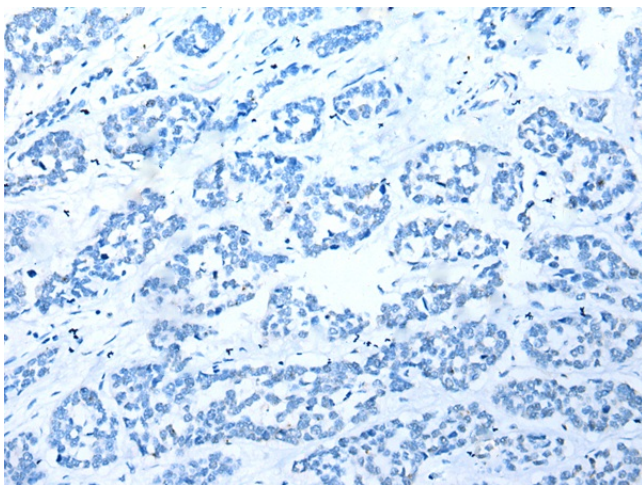
Immunohistochemistry of paraffin-embedded  
 Human prostate cancer tissue using TA369508  
 (NDUFB6 Antibody) at dilution 1/20 (Original  
 magnification: ×200)



Immunohistochemistry of paraffin-embedded Human prostate cancer tissue using TA369508 (NDUFB6 Antibody) at dilution 1/20, treated with fusion protein. (Original magnification: x200)



Immunohistochemistry of paraffin-embedded Human esophagus cancer tissue using TA369508 (NDUFB6 Antibody) at dilution 1/20 (Original magnification: x200)



Immunohistochemistry of paraffin-embedded Human esophagus cancer tissue using TA369508 (NDUFB6 Antibody) at dilution 1/20, treated with fusion protein. (Original magnification: x200)