

Product datasheet for **TA369506**

NDUFB10 Rabbit Polyclonal Antibody

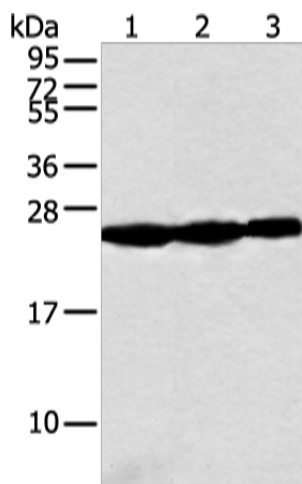
Product data:

Product Type:	Primary Antibodies
Applications:	IHC, WB
Recommended Dilution:	WB: 500-2000 WB positive control: Human fetal muscle tissue, Raji and Jurkat cell IHC: 25-100 Positive control: Human lung cancer Predicted cell location: Cytoplasm
Reactivity:	Human
Host:	Rabbit
Isotype:	IgG
Clonality:	Polyclonal
Immunogen:	Full length fusion protein
Formulation:	pH7.4 PBS, 0.05% NaN ₃ , 40% Glycerol
Concentration:	lot specific
Purification:	Antigen affinity purification
Conjugation:	Unconjugated
Storage:	Store at -20°C.
Stability:	1 year
Predicted Protein Size:	21 kDa
Gene Name:	NADH:ubiquinone oxidoreductase subunit B10
Database Link:	Entrez Gene 4716 Human O96000
Background:	NADH dehydrogenase [ubiquinone] 1 beta subcomplex subunit 10 is an enzyme that in humans is encoded by theNDUFB10 gene. NADH dehydrogenase (ubiquinone) 1 beta subcomplex subunit 10 is an accessory subunit of the NADH dehydrogenase (ubiquinone) complex, located in the mitochondrial inner membrane. It is also known as Complex I and is the largest of the five complexes of the electron transport chain.
Synonyms:	CI-PDSW; PDSW

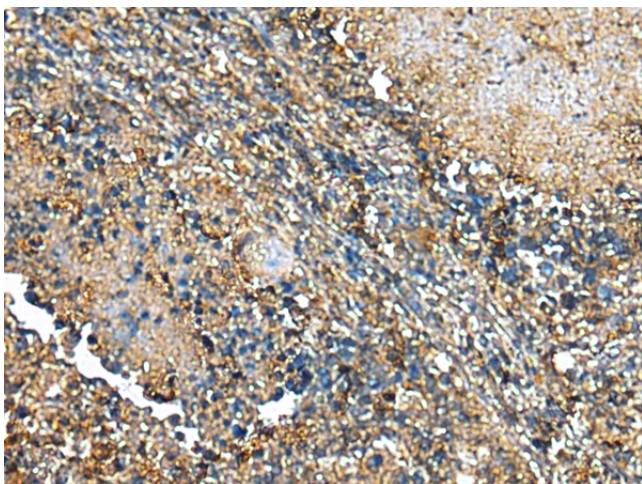


[View online »](#)

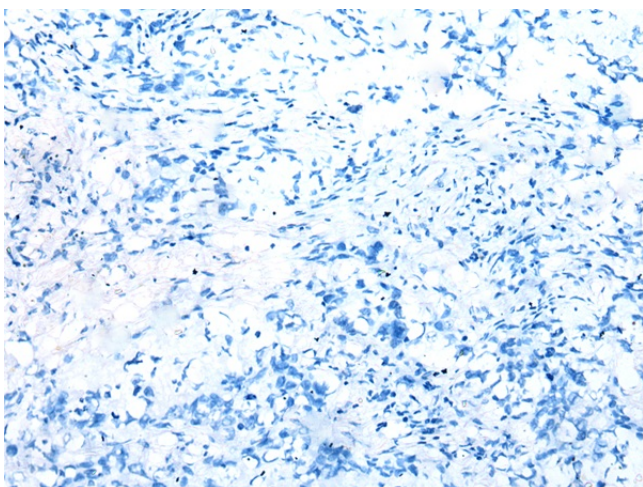
Product images:



Gel: 12%SDS-PAGE
Lysate: 40 μ g
Lane 1-3: Human fetal muscle tissue
Raji and Jurkat cell
Primary antibody: TA369506 (NDUFB10 Antibody)
at dilution 1/300
Secondary antibody: Goat anti rabbit IgG at
1/8000 dilution
Exposure time: 10 seconds



Immunohistochemistry of paraffin-embedded
Human lung cancer tissue using TA369506
(NDUFB10 Antibody) at dilution 1/20 (Original
magnification: $\times 200$)



Immunohistochemistry of paraffin-embedded Human lung cancer tissue using TA369506 (NDUFB10 Antibody) at dilution 1/20, treated with fusion protein. (Original magnification: ×200)