

Product datasheet for **TA369492**

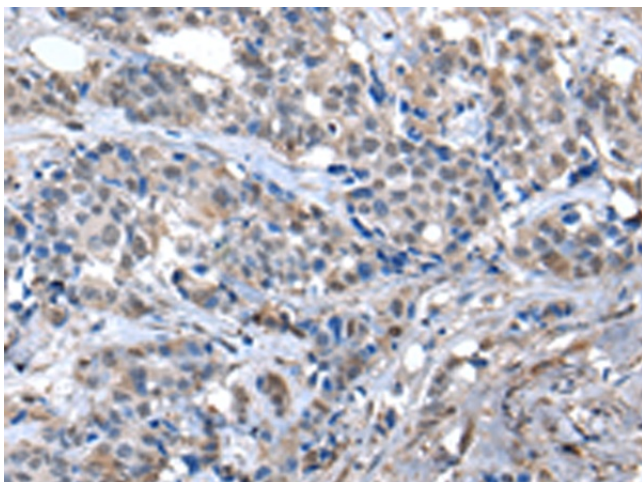
ZFP2 Rabbit Polyclonal Antibody

Product data:

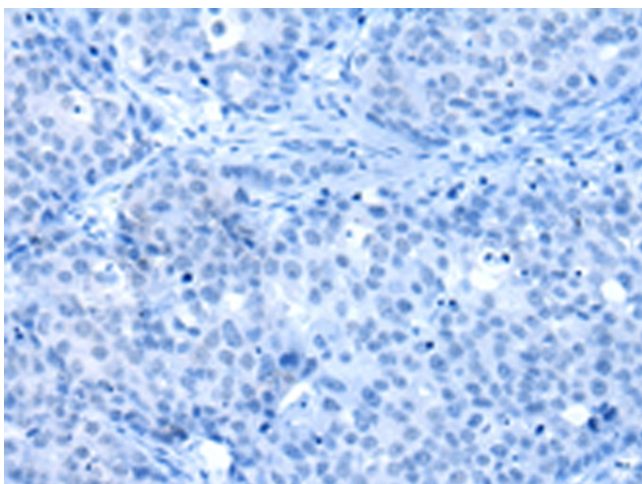
Product Type:	Primary Antibodies
Applications:	IHC
Recommended Dilution:	IHC: 30-150 Positive control: Human breast cancer Predicted cell location: Cytoplasm and Nucleus
Reactivity:	Human, Mouse
Host:	Rabbit
Isotype:	IgG
Clonality:	Polyclonal
Immunogen:	Fusion protein of human ZFP2
Formulation:	pH7.4 PBS, 0.05% NaN ₃ , 40% Glycerol
Concentration:	lot specific
Purification:	Antigen affinity purification
Conjugation:	Unconjugated
Storage:	Store at -20°C.
Stability:	1 year
Gene Name:	ZFP2 zinc finger protein
Database Link:	Entrez Gene 80108 Human Q6ZN57
Background:	Probable transcription factor involved in neuronal differentiation and/or phenotypic maintenance.
Synonyms:	FLJ21628; Zfp-2; ZNF751



[View online »](#)

Product images:

Immunohistochemistry of paraffin-embedded Human breast cancer tissue using TA369492 (ZFP2 Antibody) at dilution 1/40 (Original magnification: $\times 200$)



Immunohistochemistry of paraffin-embedded Human breast cancer tissue using TA369492 (ZFP2 Antibody) at dilution 1/40, treated with fusion protein. (Original magnification: $\times 200$)