

## Product datasheet for **TA369489**

### ZFP28 Rabbit Polyclonal Antibody

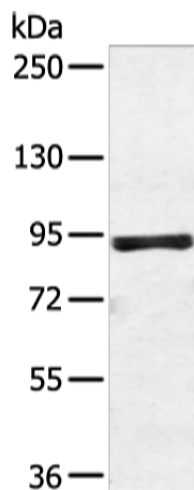
#### Product data:

Product Type:	Primary Antibodies
Applications:	WB
Recommended Dilution:	WB: 200-1000 WB positive control: 293T cell
Reactivity:	Human
Host:	Rabbit
Isotype:	IgG
Clonality:	Polyclonal
Immunogen:	Fusion protein of human ZFP28
Formulation:	pH7.4 PBS, 0.05% NaN <sub>3</sub> , 40% Glycerol
Concentration:	lot specific
Purification:	Antigen affinity purification
Conjugation:	Unconjugated
Storage:	Store at -20°C.
Stability:	1 year
Predicted Protein Size:	99 kDa
Gene Name:	ZFP28 zinc finger protein
Database Link:	<a href="#">Entrez Gene 140612 Human Q8NHY6</a>
Background:	May be involved in transcriptional regulation. May have a role in embryonic development.
Synonyms:	DKFZp686K03205; KIAA1431; MGC104540; mkr5; Zfp-28



[View online »](#)

## Product images:



Gel: 6%SDS-PAGE  
Lysate: 40  $\mu$ g  
Lane: 293T cell  
Primary antibody: TA369489 (ZFP28 Antibody) at dilution 1/450  
Secondary antibody: Goat anti rabbit IgG at 1/8000 dilution  
Exposure time: 10 seconds