

## Product datasheet for **TA369485**

### ZDHHC20 Rabbit Polyclonal Antibody

#### Product data:

Product Type:	Primary Antibodies
Applications:	IHC
Recommended Dilution:	IHC: 25-100 Positive control: Human thyroid cancer Predicted cell location: Cytoplasm
Reactivity:	Human, Mouse
Host:	Rabbit
Isotype:	IgG
Clonality:	Polyclonal
Immunogen:	Fusion protein of human ZDHHC20
Formulation:	pH7.4 PBS, 0.05% NaN <sub>3</sub> , 40% Glycerol
Concentration:	lot specific
Purification:	Antigen affinity purification
Conjugation:	Unconjugated
Storage:	Store at -20°C.
Stability:	1 year
Gene Name:	zinc finger DHHC-type containing 20
Database Link:	<a href="#">Entrez Gene 253832 Human Q5W0Z9</a>

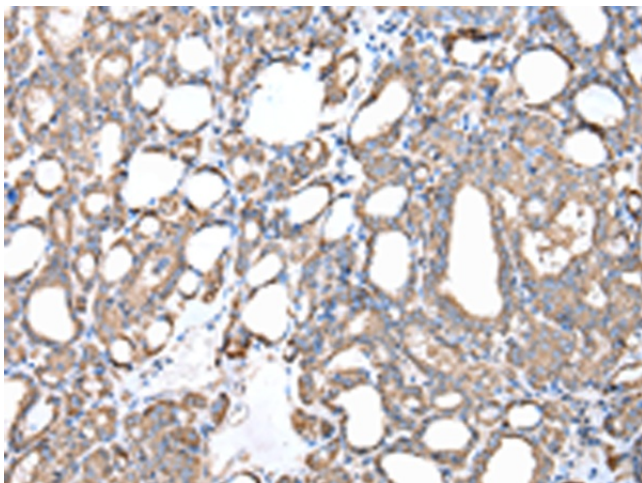
**Background:** Zinc-finger proteins contain DNA-binding domains and have a wide variety of functions, most of which encompass some form of transcriptional activation or repression. ZDHHC20 (zinc finger, DHHC-type containing 20) is a 365 amino acid multi-pass membrane protein that contains one DHHC-type zinc finger and is thought to function as a palmitoyltransferase, catalyzing the transformation of palmitoyl-CoA and a cysteine-conjugated protein to an S-palmitoyl protein and free CoA. In response to DNA damage, ZDHHC20, which exists as multiple alternatively spliced isoforms, may be phosphorylated by ATM or ATR. The gene encoding ZDHHC20 maps to human chromosome 13, which houses over 400 genes, such as BRCA2 and RB1, and comprises nearly 4% of the human genome.



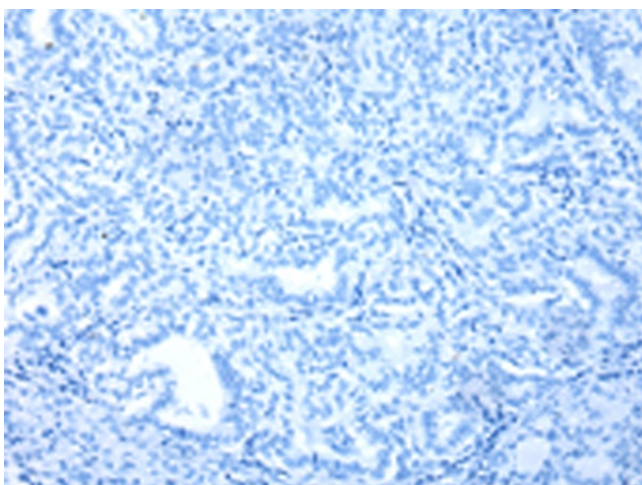
[View online »](#)

Synonyms: 4933421L13Rik; DHHC-20; FLJ25952; MGC126005

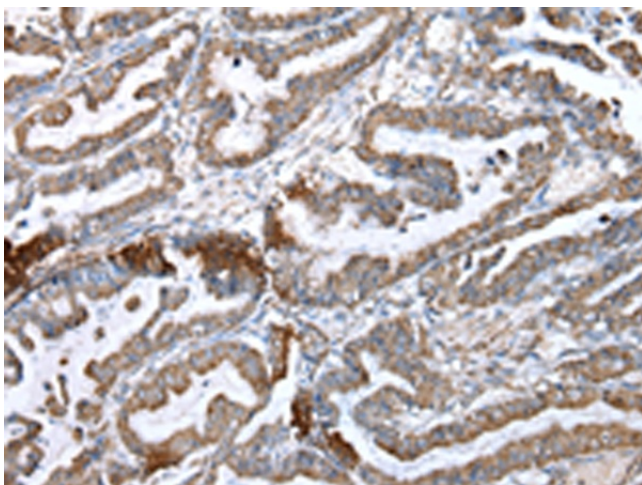
### Product images:



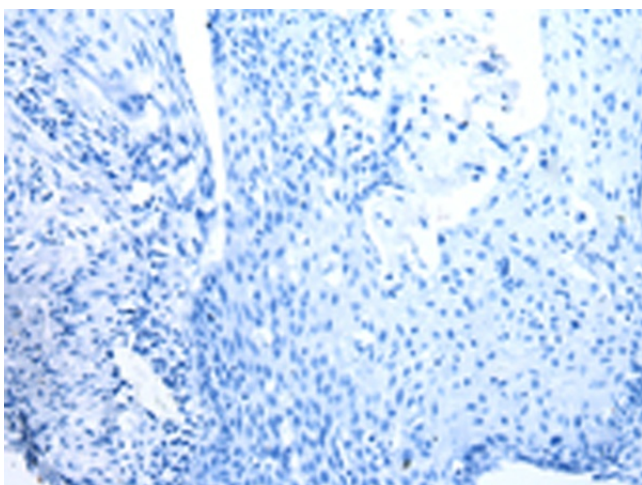
Immunohistochemistry of paraffin-embedded Human thyroid cancer tissue using TA369485 (ZDHHC20 Antibody) at dilution 1/20 (Original magnification:  $\times 200$ )



Immunohistochemistry of paraffin-embedded Human thyroid cancer tissue using TA369485 (ZDHHC20 Antibody) at dilution 1/20, treated with fusion protein. (Original magnification:  $\times 200$ )



Immunohistochemistry of paraffin-embedded Human esophagus cancer tissue using TA369485 (ZDHHC20 Antibody) at dilution 1/20 (Original magnification:  $\times 200$ )



Immunohistochemistry of paraffin-embedded Human esophagus cancer tissue using TA369485 (ZDHHC20 Antibody) at dilution 1/20, treated with fusion protein. (Original magnification:  $\times 200$ )