

## Product datasheet for **TA369484S**

### ZCWCC1 (MORC2) Rabbit Polyclonal Antibody

#### Product data:

|                         |  |
|-------------------------|--|
| Product Type:           | Primary Antibodies   |
| Applications:           | IHC, WB  |
| Recommended Dilution:   | WB: 500-2000<br>WB positive control: 231, 293T, Hela and A172 cell lysates<br>IHC: 25-100<br>Positive control: Human lung cancer<br>Predicted cell location: Nucleus |
| Reactivity:             | Human  |
| Host:                   | Rabbit   |
| Isotype:                | IgG  |
| Clonality:              | Polyclonal   |
| Immunogen:              | Fusion protein of human MORC2  |
| Formulation:            | pH7.4 PBS, 0.05% NaN <sub>3</sub> , 40% Glycerol   |
| Purification:           | Antigen affinity purification  |
| Conjugation:            | Unconjugated   |
| Storage:                | Store at -20°C.  |
| Stability:              | 1 year   |
| Predicted Protein Size: | 118 kDa  |
| Gene Name:              | MORC family CW-type zinc finger 2  |
| Database Link:          | <a href="#">Entrez Gene 22880 Human Q9Y6X9</a>   |



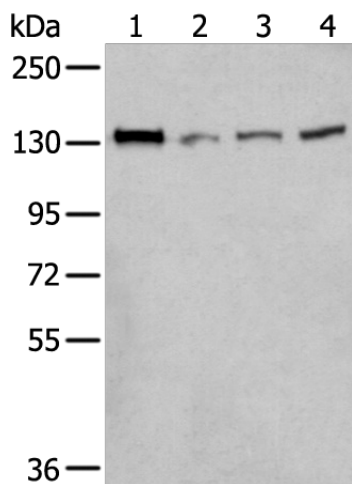
[View online »](#)

**Background:**

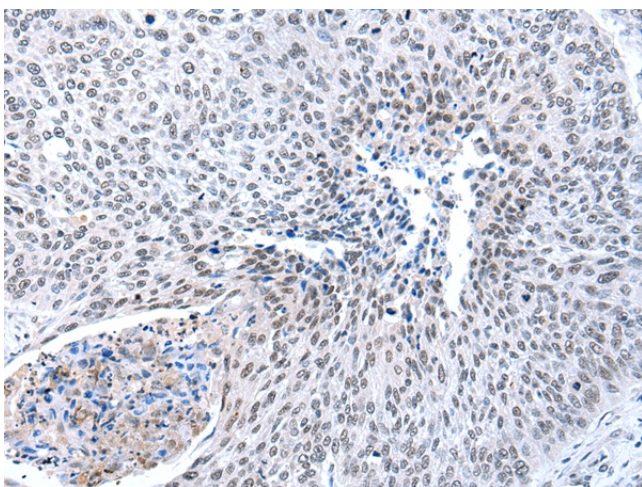
The CW domain is a structural module found in many vertebrate, parasitic and plant proteins. It consists of a mononuclear four-cysteine zinc-finger domain that plays a role in DNA binding, chromatin methylation and early embryonic development. ZCWCC1 (zinc finger CW-type coiled-coil domain protein 1), also known as MORC2 (MORC family CW-type zinc finger protein 2) or ZCW3, is a 1,032 amino acid protein that contains one CW-type zinc finger domain. ZCWCC1 is located on chromosome 22 and is ubiquitously expressed with highest expression in pancreas, smooth muscle and testis. Expression of ZCWCC1 is upregulated in hypoxia, a pathological condition characterized by an inadequate supply of oxygen in the blood.

**Synonyms:**

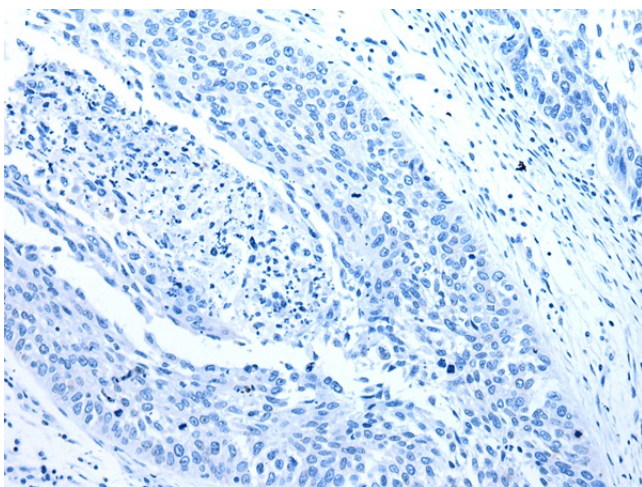
AC004542.C22.1; KIAA0852; ZCW3; ZCWCC1

**Product images:**

Gel: 6%SDS-PAGE  
Lysate: 40 µg  
Lane 1-4: 231  
293T  
Hela and A172 cell lysates  
Primary antibody: [TA369484] (MORC2 Antibody)  
at dilution 1/300  
Secondary antibody: Goat anti rabbit IgG at  
1/8000 dilution  
Exposure time: 20 seconds



Immunohistochemistry of paraffin-embedded  
Human lung cancer tissue using [TA369484]  
(MORC2 Antibody) at dilution 1/25 (Original  
magnification: ×200)



Immunohistochemistry of paraffin-embedded Human lung cancer tissue using [TA369484] (MORC2 Antibody) at dilution 1/25, treated with fusion protein. (Original magnification: ×200)