

## Product datasheet for **TA369477**

### WSB1 Rabbit Polyclonal Antibody

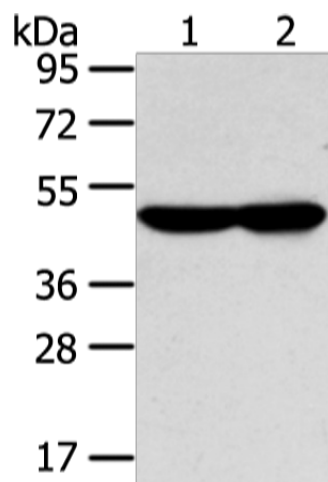
#### Product data:

|                         |  |
|-------------------------|--|
| Product Type:           | Primary Antibodies   |
| Applications:           | WB   |
| Recommended Dilution:   | WB: 500-2000<br>WB positive control: TM4 and NIH/3T3 cell  |
| Reactivity:             | Human, Mouse   |
| Host:                   | Rabbit   |
| Isotype:                | IgG  |
| Clonality:              | Polyclonal   |
| Immunogen:              | Fusion protein of human WSB1   |
| Formulation:            | pH7.4 PBS, 0.05% NaN <sub>3</sub> , 40% Glycerol   |
| Concentration:          | lot specific   |
| Purification:           | Antigen affinity purification  |
| Conjugation:            | Unconjugated   |
| Storage:                | Store at -20°C.  |
| Stability:              | 1 year   |
| Predicted Protein Size: | 47 kDa   |
| Gene Name:              | WD repeat and SOCS box containing 1  |
| Database Link:          | <a href="#">Entrez Gene 26118 Human Q9Y6I7</a>   |
| Background:             | This gene encodes a member of the WD-protein subfamily. This protein shares a high sequence identity to mouse and chick proteins. It contains several WD-repeats spanning most of the protein and an SOCS box in the C-terminus. Alternatively spliced transcript variants encoding distinct isoforms have been found for this gene. |
| Synonyms:               | DKFZp564A122; DKFZp564B0482; SWIP1; WSB-1  |



[View online »](#)

## Product images:



Gel: 8%SDS-PAGE

Lysate: 40  $\mu$ g

Lane 1-2: TM4 and NIH/3T3 cell

Primary antibody: TA369477 (WSB1 Antibody) at dilution 1/350

Secondary antibody: Goat anti rabbit IgG at 1/8000 dilution

Exposure time: 10 seconds