

Product datasheet for **TA369462S**

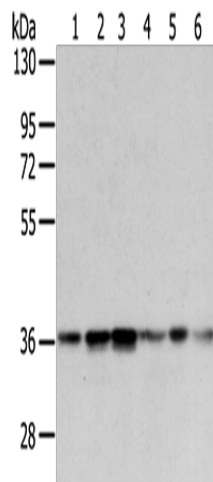
WDR5 Rabbit Polyclonal Antibody

Product data:

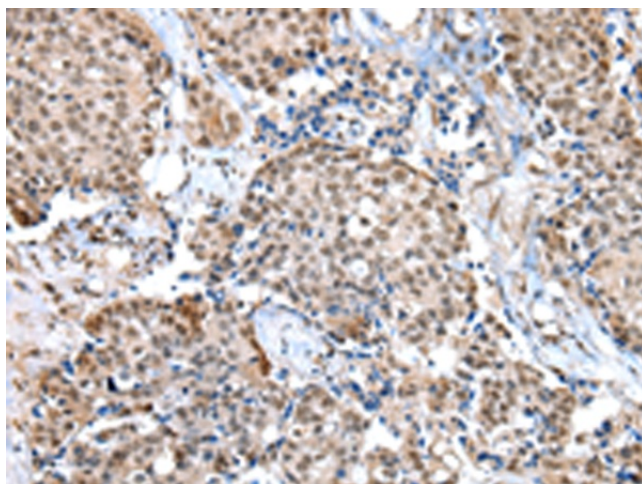
Product Type:	Primary Antibodies
Applications:	IHC, WB
Recommended Dilution:	WB: 500-2000 WB positive control: A375, 231 and PC3 cell, human lung cancer tissue, hela and NIH/3T3 cell IHC: 25-100 Positive control: Human breast cancer Predicted cell location: Nucleus
Reactivity:	Human, Mouse, Rat
Host:	Rabbit
Isotype:	IgG
Clonality:	Polyclonal
Immunogen:	Fusion protein of human WDR5
Formulation:	pH7.4 PBS, 0.05% NaN ₃ , 40% Glycerol
Purification:	Antigen affinity purification
Conjugation:	Unconjugated
Storage:	Store at -20°C.
Stability:	1 year
Predicted Protein Size:	37 kDa
Gene Name:	WD repeat domain 5
Database Link:	Entrez Gene 11091 Human P61964
Background:	This gene encodes a member of the WD repeat protein family. WD repeats are minimally conserved regions of approximately 40 amino acids typically bracketed by gly-his and trp-aspartic acid (GH-WD), which may facilitate formation of heterotrimeric or multiprotein complexes. Members of this family are involved in a variety of cellular processes, including cell cycle progression, signal transduction, apoptosis, and gene regulation. This protein contains 7 WD repeats.
Synonyms:	BIG-3; BIG3; SWD3



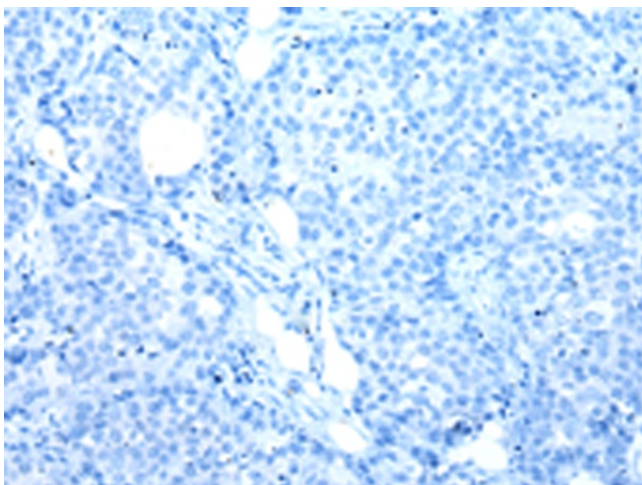
[View online »](#)

Product images:

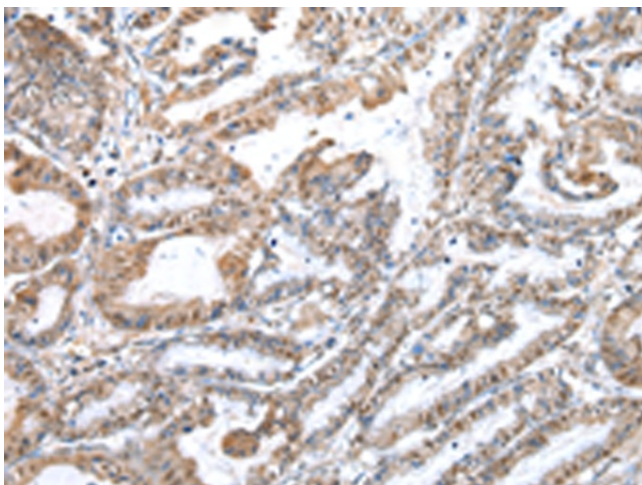
Gel: 8%SDS-PAGE
Lysate: 40 µg
Lane 1-6: A375
231 and PC3 cell
human lung cancer tissue
hela and NIH/3T3 cell
Primary antibody: [TA369462] (WDR5 Antibody) at
dilution 1/300
Secondary antibody: Goat anti rabbit IgG at
1/8000 dilution
Exposure time: 5 seconds



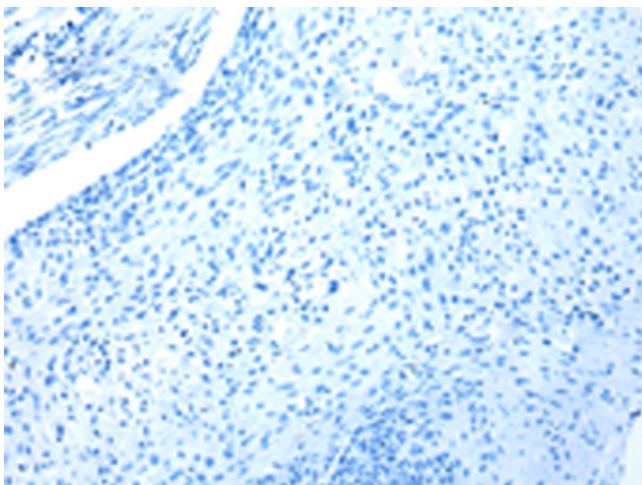
Immunohistochemistry of paraffin-embedded
Human breast cancer tissue using [TA369462]
(WDR5 Antibody) at dilution 1/20 (Original
magnification: ×200)



Immunohistochemistry of paraffin-embedded Human breast cancer tissue using [TA369462] (WDR5 Antibody) at dilution 1/20, treated with fusion protein. (Original magnification: $\times 200$)



Immunohistochemistry of paraffin-embedded Human esophagus cancer tissue using [TA369462] (WDR5 Antibody) at dilution 1/20 (Original magnification: $\times 200$)



Immunohistochemistry of paraffin-embedded Human esophagus cancer tissue using [TA369462] (WDR5 Antibody) at dilution 1/20, treated with fusion protein. (Original magnification: $\times 200$)