

## Product datasheet for **TA369456S**

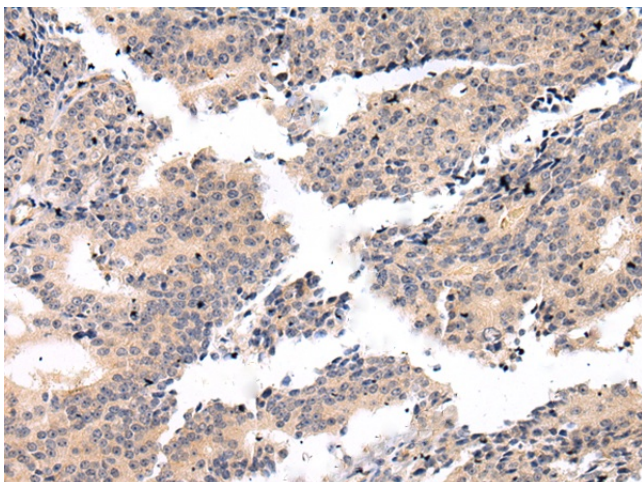
### VSIG8 Rabbit Polyclonal Antibody

#### Product data:

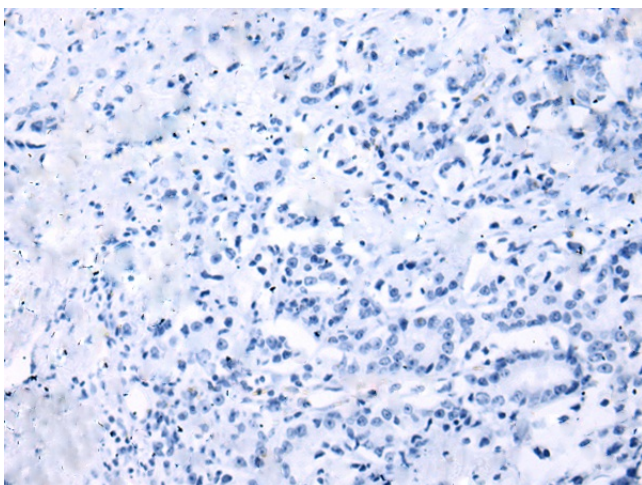
Product Type:	Primary Antibodies
Applications:	IHC
Recommended Dilution:	IHC: 25-100 Positive control: Human prostate cancer Predicted cell location: Cytoplasm
Reactivity:	Human, Mouse
Host:	Rabbit
Isotype:	IgG
Clonality:	Polyclonal
Immunogen:	Fusion protein of human VSIG8
Formulation:	pH7.4 PBS, 0.05% NaN <sub>3</sub> , 40% Glycerol
Purification:	Antigen affinity purification
Conjugation:	Unconjugated
Storage:	Store at -20°C.
Stability:	1 year
Gene Name:	V-set and immunoglobulin domain containing 8
Database Link:	<a href="#">Entrez Gene 391123 Human</a> <a href="#">PODPA2</a>
Background:	VSIG8 contains 2 Ig-like V-type (immunoglobulin-like) domains. VSIG8 is single-pass type I membrane protein. The function of the VSIG8 protein remains unknown.
Synonyms:	Vsig8



[View online »](#)

**Product images:**

Immunohistochemistry of paraffin-embedded Human prostate cancer tissue using [TA369456] (VSIG8 Antibody) at dilution 1/20 (Original magnification:  $\times 200$ )



Immunohistochemistry of paraffin-embedded Human prostate cancer tissue using [TA369456] (VSIG8 Antibody) at dilution 1/20, treated with fusion protein. (Original magnification:  $\times 200$ )