

Product datasheet for **TA369456**

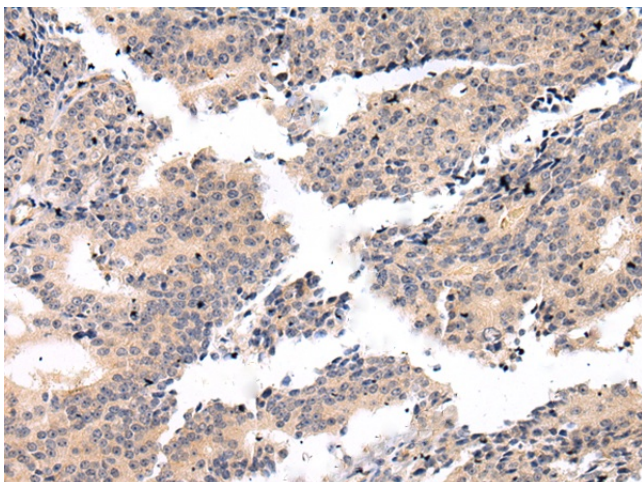
VSIG8 Rabbit Polyclonal Antibody

Product data:

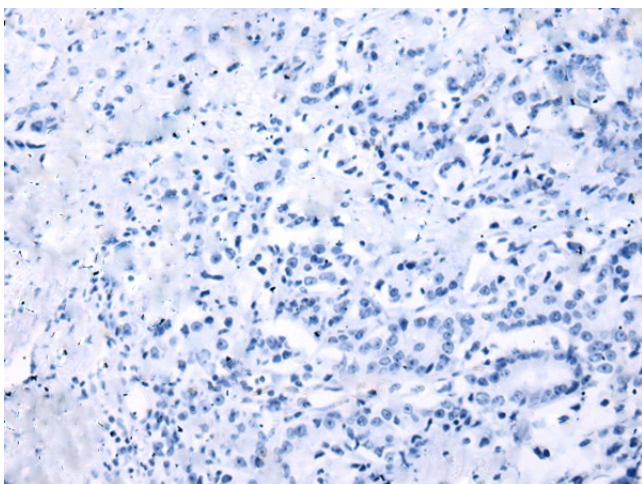
| | |
|-----------------------|---|
| Product Type: | Primary Antibodies |
| Applications: | IHC |
| Recommended Dilution: | IHC: 25-100 Positive control: Human prostate cancer Predicted cell location: Cytoplasm |
| Reactivity: | Human, Mouse |
| Host: | Rabbit |
| Isotype: | IgG |
| Clonality: | Polyclonal |
| Immunogen: | Fusion protein of human VSIG8 |
| Formulation: | pH7.4 PBS, 0.05% NaN ₃ , 40% Glycerol |
| Concentration: | lot specific |
| Purification: | Antigen affinity purification |
| Conjugation: | Unconjugated |
| Storage: | Store at -20°C. |
| Stability: | 1 year |
| Gene Name: | V-set and immunoglobulin domain containing 8 |
| Database Link: | Entrez Gene 391123 Human PODPA2 |
| Background: | VSIG8 contains 2 Ig-like V-type (immunoglobulin-like) domains. VSIG8 is single-pass type I membrane protein. The function of the VSIG8 protein remains unknown. |
| Synonyms: | Vsig8 |



[View online »](#)

Product images:

Immunohistochemistry of paraffin-embedded Human prostate cancer tissue using TA369456 (VSIG8 Antibody) at dilution 1/20 (Original magnification: $\times 200$)



Immunohistochemistry of paraffin-embedded Human prostate cancer tissue using TA369456 (VSIG8 Antibody) at dilution 1/20, treated with fusion protein. (Original magnification: $\times 200$)