

Product datasheet for **TA369451S**

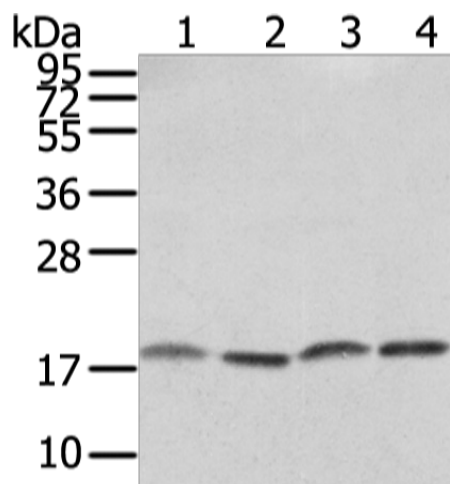
VAMP4 Rabbit Polyclonal Antibody

Product data:

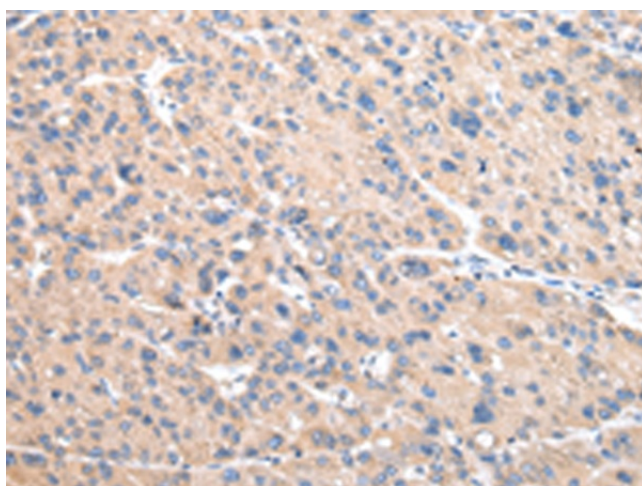
| | |
|-------------------------|--|
| Product Type: | Primary Antibodies |
| Applications: | IHC, WB |
| Recommended Dilution: | WB: 500-2000 WB positive control: PC3, TM4, hela and K562 cell IHC: 25-100 Positive control: Human liver cancer Predicted cell location: Cytoplasm and Cell membrane |
| Reactivity: | Human, Mouse |
| Host: | Rabbit |
| Isotype: | IgG |
| Clonality: | Polyclonal |
| Immunogen: | Full length fusion protein |
| Formulation: | pH7.4 PBS, 0.05% NaN ₃ , 40% Glycerol |
| Purification: | Antigen affinity purification |
| Conjugation: | Unconjugated |
| Storage: | Store at -20°C. |
| Stability: | 1 year |
| Predicted Protein Size: | 16 kDa |
| Gene Name: | vesicle associated membrane protein 4 |
| Database Link: | Entrez Gene 8674 Human O75379 |
| Background: | Synaptobrevins/VAMPs, syntaxins, and the 25-kD synaptosomal-associated protein SNAP25 are the main components of a protein complex involved in the docking and/or fusion of synaptic vesicles with the presynaptic membrane. The protein encoded by this gene is a member of the vesicle-associated membrane protein (VAMP)/synaptobrevin family. This protein may play a role in trans-Golgi network-to-endosome transport. |
| Synonyms: | VAMP-4; VAMP24 |



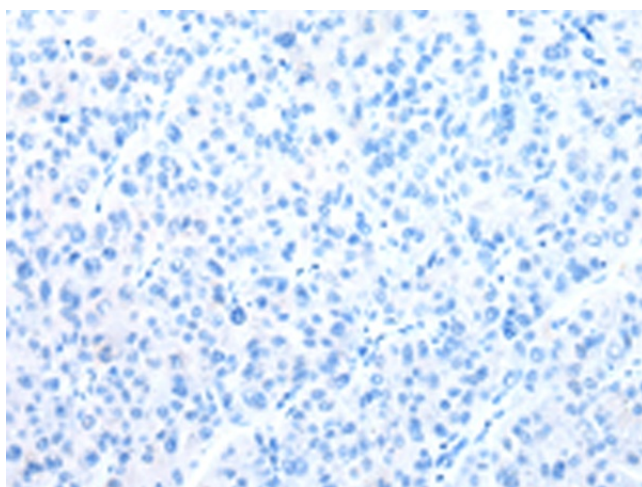
[View online »](#)

Product images:


Gel: 12%SDS-PAGE
 Lysate: 40 µg
 Lane 1-4: PC3
 TM4
 hela and K562 cell
 Primary antibody: [TA369451] (VAMP4 Antibody)
 at dilution 1/650
 Secondary antibody: Goat anti rabbit IgG at
 1/8000 dilution
 Exposure time: 10 seconds



Immunohistochemistry of paraffin-embedded
 Human liver cancer tissue using [TA369451]
 (VAMP4 Antibody) at dilution 1/30 (Original
 magnification: ×200)



Immunohistochemistry of paraffin-embedded
 Human liver cancer tissue using [TA369451]
 (VAMP4 Antibody) at dilution 1/30, treated with
 fusion protein. (Original magnification: ×200)