

Product datasheet for **TA369446**

Ubiquinol Cytochrome C Reductase Core Protein I (UQCRC1) Rabbit Polyclonal Antibody

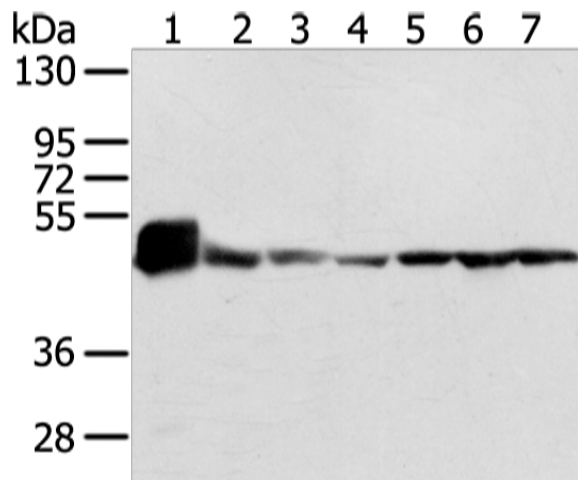
Product data:

Product Type:	Primary Antibodies
Applications:	IHC, WB
Recommended Dilution:	WB: 500-2000 WB positive control: Mouse heart tissue and lo2 cell, 231 cell and human fetal brain tissue, A431, hela and 293T cell IHC: 20-100 Positive control: Human thyroid cancer Predicted cell location: Cytoplasm
Reactivity:	Human, Mouse, Rat
Host:	Rabbit
Isotype:	IgG
Clonality:	Polyclonal
Immunogen:	Fusion protein of human UQCRC1
Formulation:	pH7.4 PBS, 0.05% NaN ₃ , 40% Glycerol
Concentration:	lot specific
Purification:	Antigen affinity purification
Conjugation:	Unconjugated
Storage:	Store at -20°C.
Stability:	1 year
Predicted Protein Size:	53 kDa
Gene Name:	ubiquinol-cytochrome c reductase core protein I
Database Link:	Entrez Gene 7384 Human P31930
Background:	Cytochrome b-c1 complex subunit 1, mitochondrial is a protein that in humans is encoded by the UQCRC1 gene. This is a component of the ubiquinol-cytochrome c reductase complex (complex III or cytochrome b-c1 complex), which is part of the mitochondrial respiratory chain. This protein may mediate formation of the complex between cytochromes c and c1.
Synonyms:	D3S3191; QCR1; UQCR1

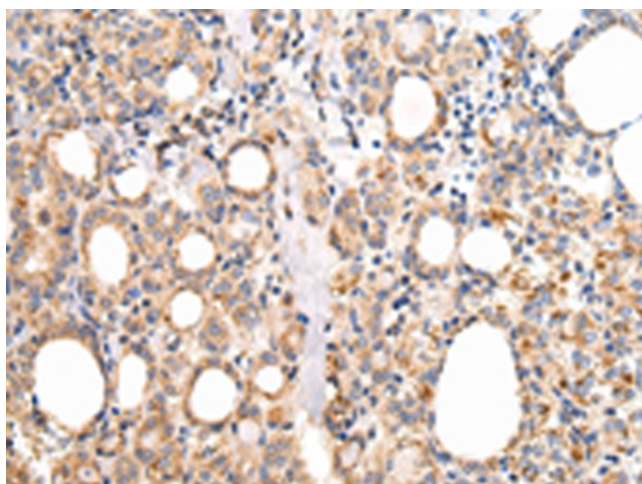


[View online »](#)

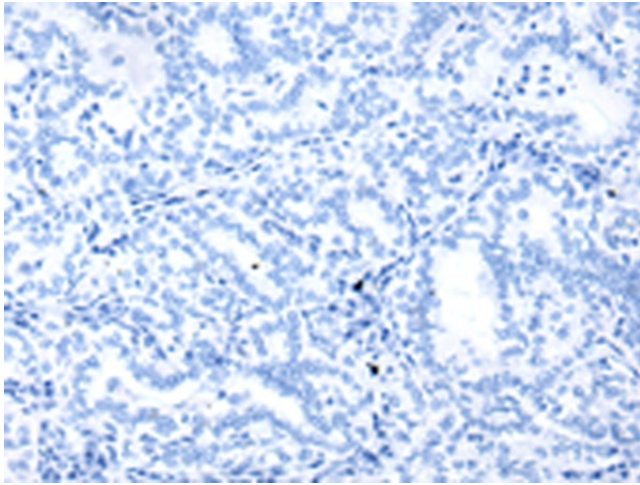
Product images:



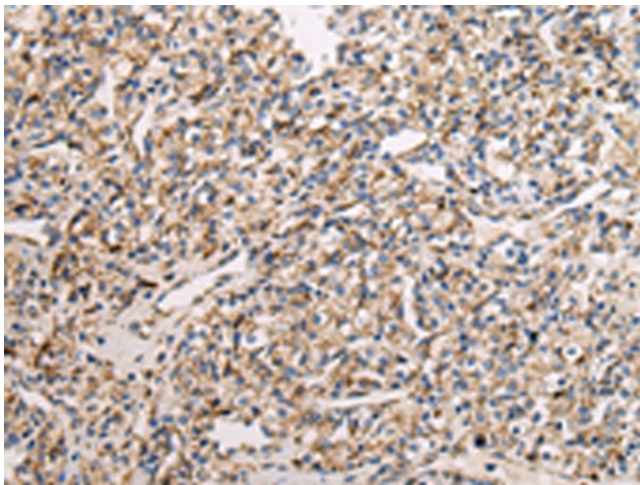
Gel: 8%SDS-PAGE
 Lysate: 40 µg
 Lane 1-7: Mouse heart tissue and lo2 cell
 231 cell and human fetal brain tissue
 A431
 hela and 293T cell
 Primary antibody: TA369446 (UQCRC1 Antibody)
 at dilution 1/200
 Secondary antibody: Goat anti rabbit IgG at
 1/8000 dilution
 Exposure time: 1 second



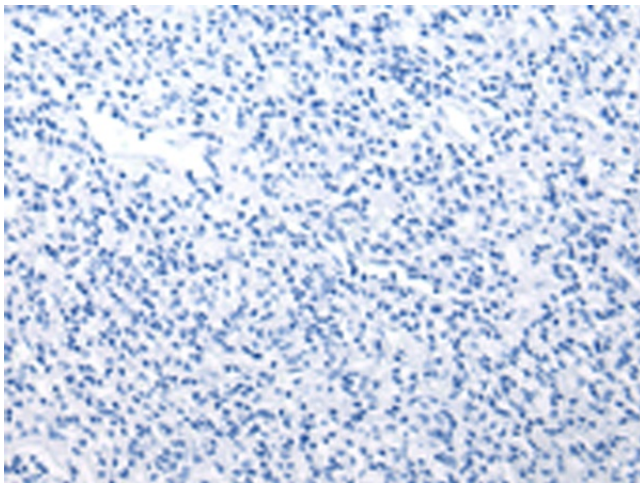
Immunohistochemistry of paraffin-embedded
 Human thyroid cancer tissue using TA369446
 (UQCRC1 Antibody) at dilution 1/20 (Original
 magnification: ×200)



Immunohistochemistry of paraffin-embedded Human thyroid cancer tissue using TA369446 (UQCRC1 Antibody) at dilution 1/20, treated with fusion protein. (Original magnification: ×200)



Immunohistochemistry of paraffin-embedded Human prostate cancer tissue using TA369446 (UQCRC1 Antibody) at dilution 1/20 (Original magnification: ×200)



Immunohistochemistry of paraffin-embedded Human prostate cancer tissue using TA369446 (UQCRC1 Antibody) at dilution 1/20, treated with fusion protein. (Original magnification: ×200)