

Product datasheet for **TA369444S**

Pyruvate Dehydrogenase E2 (DLAT) Rabbit Polyclonal Antibody

Product data:

Product Type:	Primary Antibodies
Applications:	IHC, WB
Recommended Dilution:	WB: 500-2000 WB positive control: A431, hepg2 and Incap cell IHC: 30-150 Positive control: Human breast cancer Predicted cell location: Cytoplasm
Reactivity:	Human, Mouse, Rat
Host:	Rabbit
Isotype:	IgG
Clonality:	Polyclonal
Immunogen:	Fusion protein of human DLAT
Formulation:	pH7.4 PBS, 0.05% NaN ₃ , 40% Glycerol
Purification:	Antigen affinity purification
Conjugation:	Unconjugated
Storage:	Store at -20°C.
Stability:	1 year
Predicted Protein Size:	69 kDa
Gene Name:	dihydrolipoamide S-acetyltransferase
Database Link:	Entrez Gene 1737 Human P10515



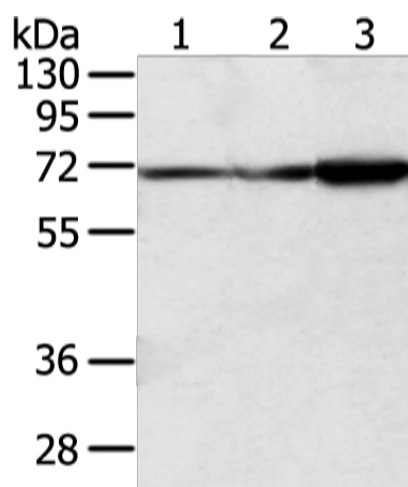
[View online »](#)

Background:

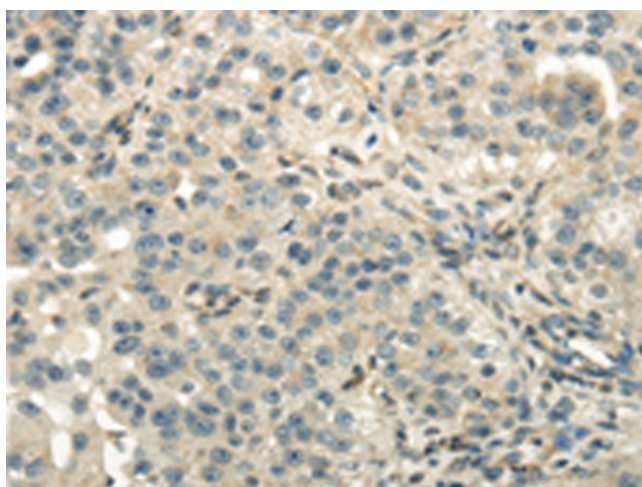
This gene encodes component E2 of the multi-enzyme pyruvate dehydrogenase complex (PDC). PDC resides in the inner mitochondrial membrane and catalyzes the conversion of pyruvate to acetyl coenzyme A. The protein product of this gene, dihydrolipoamide acetyltransferase, accepts acetyl groups formed by the oxidative decarboxylation of pyruvate and transfers them to coenzyme A. Dihydrolipoamide acetyltransferase is the antigen for antimitochondrial antibodies. These autoantibodies are present in nearly 95% of patients with the autoimmune liver disease primary biliary cirrhosis (PBC). In PBC, activated T lymphocytes attack and destroy epithelial cells in the bile duct where this protein is abnormally distributed and overexpressed. PBC eventually leads to cirrhosis and liver failure. Mutations in this gene are also a cause of pyruvate dehydrogenase E2 deficiency which causes primary lactic acidosis in infancy and early childhood.

Synonyms:

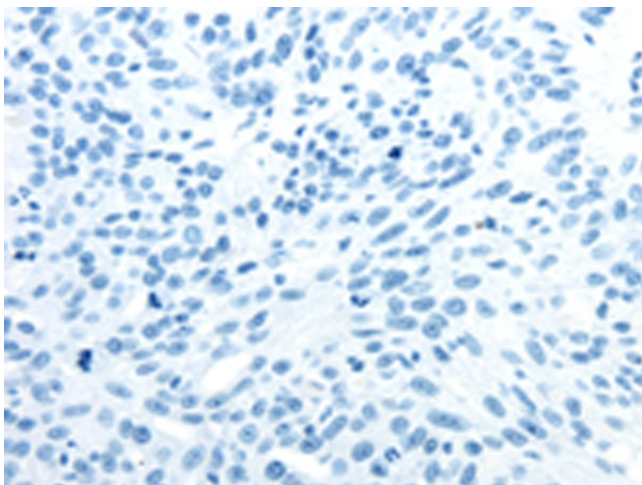
DLTA; E2; PBC; PDC-E2; PDCE2

Product images:

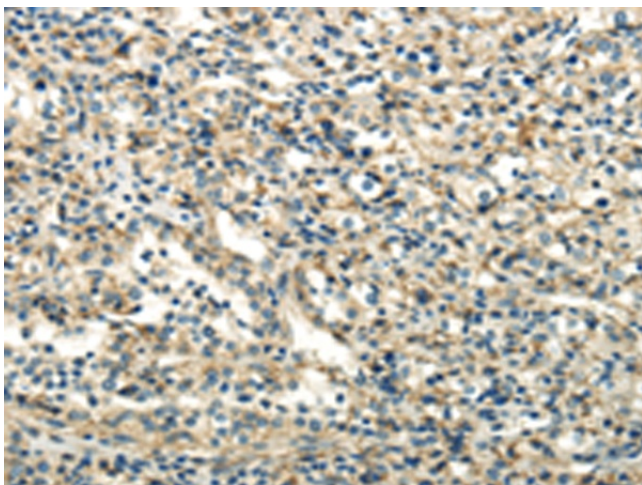
Gel: 8%SDS-PAGE
Lysate: 40 μ g
Lane 1-3: A431
hepg2 and Incap cell
Primary antibody: [TA369444] (DLAT Antibody) at
dilution 1/800
Secondary antibody: Goat anti rabbit IgG at
1/8000 dilution
Exposure time: 3 seconds



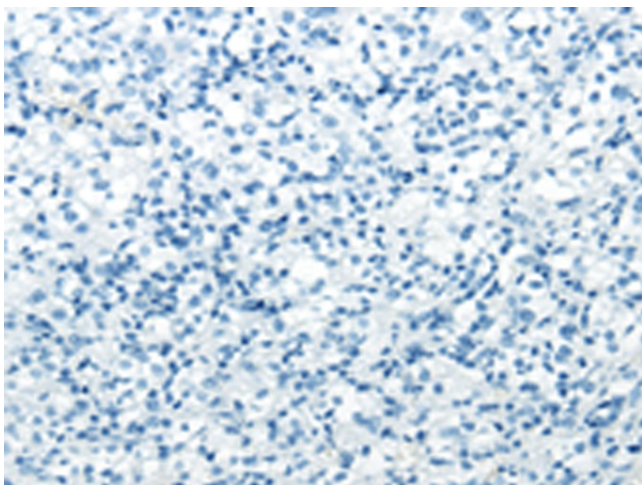
Immunohistochemistry of paraffin-embedded
Human breast cancer tissue using [TA369444]
(DLAT Antibody) at dilution 1/40 (Original
magnification: \times 200)



Immunohistochemistry of paraffin-embedded Human breast cancer tissue using [TA369444] (DLAT Antibody) at dilution 1/40, treated with fusion protein. (Original magnification: $\times 200$)



Immunohistochemistry of paraffin-embedded Human prostate cancer tissue using [TA369444] (DLAT Antibody) at dilution 1/40 (Original magnification: $\times 200$)



Immunohistochemistry of paraffin-embedded Human prostate cancer tissue using [TA369444] (DLAT Antibody) at dilution 1/40, treated with fusion protein. (Original magnification: $\times 200$)