

Product datasheet for **TA369435S**

UBL7 Rabbit Polyclonal Antibody

Product data:

Product Type:	Primary Antibodies
Applications:	IHC, WB
Recommended Dilution:	WB: 500-2000 WB positive control: Mouse testis tissue, Hela cell lysates IHC: 100-200 Positive control: Human liver cancer Predicted cell location: Cytoplasm
Reactivity:	Human, Mouse
Host:	Rabbit
Isotype:	IgG
Clonality:	Polyclonal
Immunogen:	Fusion protein of human UBL7
Formulation:	pH7.4 PBS, 0.05% NaN ₃ , 40% Glycerol
Purification:	Antigen affinity purification
Conjugation:	Unconjugated
Storage:	Store at -20°C.
Stability:	1 year
Predicted Protein Size:	41 kDa
Gene Name:	ubiquitin like 7
Database Link:	Entrez Gene 84993 Human Q96S82



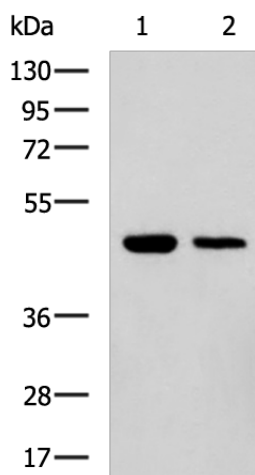
[View online »](#)

Background:

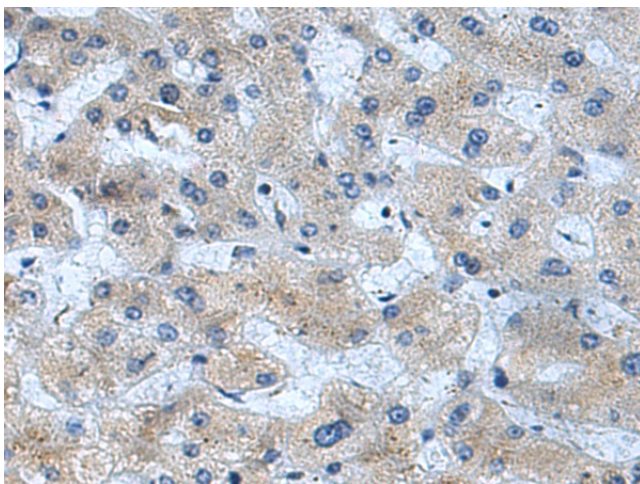
Ubiquitin is an important cellular signal that targets proteins for degradation or regulates their functions. UBL7 (ORF name SB132) encodes ubiquitin-like protein7 also named bone marrow stromal cell ubiquitin-like protein (BMSC-UbP) capable of binding ubiquitin. BMSC-UbP protein is derived from bone marrow stromal cells containing a ubiquitin-associated (UBA) domain at the C terminus that has been implicated in linking cellular processes and the ubiquitin system. BMSC-UbP mRNA is widely expressed in human multiple tissues and various tumor cell lines and is decreased in BMSC stimulated with phorbol myristate acetate (PMA) suggesting a role in regulation of BMSC function.

Synonyms:

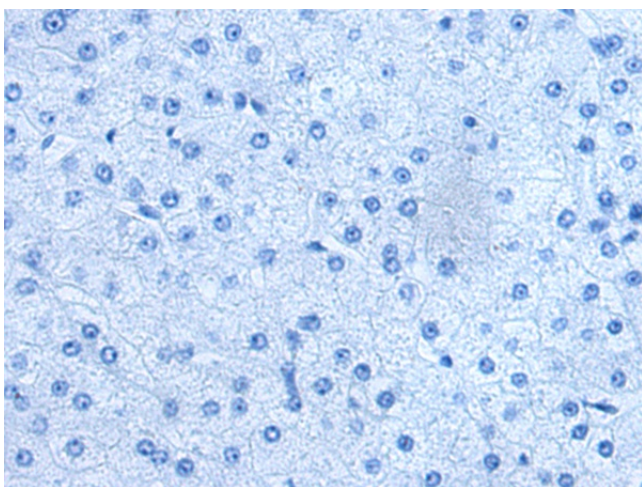
BMSC-UbP; BMSCUBP; MGC14421; TCBA1

Product images:

Gel: 8%SDS-PAGE
Lysate: 40 μ g
Lane 1-2: Mouse testis tissue
HeLa cell lysates
Primary antibody: [TA369435] (UBL7 Antibody) at dilution 1/700
Secondary antibody: Goat anti rabbit IgG at 1/5000 dilution
Exposure time: 1 minute



Immunohistochemistry of paraffin-embedded Human liver cancer tissue using [TA369435] (UBL7 Antibody) at dilution 1/100 (Original magnification: \times 200)



Immunohistochemistry of paraffin-embedded Human liver cancer tissue using [TA369435] (UBL7 Antibody) at dilution 1/100, treated with fusion protein. (Original magnification: ×200)