

## Product datasheet for **TA369428**

### **DNAJB11 Rabbit Polyclonal Antibody**

#### **Product data:**

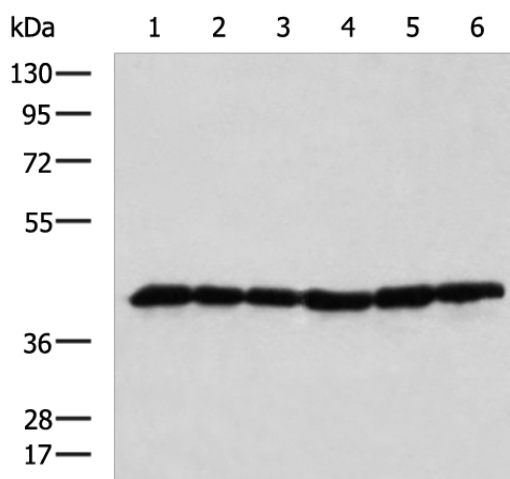
<b>Product Type:</b>	Primary Antibodies
<b>Applications:</b>	IHC, WB
<b>Recommended Dilution:</b>	WB: 1000-5000 WB positive control: NIH/3T3, K562, HT-29, 231, HUVEC and Hela cell lysates IHC: 150-300 Positive control: Human esophagus cancer Predicted cell location: Cytoplasm
<b>Reactivity:</b>	Human, Mouse, Rat
<b>Host:</b>	Rabbit
<b>Isotype:</b>	IgG
<b>Clonality:</b>	Polyclonal
<b>Immunogen:</b>	Fusion protein of human DNAJB11
<b>Formulation:</b>	pH7.4 PBS, 0.05% NaN <sub>3</sub> , 40% Glycerol
<b>Concentration:</b>	lot specific
<b>Purification:</b>	Antigen affinity purification
<b>Conjugation:</b>	Unconjugated
<b>Storage:</b>	Store at -20°C.
<b>Stability:</b>	1 year
<b>Predicted Protein Size:</b>	40 kDa
<b>Gene Name:</b>	DnaJ heat shock protein family (Hsp40) member B11
<b>Database Link:</b>	<a href="#">Entrez Gene 51726 Human Q9UBS4</a>
<b>Background:</b>	This gene encodes a soluble glycoprotein of the endoplasmic reticulum (ER) lumen that functions as a co-chaperone of binding immunoglobulin protein, a 70 kilodalton heat shock protein chaperone required for the proper folding and assembly of proteins in the ER. The encoded protein contains a highly conserved J domain of about 70 amino acids with a characteristic His-Pro-Asp (HPD) motif and may regulate the activity of binding immunoglobulin protein by stimulating ATPase activity.



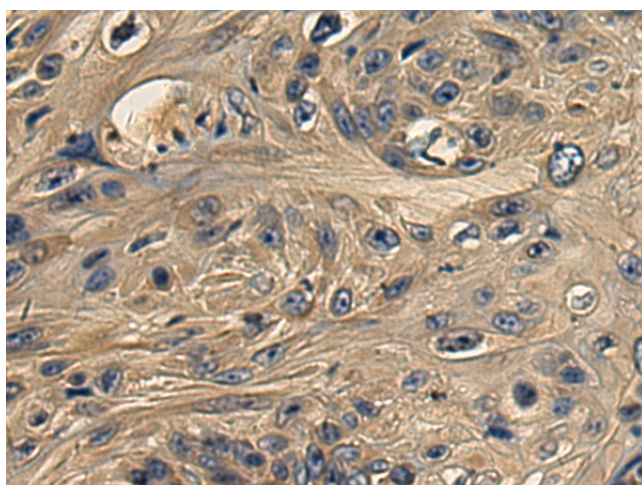
[View online »](#)

**Synonyms:** ABBP-2; ABBP2; DJ9; EDJ; ERdj3; ERj3; ERj3p; hDj9; HEDJ; OTTHUMP00000210171; PRO1080; UNQ537

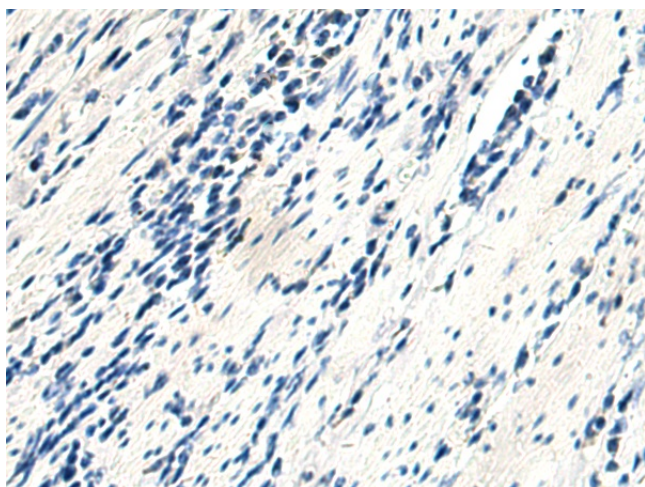
**Product images:**



Gel: 8%SDS-PAGE  
 Lysate: 40 µg  
 Lane 1-6: NIH/3T3  
 K562  
 HT-29  
 231  
 HUVEC and Hela cell lysates  
 Primary antibody: TA369428 (DNAJB11 Antibody)  
 at dilution 1/1000  
 Secondary antibody: Goat anti rabbit IgG at  
 1/5000 dilution  
 Exposure time: 15 seconds



Immunohistochemistry of paraffin-embedded  
 Human esophagus cancer tissue using TA369428  
 (DNAJB11 Antibody) at dilution 1/180 (Original  
 magnification: ×200)



Immunohistochemistry of paraffin-embedded Human esophagus cancer tissue using TA369428 (DNAJB11 Antibody) at dilution 1/180, treated with fusion protein. (Original magnification:  $\times 200$ )