

## Product datasheet for **TA369427**

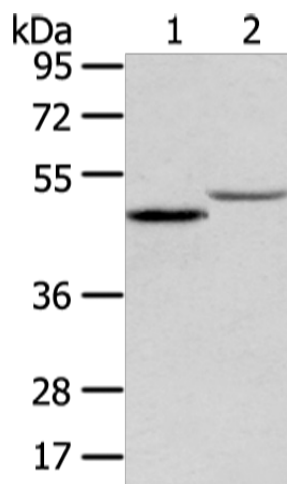
### TTC23 Rabbit Polyclonal Antibody

#### Product data:

Product Type:	Primary Antibodies
Applications:	IHC, WB
Recommended Dilution:	WB: 500-2000 WB positive control: Mouse adrenal gland and kidney tissue IHC: 25-100 Positive control: Human breast cancer Predicted cell location: Cytoplasm
Reactivity:	Human, Mouse
Host:	Rabbit
Isotype:	IgG
Clonality:	Polyclonal
Immunogen:	Fusion protein of human TTC23
Formulation:	pH7.4 PBS, 0.05% NaN <sub>3</sub> , 40% Glycerol
Concentration:	lot specific
Purification:	Antigen affinity purification
Conjugation:	Unconjugated
Storage:	Store at -20°C.
Stability:	1 year
Predicted Protein Size:	50 kDa
Gene Name:	tetratricopeptide repeat domain 23
Database Link:	<a href="#">Entrez Gene 64927 Human Q5W5X9</a>
Background:	The tetratricopeptide repeat (TPR) is a structural motif. It consists in a degenerate 34 amino acid sequence motif identified in a wide variety of proteins. It is found in tandem arrays of 3–16 motifs,[1] which form scaffolds to mediate protein–protein interactions and often the assembly of multiprotein complexes. These repeats usually fold together to produce a single, linearsolenoid domain called TPR domain.
Synonyms:	FLJ12572; FLJ12939; HCC-8; OTTHUMP00000190851



[View online »](#)

**Product images:**

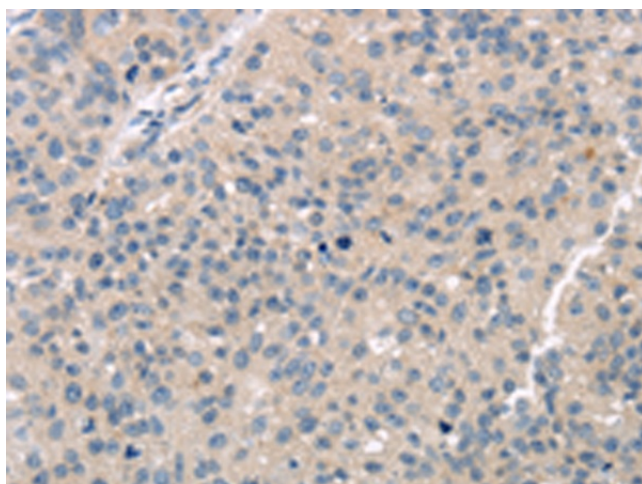
Gel: 8%SDS-PAGE

Lysate: 40  $\mu$ g

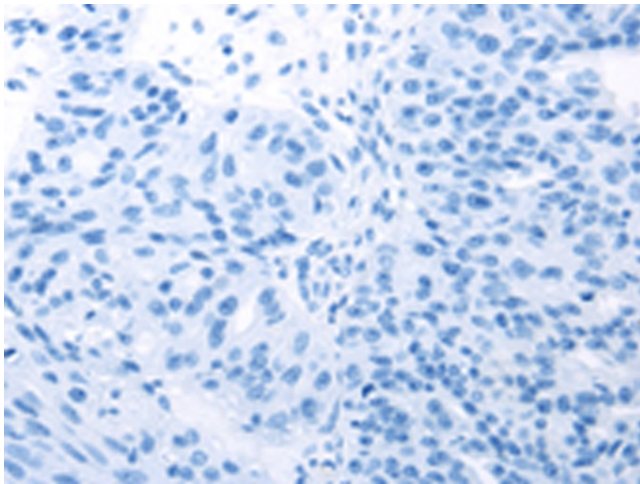
Lane 1-2: Mouse adrenal gland and kidney tissue  
Primary antibody: TA369427 (TTC23 Antibody) at dilution 1/400

Secondary antibody: Goat anti rabbit IgG at 1/8000 dilution

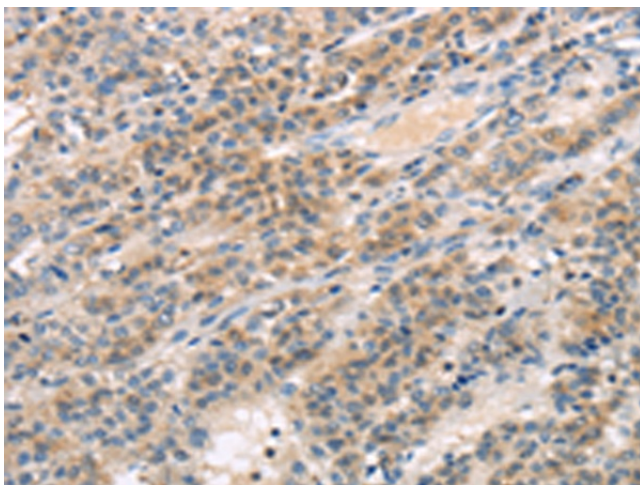
Exposure time: 20 seconds



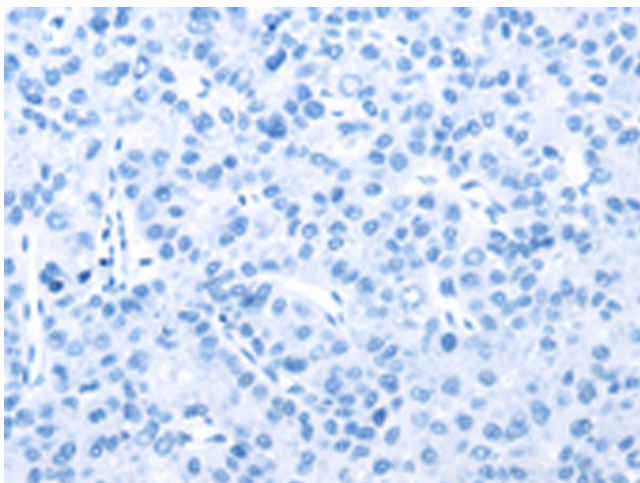
Immunohistochemistry of paraffin-embedded Human breast cancer tissue using TA369427 (TTC23 Antibody) at dilution 1/30 (Original magnification:  $\times$ 200)



Immunohistochemistry of paraffin-embedded Human breast cancer tissue using TA369427 (TTC23 Antibody) at dilution 1/30, treated with fusion protein. (Original magnification: ×200)



Immunohistochemistry of paraffin-embedded Human liver cancer tissue using TA369427 (TTC23 Antibody) at dilution 1/30 (Original magnification: ×200)



Immunohistochemistry of paraffin-embedded Human liver cancer tissue using TA369427 (TTC23 Antibody) at dilution 1/30, treated with fusion protein. (Original magnification: ×200)