

Product datasheet for **TA369426S**

TRPC4AP Rabbit Polyclonal Antibody

Product data:

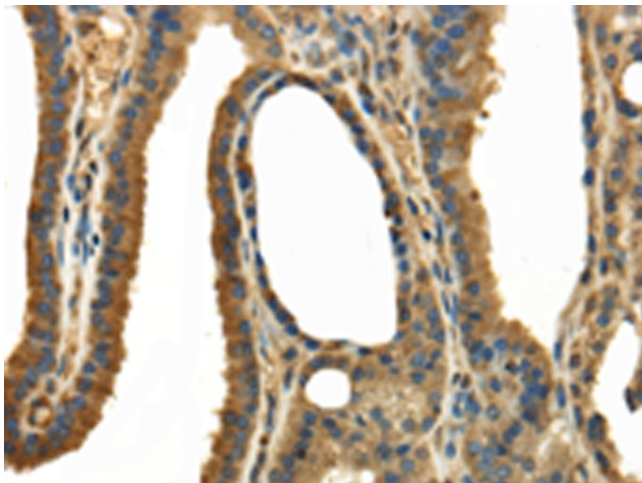
Product Type:	Primary Antibodies
Applications:	IHC
Recommended Dilution:	IHC: 25-100 Positive control: Human thyroid cancer Predicted cell location: Cytoplasm and Cell membrane
Reactivity:	Human, Mouse
Host:	Rabbit
Isotype:	IgG
Clonality:	Polyclonal
Immunogen:	Fusion protein of human TRPC4AP
Formulation:	pH7.4 PBS, 0.05% NaN ₃ , 40% Glycerol
Purification:	Antigen affinity purification
Conjugation:	Unconjugated
Storage:	Store at -20°C.
Stability:	1 year
Gene Name:	transient receptor potential cation channel subfamily C member 4 associated protein
Database Link:	Entrez Gene 26133 Human Q8TEL6
Background:	TRPC4AP (transient receptor potential cation channel, subfamily C, member 4 associated protein), also known as TRUSS or TRRP4AP, is a 797 amino acid protein that is expressed in a variety of tissues, with highest expression in liver, heart, testis and brain. Thought to function as a scaffolding protein, TRPC4AP interacts with TNF-R1 and may both link TNF-R1 to the IKK signalsome complex, and participate in the activation of NFκB p50, an event that occurs in response to TNF-R1 ligation. TRPC4AP exists as multiple alternatively spliced isoforms that are encoded by a gene which maps to human chromosome 20. Comprising approximately 2% of the human genome, chromosome 20 contains nearly 63 million bases that encode over 600 genes, some of which are associated with Creutzfeldt-Jakob disease, amyotrophic lateral sclerosis, spinal muscular atrophy, ring chromosome 20 epilepsy syndrome and Alagille syndrome.



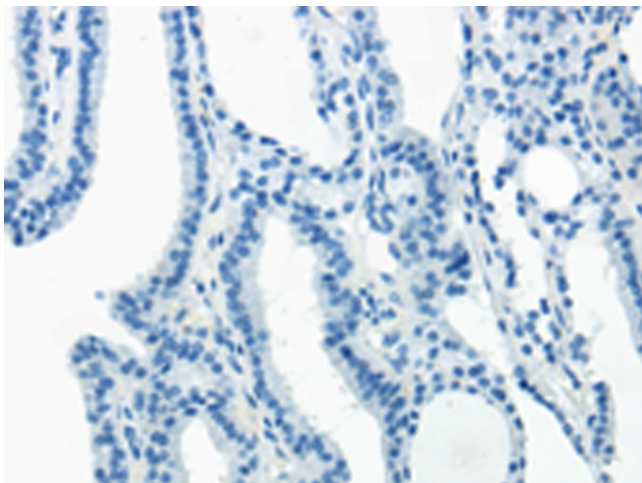
[View online »](#)

Synonyms: C20orf188; dj756N5.2; DKFZp586C1223; DKFZP727M231; TRRP4AP; TRUSS

Product images:



Immunohistochemistry of paraffin-embedded Human thyroid cancer tissue using [TA369426] (TRPC4AP Antibody) at dilution 1/30 (Original magnification: $\times 200$)



Immunohistochemistry of paraffin-embedded Human thyroid cancer tissue using [TA369426] (TRPC4AP Antibody) at dilution 1/30, treated with fusion protein. (Original magnification: $\times 200$)