

Product datasheet for **TA369424**

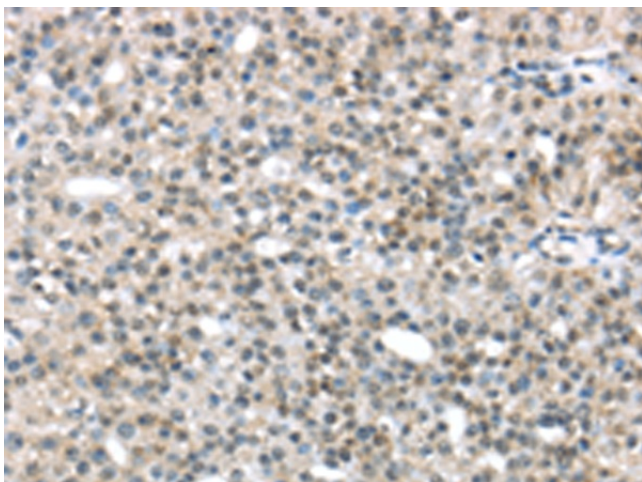
TRIP6 Rabbit Polyclonal Antibody

Product data:

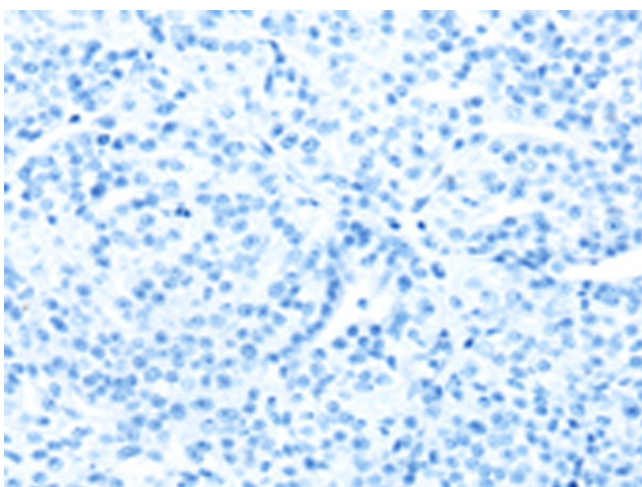
Product Type:	Primary Antibodies
Applications:	IHC
Recommended Dilution:	IHC: 30-150 Positive control: Human breast cancer Predicted cell location: Nucleus and Cytoplasm
Reactivity:	Human, Mouse
Host:	Rabbit
Isotype:	IgG
Clonality:	Polyclonal
Immunogen:	Fusion protein of human TRIP6
Formulation:	pH7.4 PBS, 0.05% NaN ₃ , 40% Glycerol
Concentration:	lot specific
Purification:	Antigen affinity purification
Conjugation:	Unconjugated
Storage:	Store at -20°C.
Stability:	1 year
Gene Name:	thyroid hormone receptor interactor 6
Database Link:	Entrez Gene 7205 Human Q15654
Background:	This gene is a member of the zyxin family and encodes a protein with three LIM zinc-binding domains. This protein localizes to focal adhesion sites and along actin stress fibers. Recruitment of this protein to the plasma membrane occurs in a lysophosphatidic acid (LPA)-dependent manner and it regulates LPA-induced cell migration. Alternatively spliced variants which encode different protein isoforms have been described; however, not all variants have been fully characterized.
Synonyms:	MGC3837; MGC4423; MGC10556; MGC10558; MGC29959; OIP1; TRIP-6; ZRP-1



[View online »](#)

Product images:

Immunohistochemistry of paraffin-embedded Human breast cancer tissue using TA369424 (TRIP6 Antibody) at dilution 1/45 (Original magnification: $\times 200$)



Immunohistochemistry of paraffin-embedded Human breast cancer tissue using TA369424 (TRIP6 Antibody) at dilution 1/45, treated with fusion protein. (Original magnification: $\times 200$)