

Product datasheet for **TA369421**

MED6 Rabbit Polyclonal Antibody

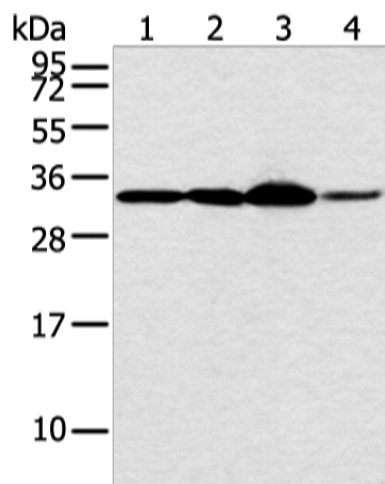
Product data:

Product Type:	Primary Antibodies
Applications:	IHC, WB
Recommended Dilution:	WB: 500-2000 WB positive control: Hela and PC3 cell, 231 cell and human esophagus cancer tissue IHC: 25-100 Positive control: Human brain Predicted cell location: Nucleus
Reactivity:	Human, Mouse
Host:	Rabbit
Isotype:	IgG
Clonality:	Polyclonal
Immunogen:	Full length fusion protein
Formulation:	pH7.4 PBS, 0.05% NaN ₃ , 40% Glycerol
Concentration:	lot specific
Purification:	Antigen affinity purification
Conjugation:	Unconjugated
Storage:	Store at -20°C.
Stability:	1 year
Predicted Protein Size:	28 kDa
Gene Name:	mediator complex subunit 6
Database Link:	Entrez Gene 10001 Human O75586
Background:	Mediator of RNA polymerase II transcription subunit 6 is one of the subunits of the Mediator complex. It is an enzyme that in humans is encoded by the MED6 gene. Component of the Mediator complex, a coactivator involved in the regulated transcription of nearly all RNA polymerase II-dependent genes. Mediator functions as a bridge to convey information from gene-specific regulatory proteins to the basal RNA polymerase II transcription machinery.
Synonyms:	ARC33; hMed6; NY-REN-28

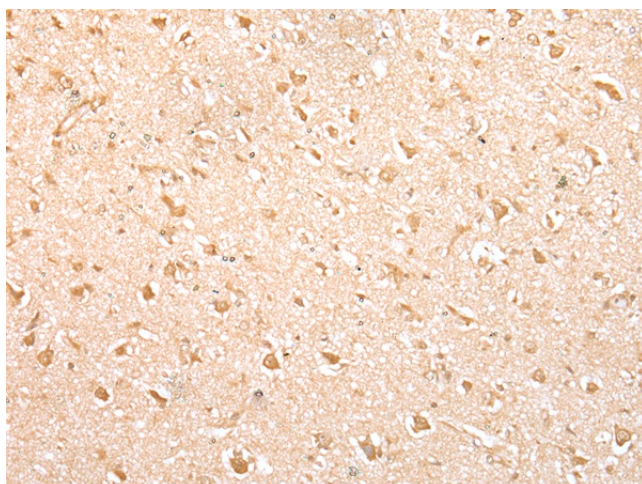


[View online »](#)

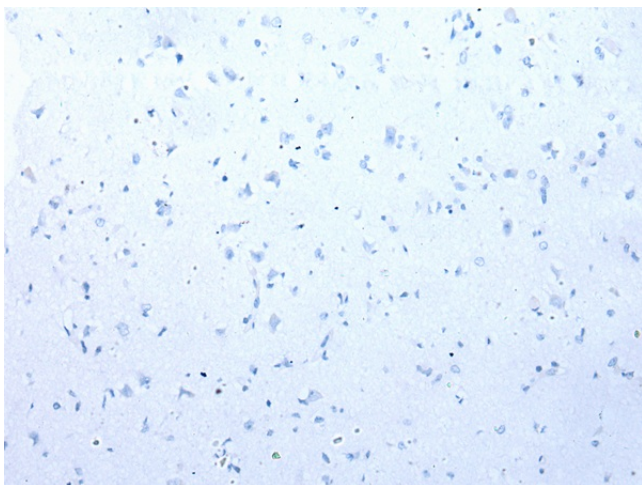
Product images:



Gel: 12%SDS-PAGE
Lysate: 40 μ g
Lane 1-4: HeLa and PC3 cell
231 cell and human esophagus cancer tissue
Primary antibody: TA369421 (MED6 Antibody) at
dilution 1/400
Secondary antibody: Goat anti rabbit IgG at
1/8000 dilution
Exposure time: 5 seconds



Immunohistochemistry of paraffin-embedded
Human brain tissue using TA369421 (MED6
Antibody) at dilution 1/30 (Original magnification:
 \times 200)



Immunohistochemistry of paraffin-embedded Human brain tissue using TA369421 (MED6 Antibody) at dilution 1/30, treated with fusion protein. (Original magnification: $\times 200$)