

## Product datasheet for **TA369413S**

### TMED4 Rabbit Polyclonal Antibody

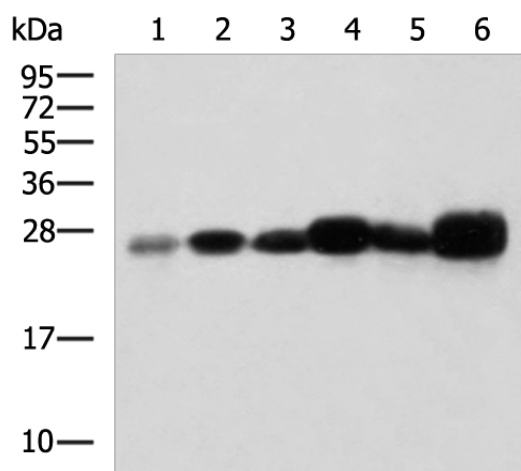
#### Product data:

Product Type:	Primary Antibodies
Applications:	IHC, WB
Recommended Dilution:	WB: 1000-5000 WB positive control: Human liver tissue, Mouse liver tissue, Mouse small intestines tissue, Hela cell, K562 cell, HepG2 cell lysates IHC: 200-400 Positive control: Human liver cancer Predicted cell location: Cytoplasm
Reactivity:	Human, Mouse
Host:	Rabbit
Isotype:	IgG
Clonality:	Polyclonal
Immunogen:	Fusion protein of human TMED4
Formulation:	pH7.4 PBS, 0.05% NaN <sub>3</sub> , 40% Glycerol
Purification:	Antigen affinity purification
Conjugation:	Unconjugated
Storage:	Store at -20°C.
Stability:	1 year
Predicted Protein Size:	26 kDa
Gene Name:	transmembrane p24 trafficking protein 4
Database Link:	<a href="#">Entrez Gene 222068 Human Q7Z7H5</a>
Background:	Involved in vesicular protein trafficking, mainly in the early secretory pathway. targeting. Involved in the maintenance of the Golgi apparatus. Appears to play a role in the biosynthesis of secreted cargo including processing. Involved in endoplasmic reticulum stress response. May play a role in the regulation of heat-shock response and apoptosis (By similarity).
Synonyms:	ERS25; HNFLF



[View online »](#)

## Product images:



Gel: 12%SDS-PAGE

Lysate: 40  $\mu$ g

Lane 1-6: Human liver tissue

Mouse liver tissue

Mouse small intestines tissue

Hela cell

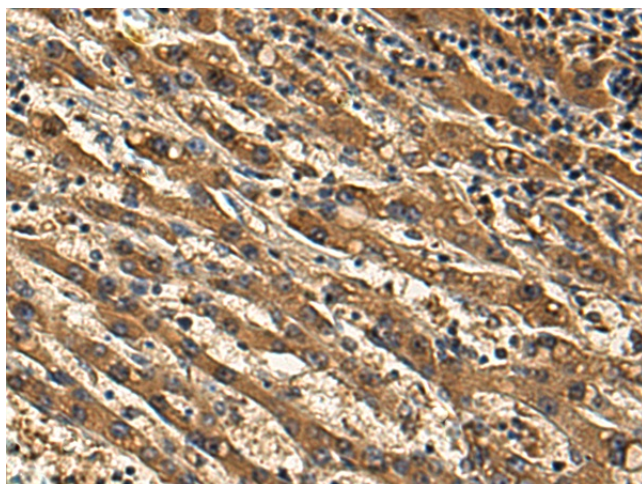
K562 cell

HepG2 cell lysates

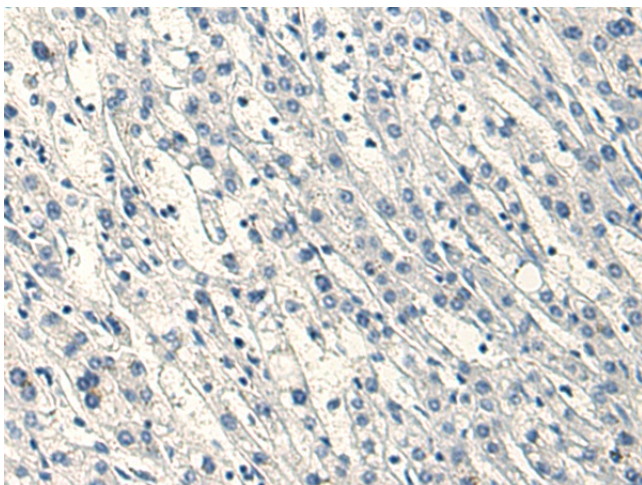
Primary antibody: [TA369413] (TMED4 Antibody)  
at dilution 1/1000

Secondary antibody: Goat anti rabbit IgG at  
1/5000 dilution

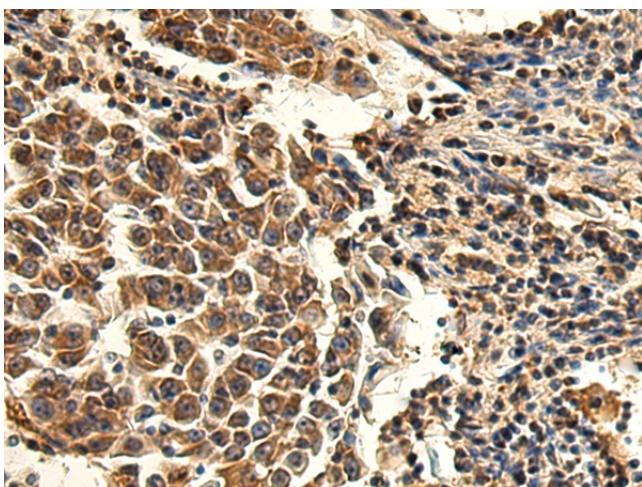
Exposure time: 1 minute



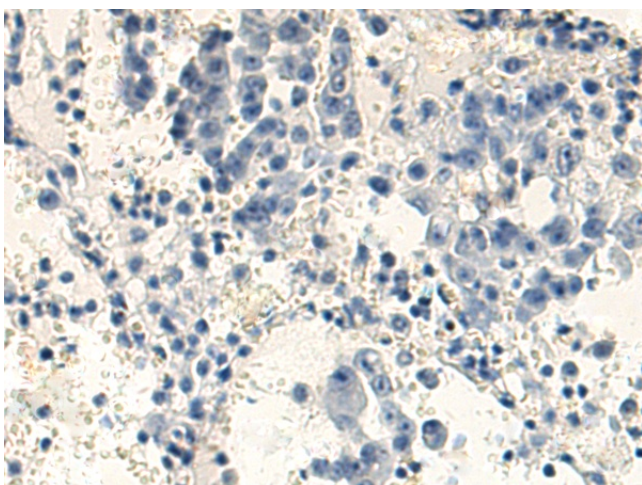
Immunohistochemistry of paraffin-embedded  
Human liver cancer tissue using [TA369413]  
(TMED4 Antibody) at dilution 1/180 (Original  
magnification:  $\times$ 200)



Immunohistochemistry of paraffin-embedded Human liver cancer tissue using [TA369413] (TMED4 Antibody) at dilution 1/180, treated with fusion protein. (Original magnification:  $\times 200$ )



Immunohistochemistry of paraffin-embedded Human lung cancer tissue using [TA369413] (TMED4 Antibody) at dilution 1/180 (Original magnification:  $\times 200$ )



Immunohistochemistry of paraffin-embedded Human lung cancer tissue using [TA369413] (TMED4 Antibody) at dilution 1/180, treated with fusion protein. (Original magnification:  $\times 200$ )