

Product datasheet for **TA369413**

TMED4 Rabbit Polyclonal Antibody

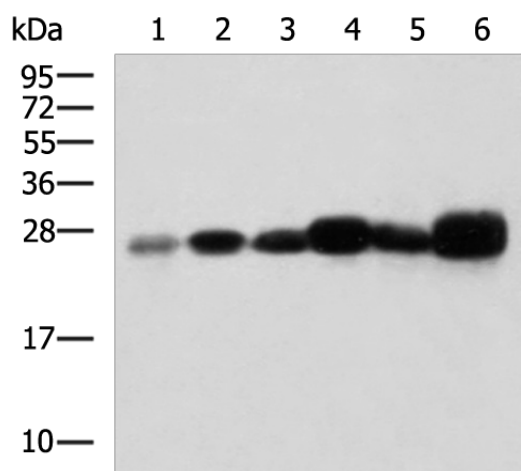
Product data:

Product Type:	Primary Antibodies
Applications:	IHC, WB
Recommended Dilution:	WB: 1000-5000 WB positive control: Human liver tissue, Mouse liver tissue, Mouse small intestines tissue, Hela cell, K562 cell, HepG2 cell lysates IHC: 200-400 Positive control: Human liver cancer Predicted cell location: Cytoplasm
Reactivity:	Human, Mouse
Host:	Rabbit
Isotype:	IgG
Clonality:	Polyclonal
Immunogen:	Fusion protein of human TMED4
Formulation:	pH7.4 PBS, 0.05% NaN ₃ , 40% Glycerol
Concentration:	lot specific
Purification:	Antigen affinity purification
Conjugation:	Unconjugated
Storage:	Store at -20°C.
Stability:	1 year
Predicted Protein Size:	26 kDa
Gene Name:	transmembrane p24 trafficking protein 4
Database Link:	Entrez Gene 222068 Human Q7Z7H5
Background:	Involved in vesicular protein trafficking, mainly in the early secretory pathway. targeting. Involved in the maintenance of the Golgi apparatus. Appears to play a role in the biosynthesis of secreted cargo including processing. Involved in endoplasmic reticulum stress response. May play a role in the regulation of heat-shock response and apoptosis (By similarity).
Synonyms:	ERS25; HNFLF

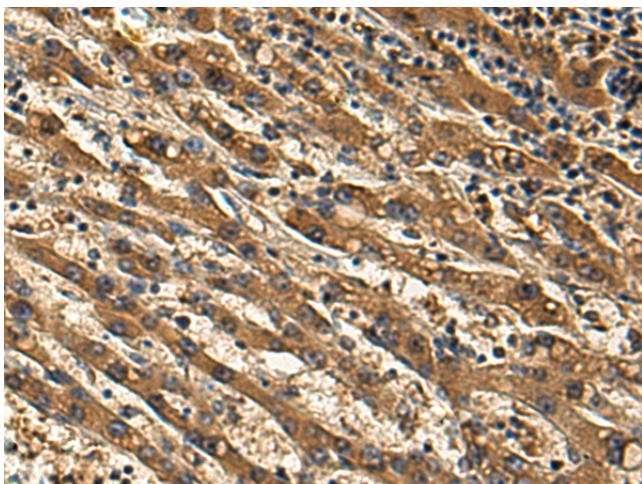


[View online »](#)

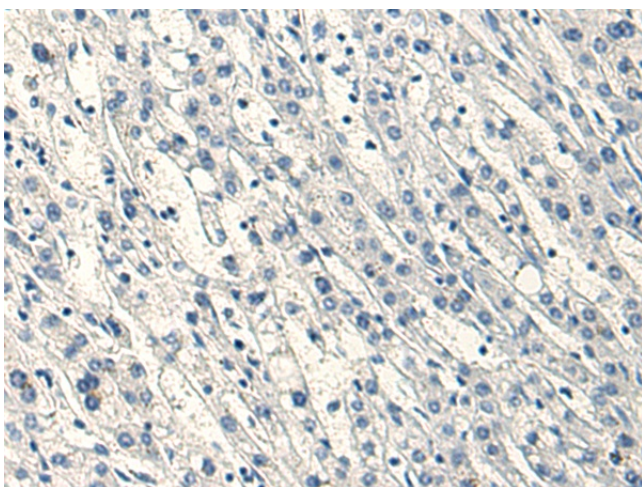
Product images:



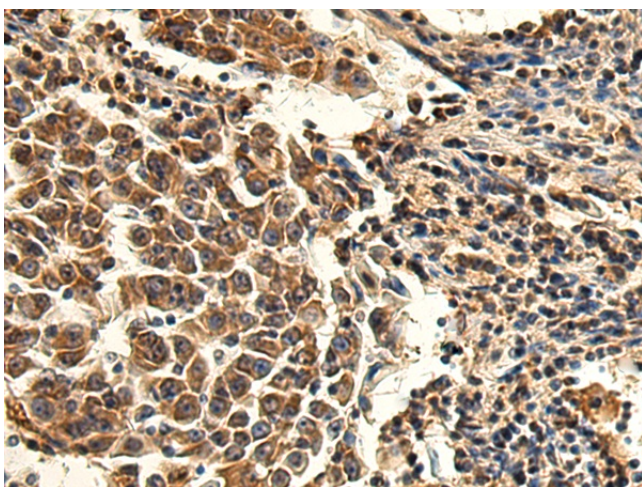
Gel: 12%SDS-PAGE
Lysate: 40 μ g
Lane 1-6: Human liver tissue
Mouse liver tissue
Mouse small intestines tissue
Hela cell
K562 cell
HepG2 cell lysates
Primary antibody: TA369413 (TMED4 Antibody) at dilution 1/1000
Secondary antibody: Goat anti rabbit IgG at 1/5000 dilution
Exposure time: 1 minute



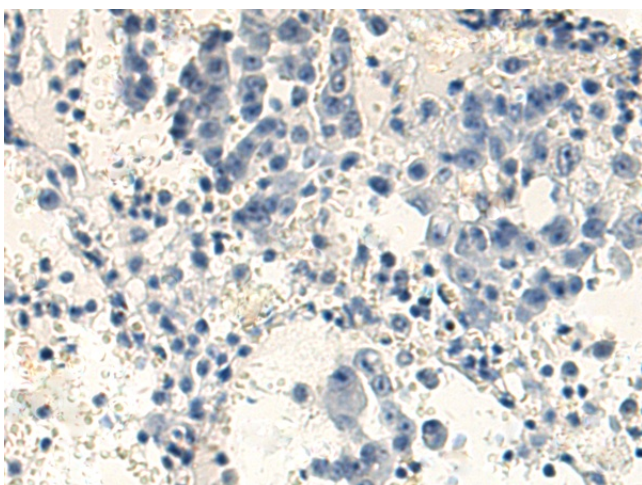
Immunohistochemistry of paraffin-embedded Human liver cancer tissue using TA369413 (TMED4 Antibody) at dilution 1/180 (Original magnification: \times 200)



Immunohistochemistry of paraffin-embedded Human liver cancer tissue using TA369413 (TMED4 Antibody) at dilution 1/180, treated with fusion protein. (Original magnification: $\times 200$)



Immunohistochemistry of paraffin-embedded Human lung cancer tissue using TA369413 (TMED4 Antibody) at dilution 1/180 (Original magnification: $\times 200$)



Immunohistochemistry of paraffin-embedded Human lung cancer tissue using TA369413 (TMED4 Antibody) at dilution 1/180, treated with fusion protein. (Original magnification: $\times 200$)