

Product datasheet for **TA369409**

TIMM17A Rabbit Polyclonal Antibody

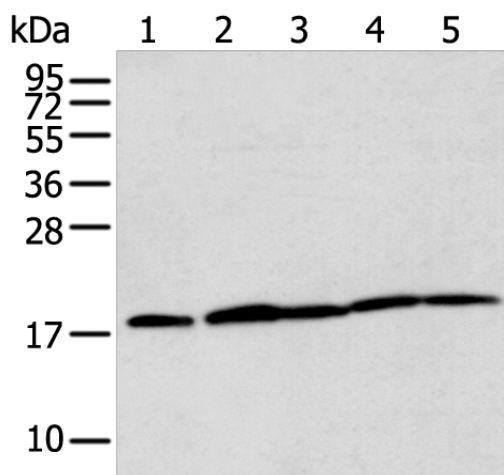
Product data:

Product Type:	Primary Antibodies
Applications:	IHC, WB
Recommended Dilution:	WB: 200-1000 WB positive control: A549,K-562,Hela,NIH/3T3 and RAW264.7 cell IHC: 25-100 Positive control: Human breast cancer Predicted cell location: Cytoplasm
Reactivity:	Human, Mouse, Rat
Host:	Rabbit
Isotype:	IgG
Clonality:	Polyclonal
Immunogen:	Full length fusion protein
Formulation:	pH7.4 PBS, 0.05% NaN ₃ , 40% Glycerol
Concentration:	lot specific
Purification:	Antigen affinity purification
Conjugation:	Unconjugated
Storage:	Store at -20°C.
Stability:	1 year
Predicted Protein Size:	18 kDa
Gene Name:	translocase of inner mitochondrial membrane 17 homolog A (yeast)
Database Link:	Entrez Gene 10440 Human Q99595
Background:	Essential component of the TIM23 complex, a complex that mediates the translocation of transit peptide-containing proteins across the mitochondrial inner membrane.
Synonyms:	MIMT17; TIM17; TIM17A; TIMM17



[View online »](#)

Product images:



Gel: 12%SDS-PAGE

Lysate: 40 μ g

Lane 1-5: A549

K-562

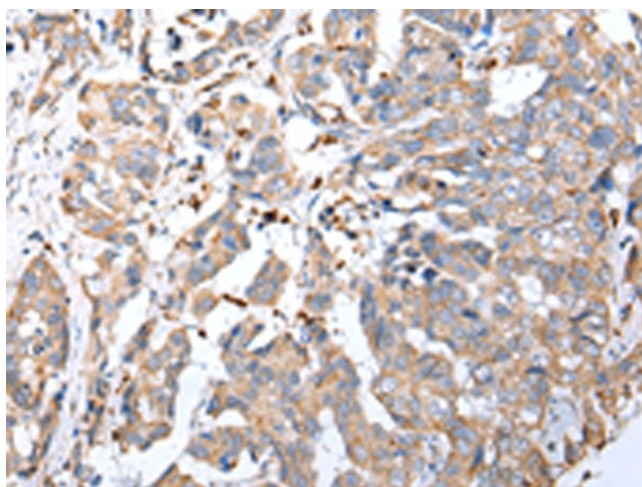
HeLa

NIH/3T3 and RAW264.7 cell

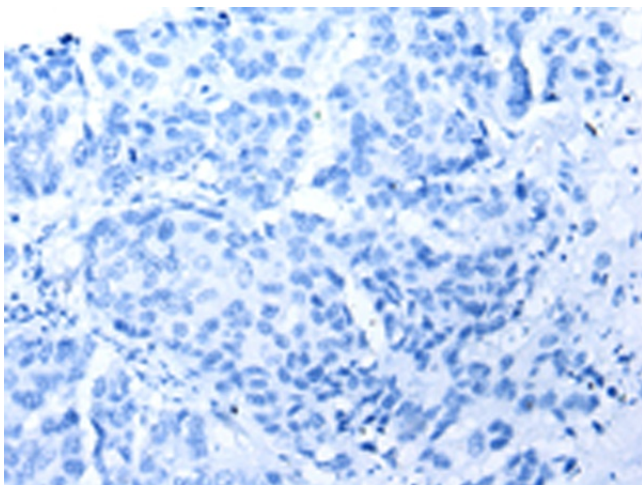
Primary antibody: TA369409 (TIMM17A Antibody)
at dilution 1/300

Secondary antibody: Goat anti rabbit IgG at
1/8000 dilution

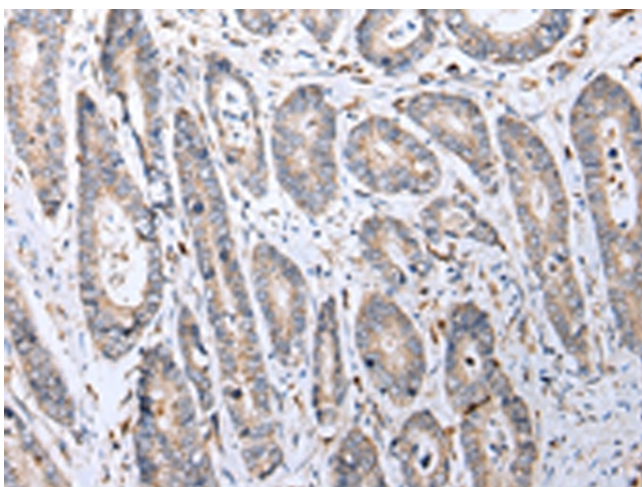
Exposure time: 5 seconds



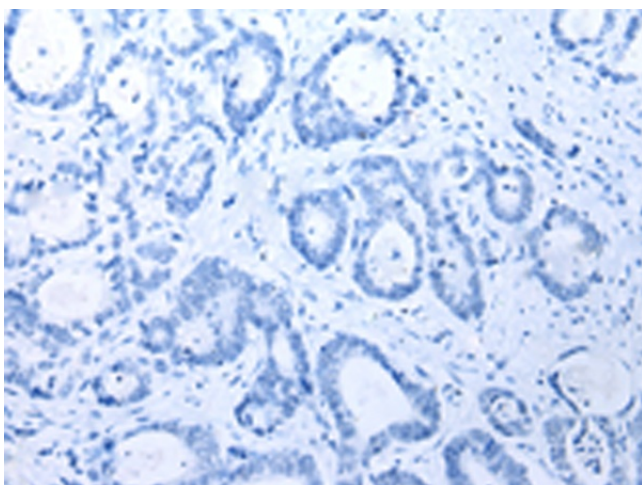
Immunohistochemistry of paraffin-embedded
Human breast cancer tissue using TA369409
(TIMM17A Antibody) at dilution 1/25 (Original
magnification: \times 200)



Immunohistochemistry of paraffin-embedded Human breast cancer tissue using TA369409 (TIMM17A Antibody) at dilution 1/25, treated with fusion protein. (Original magnification: $\times 200$)



Immunohistochemistry of paraffin-embedded Human gastric cancer tissue using TA369409 (TIMM17A Antibody) at dilution 1/25 (Original magnification: $\times 200$)



Immunohistochemistry of paraffin-embedded Human gastric cancer tissue using TA369409 (TIMM17A Antibody) at dilution 1/25, treated with fusion protein. (Original magnification: $\times 200$)