

## Product datasheet for **TA369398S**

### LEFTY2 Rabbit Polyclonal Antibody

#### Product data:

Product Type:	Primary Antibodies
Applications:	IHC, WB
Recommended Dilution:	WB: 500-2000 WB positive control: Human fetal muscle tissue IHC: 10-50 Positive control: Human liver cancer Predicted cell location: Cytoplasm and Cell membrane
Reactivity:	Human, Mouse
Host:	Rabbit
Isotype:	IgG
Clonality:	Polyclonal
Immunogen:	Full length fusion protein
Formulation:	pH7.4 PBS, 0.05% NaN <sub>3</sub> , 40% Glycerol
Purification:	Antigen affinity purification
Conjugation:	Unconjugated
Storage:	Store at -20°C.
Stability:	1 year
Predicted Protein Size:	41 kDa
Gene Name:	left-right determination factor 2
Database Link:	<a href="#">Entrez Gene 7044 Human</a> <a href="#">O00292</a>



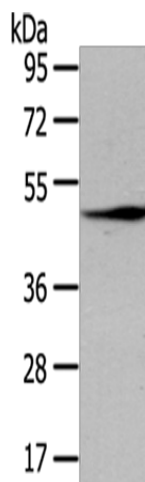
[View online »](#)

**Background:**

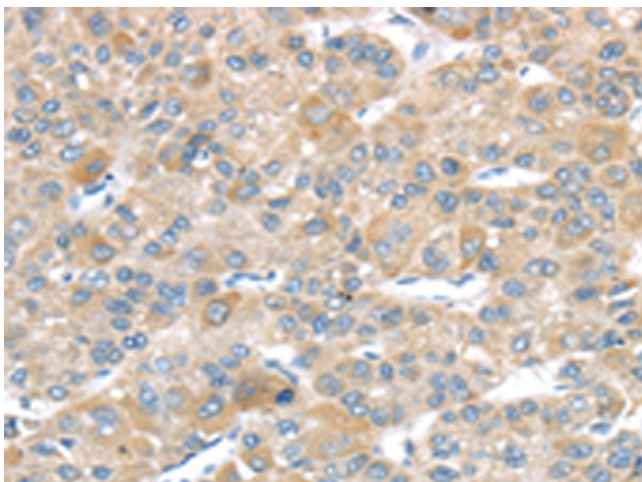
This gene encodes a member of the TGF-beta family of proteins. The encoded protein is secreted and plays a role in left-right asymmetry determination of organ systems during development. The protein may also play a role in endometrial bleeding. Mutations in this gene have been associated with left-right axis malformations, particularly in the heart and lungs. Some types of infertility have been associated with dysregulated expression of this gene in the endometrium. Alternative processing of this protein can yield three different products. This gene is closely linked to both a related family member and a related pseudogene. Alternate splicing of this gene results in multiple transcript variants.

**Synonyms:**

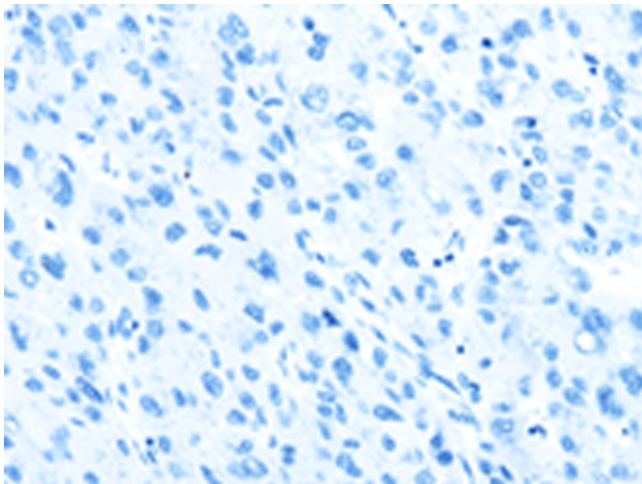
EBAF; LEFTA; LEFTYA; MGC46222; TGF-beta-4; TGFB4

**Product images:**

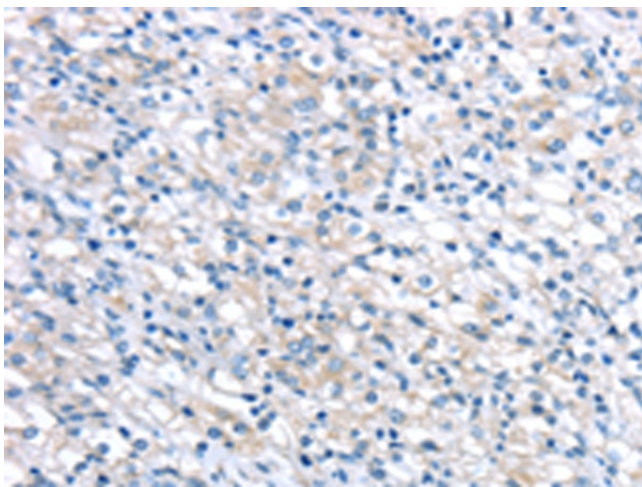
Gel: 8%SDS-PAGE  
Lysate: 40 µg  
Lane: Human fetal muscle tissue  
Primary antibody: [TA369398] (LEFTY2 Antibody) at dilution 1/200  
Secondary antibody: Goat anti rabbit IgG at 1/8000 dilution  
Exposure time: 30 seconds



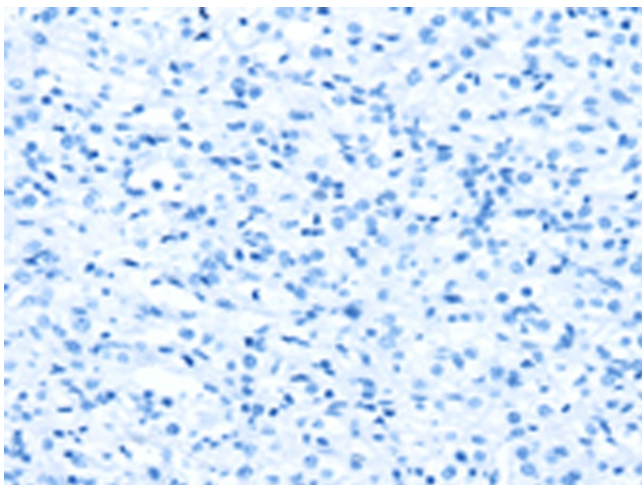
Immunohistochemistry of paraffin-embedded Human liver cancer tissue using [TA369398] (LEFTY2 Antibody) at dilution 1/20 (Original magnification: ×200)



Immunohistochemistry of paraffin-embedded Human liver cancer tissue using [TA369398] (LEFTY2 Antibody) at dilution 1/20, treated with fusion protein. (Original magnification:  $\times 200$ )



Immunohistochemistry of paraffin-embedded Human prostate cancer tissue using [TA369398] (LEFTY2 Antibody) at dilution 1/20 (Original magnification:  $\times 200$ )



Immunohistochemistry of paraffin-embedded Human prostate cancer tissue using [TA369398] (LEFTY2 Antibody) at dilution 1/20, treated with fusion protein. (Original magnification:  $\times 200$ )