

## Product datasheet for **TA369389**

### TATA binding protein (TBP) Rabbit Polyclonal Antibody

#### Product data:

Product Type:	Primary Antibodies
Applications:	IHC, WB
Recommended Dilution:	WB: 500-2000 WB positive control: 231 cell□Human testis tissue□Hela and Hepg2 cell IHC: 25-100 Positive control: Human esophagus cancer Predicted cell location: Nucleus
Reactivity:	Human
Host:	Rabbit
Isotype:	IgG
Clonality:	Polyclonal
Immunogen:	Full length fusion protein
Formulation:	pH7.4 PBS, 0.05% NaN <sub>3</sub> , 40% Glycerol
Concentration:	lot specific
Purification:	Antigen affinity purification
Conjugation:	Unconjugated
Storage:	Store at -20°C.
Stability:	1 year
Predicted Protein Size:	38 kDa
Gene Name:	TATA-box binding protein
Database Link:	<a href="#">Entrez Gene 6908 Human P20226</a>



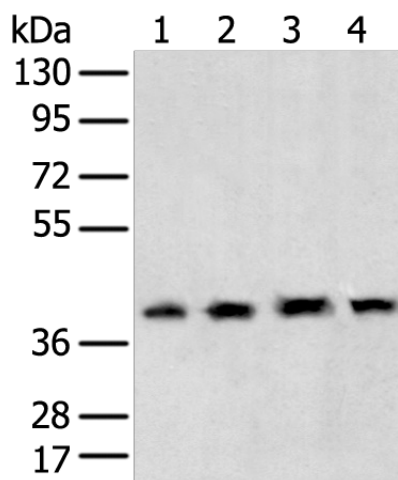
[View online »](#)

**Background:**

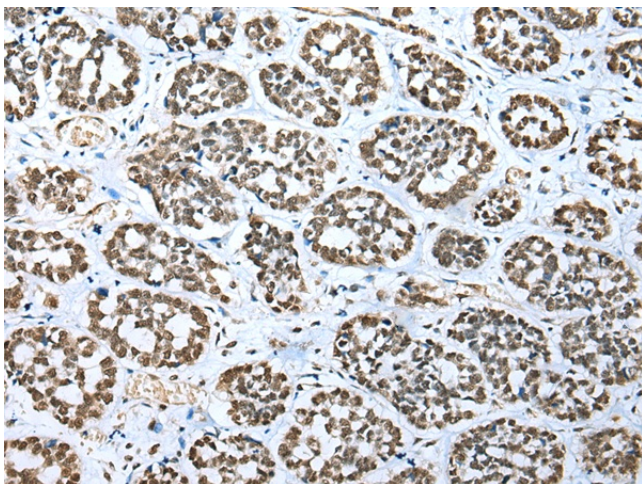
This gene encodes TBP, the TATA-binding protein. A distinctive feature of TBP is a long string of glutamines in the N-terminus. This region of the protein modulates the DNA binding activity of the C terminus, and modulation of DNA binding affects the rate of transcription complex formation and initiation of transcription. The number of CAG repeats encoding the polyglutamine tract is usually 32-39, and expansion of the number of repeats increases the length of the polyglutamine string and is associated with spinocerebellar ataxia 17, a neurodegenerative disorder classified as a polyglutamine disease.

**Synonyms:**

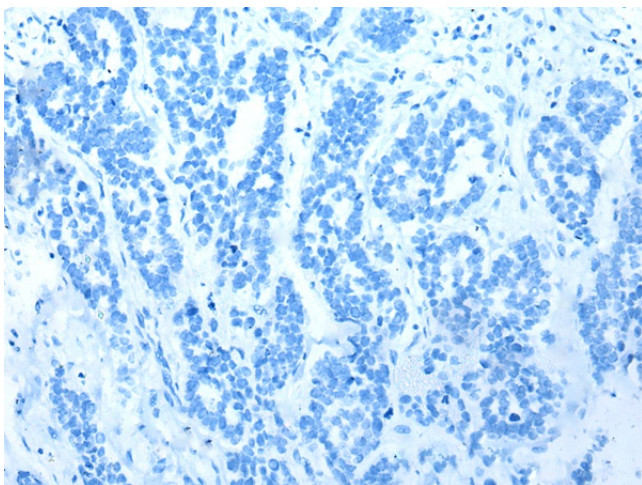
GTF2D; GTF2D1; HDL4; SCA17; TFIID

**Product images:**

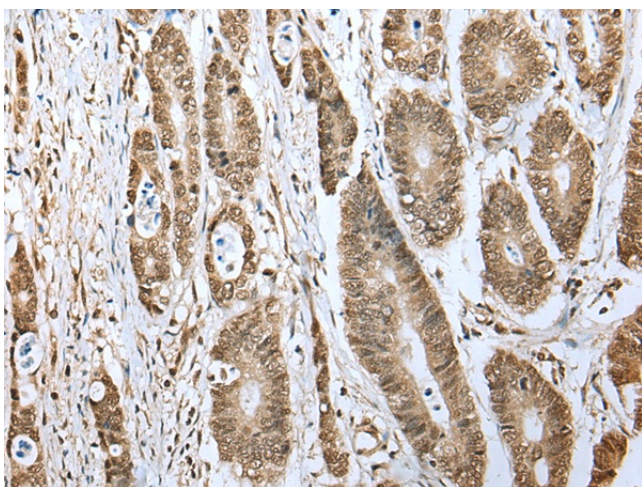
Gel: 8%SDS-PAGE  
Lysate: 40 µg  
Lane 1-4: 231 cell  
Human testis tissue  
Hela and Hepg2 cell  
Primary antibody: TA369389 (TBP Antibody) at dilution 1/400  
Secondary antibody: Goat anti rabbit IgG at 1/8000 dilution  
Exposure time: 5 seconds



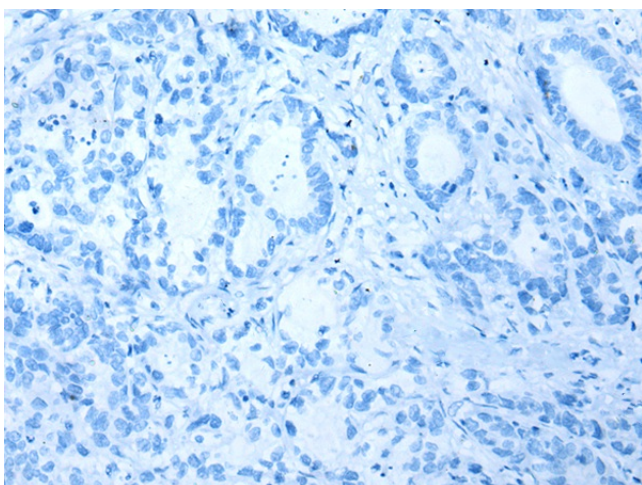
Immunohistochemistry of paraffin-embedded Human esophagus cancer tissue using TA369389 (TBP Antibody) at dilution 1/20 (Original magnification: ×200)



Immunohistochemistry of paraffin-embedded Human esophagus cancer tissue using TA369389 (TBP Antibody) at dilution 1/20, treated with fusion protein. (Original magnification:  $\times 200$ )



Immunohistochemistry of paraffin-embedded Human gastric cancer tissue using TA369389 (TBP Antibody) at dilution 1/20 (Original magnification:  $\times 200$ )



Immunohistochemistry of paraffin-embedded Human gastric cancer tissue using TA369389 (TBP Antibody) at dilution 1/20, treated with fusion protein. (Original magnification:  $\times 200$ )