

Product datasheet for **TA369386S**

STX10 Rabbit Polyclonal Antibody

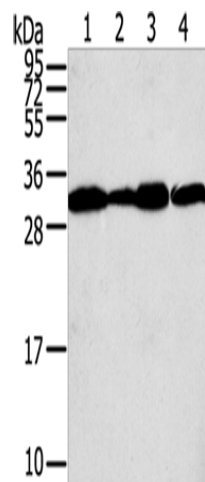
Product data:

Product Type:	Primary Antibodies
Applications:	IHC, WB
Recommended Dilution:	WB: 1000-5000 WB positive control: A375, A431, Iovo and hela cells IHC: 30-150 Positive control: Human esophagus cancer Predicted cell location: Cytoplasm
Reactivity:	Human
Host:	Rabbit
Isotype:	IgG
Clonality:	Polyclonal
Immunogen:	Fusion protein of human STX10
Formulation:	pH7.4 PBS, 0.05% NaN ₃ , 40% Glycerol
Purification:	Antigen affinity purification
Conjugation:	Unconjugated
Storage:	Store at -20°C.
Stability:	1 year
Predicted Protein Size:	28 kDa
Gene Name:	syntaxin 10
Database Link:	Entrez Gene 8677 Human O60499
Background:	This gene belongs to the syntaxin family and encodes a soluble N-ethylmaleimide sensitive factor attachment protein receptor (SNARE). The encoded protein is involved in docking and fusion events at the Golgi apparatus. Alternative splicing results in multiple transcript variants.
Synonyms:	hsyn10; SYN10

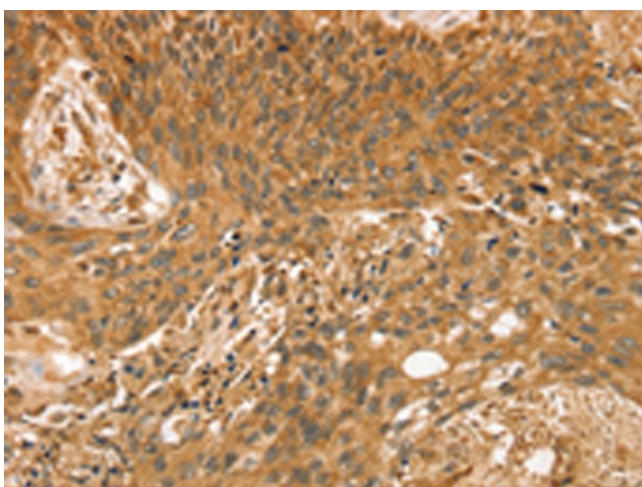


[View online »](#)

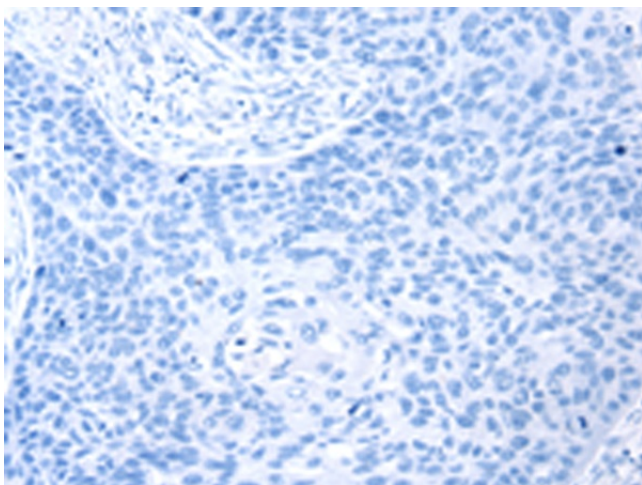
Product images:



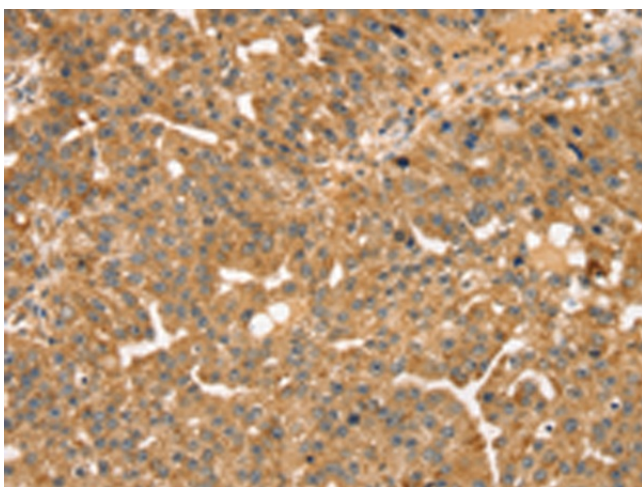
Gel: 12%SDS-PAGE
Lysate: 40 μ g
Lane 1-4: A375 cells
A431 cells
lovo cells
hela cells
Primary antibody: [TA369386] (STX10 Antibody) at dilution 1/800
Secondary antibody: Goat anti rabbit IgG at 1/8000 dilution
Exposure time: 5 seconds



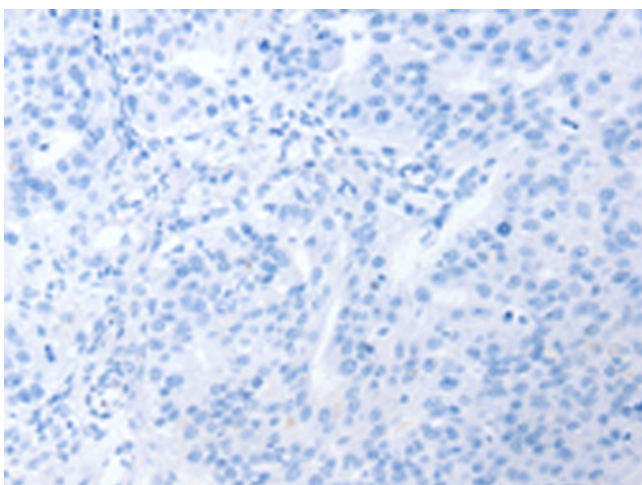
Immunohistochemistry of paraffin-embedded Human esophagus cancer tissue using [TA369386] (STX10 Antibody) at dilution 1/35 (Original magnification: $\times 200$)



Immunohistochemistry of paraffin-embedded Human esophagus cancer tissue using [TA369386] (STX10 Antibody) at dilution 1/35, treated with fusion protein. (Original magnification: ×200)



Immunohistochemistry of paraffin-embedded Human breast cancer tissue using [TA369386] (STX10 Antibody) at dilution 1/35 (Original magnification: ×200)



Immunohistochemistry of paraffin-embedded Human breast cancer tissue using [TA369386] (STX10 Antibody) at dilution 1/35, treated with fusion protein. (Original magnification: ×200)