

## Product datasheet for **TA369382S**

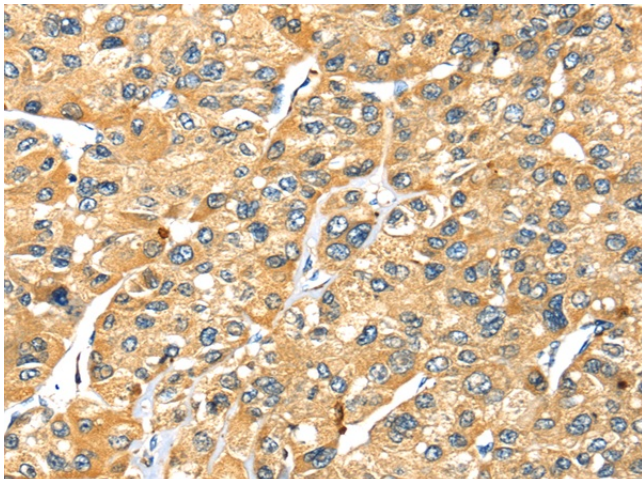
### Syntaxin 7 (STX7) Rabbit Polyclonal Antibody

#### Product data:

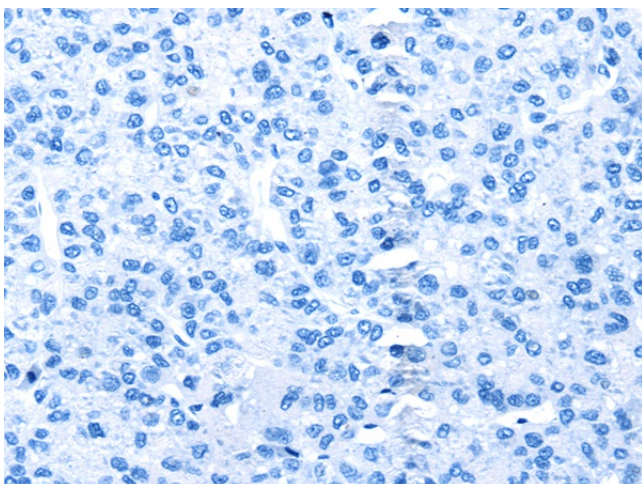
Product Type:	Primary Antibodies
Applications:	IHC
Recommended Dilution:	IHC: 25-100 Positive control: Human liver cancer Predicted cell location: Cytoplasm and Cell membrane
Reactivity:	Human, Mouse, Rat
Host:	Rabbit
Isotype:	IgG
Clonality:	Polyclonal
Immunogen:	Fusion protein of human STX7
Formulation:	pH7.4 PBS, 0.05% NaN <sub>3</sub> , 40% Glycerol
Purification:	Antigen affinity purification
Conjugation:	Unconjugated
Storage:	Store at -20°C.
Stability:	1 year
Gene Name:	syntaxin 7
Database Link:	<a href="#">Entrez Gene 8417 Human O15400</a>
Background:	May be involved in protein trafficking from the plasma membrane to the early endosome (EE) as well as in homotypic fusion of endocytic organelles. Mediates the endocytic trafficking from early endosomes to late endosomes and lysosomes.
Synonyms:	OTTHUMP00000017219



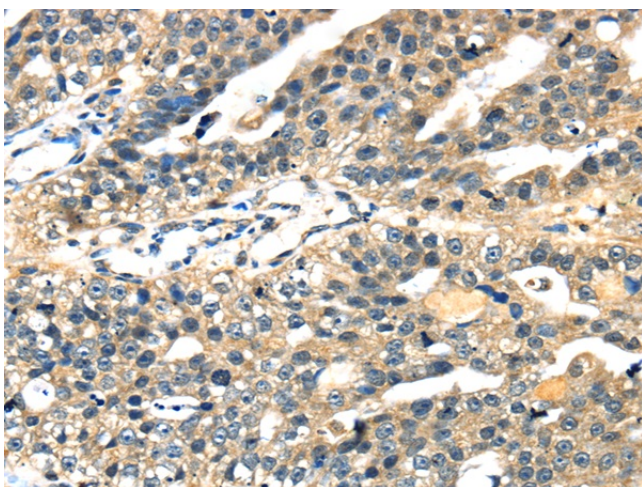
[View online »](#)

**Product images:**

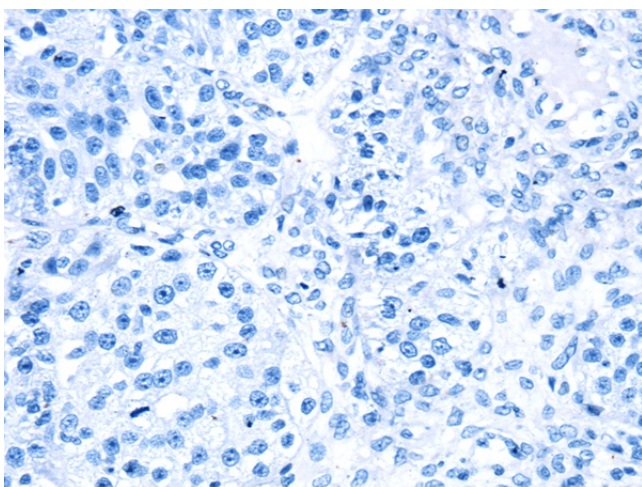
Immunohistochemistry of paraffin-embedded Human liver cancer tissue using [TA369382] (STX7 Antibody) at dilution 1/25 (Original magnification: x200)



Immunohistochemistry of paraffin-embedded Human liver cancer tissue using [TA369382] (STX7 Antibody) at dilution 1/25, treated with fusion protein. (Original magnification: x200)



Immunohistochemistry of paraffin-embedded Human breast cancer tissue using [TA369382] (STX7 Antibody) at dilution 1/25 (Original magnification: ×200)



Immunohistochemistry of paraffin-embedded Human breast cancer tissue using [TA369382] (STX7 Antibody) at dilution 1/25, treated with fusion protein. (Original magnification: ×200)