

## Product datasheet for **TA369381**

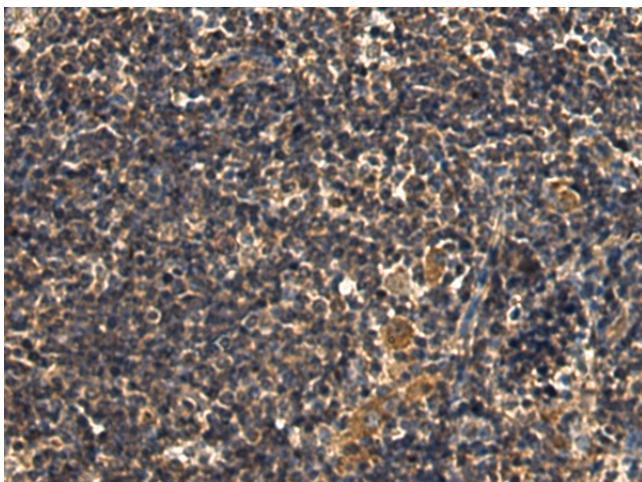
### SFTPA2 Rabbit Polyclonal Antibody

#### Product data:

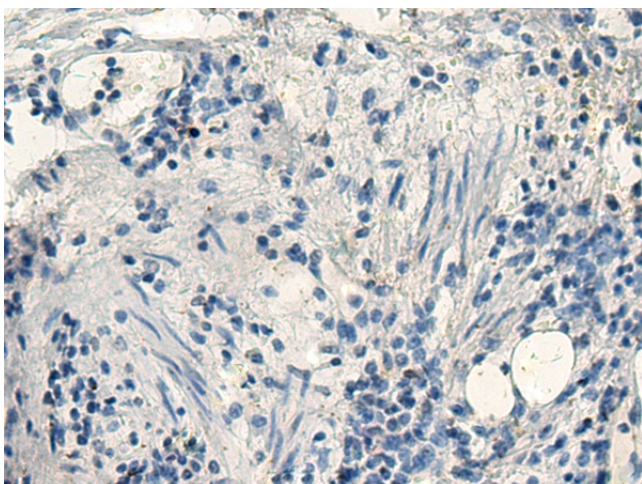
Product Type:	Primary Antibodies
Applications:	IHC
Recommended Dilution:	IHC: 150-300 Positive control: Human esophagus cancer Predicted cell location: Cytoplasm
Reactivity:	Human
Host:	Rabbit
Isotype:	IgG
Clonality:	Polyclonal
Immunogen:	Fusion protein of human SFTPA2
Formulation:	pH7.4 PBS, 0.05% NaN <sub>3</sub> , 40% Glycerol
Concentration:	lot specific
Purification:	Antigen affinity purification
Conjugation:	Unconjugated
Storage:	Store at -20°C.
Stability:	1 year
Gene Name:	surfactant protein A2
Database Link:	<a href="#">Entrez Gene 729238 Human Q8IWL1</a>
Background:	This gene is one of several genes encoding pulmonary-surfactant associated proteins (SFTPA) located on chromosome 10. Mutations in this gene and a highly similar gene located nearby, which affect the highly conserved carbohydrate recognition domain, are associated with idiopathic pulmonary fibrosis. The current version of the assembly displays only a single centromeric SFTPA gene pair rather than the two gene pairs shown in the previous assembly which were thought to have resulted from a duplication.
Synonyms:	COLEC5; FLJ50594; FLJ50597; FLJ51953; FLJ79091; FLJ93678; MGC133169; MGC133366; MGC189714; MGC189761; PSAP; PSP-A; PSPA; SFTP1; SFTPA; SP-A; SP-A2; SPA2; SPAII



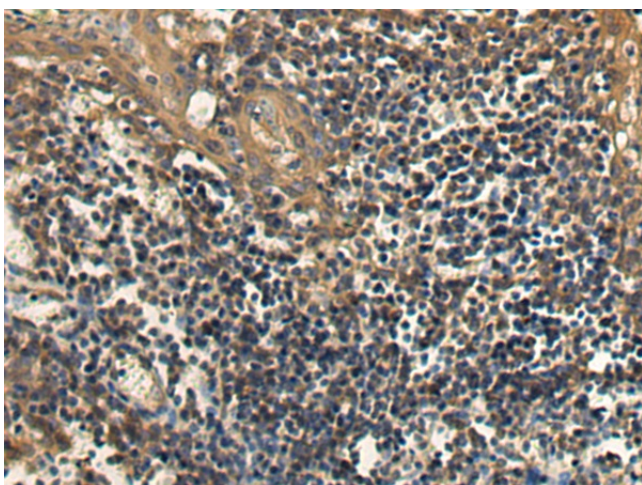
[View online »](#)

**Product images:**

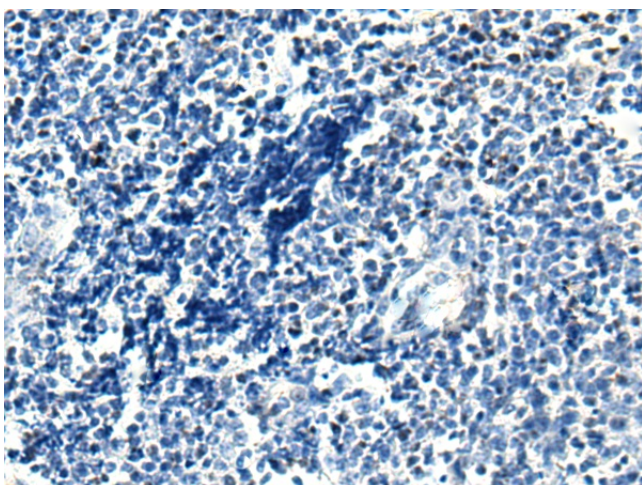
Immunohistochemistry of paraffin-embedded Human esophagus cancer tissue using TA369381 (SFTPA2 Antibody) at dilution 1/120 (Original magnification:  $\times 200$ )



Immunohistochemistry of paraffin-embedded Human esophagus cancer tissue using TA369381 (SFTPA2 Antibody) at dilution 1/120, treated with fusion protein. (Original magnification:  $\times 200$ )



Immunohistochemistry of paraffin-embedded Human tonsil tissue using TA369381 (SFTPA2 Antibody) at dilution 1/120 (Original magnification:  $\times 200$ )



Immunohistochemistry of paraffin-embedded Human tonsil tissue using TA369381 (SFTPA2 Antibody) at dilution 1/120, treated with fusion protein. (Original magnification:  $\times 200$ )