

## Product datasheet for **TA369380S**

### **SURF6 Rabbit Polyclonal Antibody**

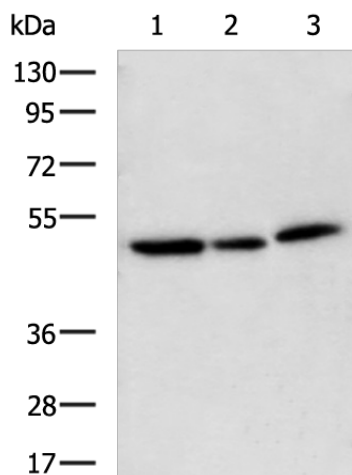
#### **Product data:**

Product Type:	Primary Antibodies
Applications:	IHC, WB
Recommended Dilution:	WB: 500-2000 WB positive control: HL-60, K562 and Hela cell lysates IHC: 100-200 Positive control: Human tonsil Predicted cell location: Nucleus
Reactivity:	Human
Host:	Rabbit
Isotype:	IgG
Clonality:	Polyclonal
Immunogen:	Fusion protein of human SURF6
Formulation:	pH7.4 PBS, 0.05% NaN <sub>3</sub> , 40% Glycerol
Purification:	Antigen affinity purification
Conjugation:	Unconjugated
Storage:	Store at -20°C.
Stability:	1 year
Predicted Protein Size:	41 kDa
Gene Name:	surfeit 6
Database Link:	<a href="#">Entrez Gene 6838 Human O75683</a>
Background:	This gene encodes a conserved protein that is localized to the nucleolus. The encoded protein may function as a nucleolar-matrix protein with nucleic acid-binding properties. There is a pseudogene for this gene on chromosome Y. Alternative splicing results in multiple transcript variants.
Synonyms:	FLJ30322; SURF-6

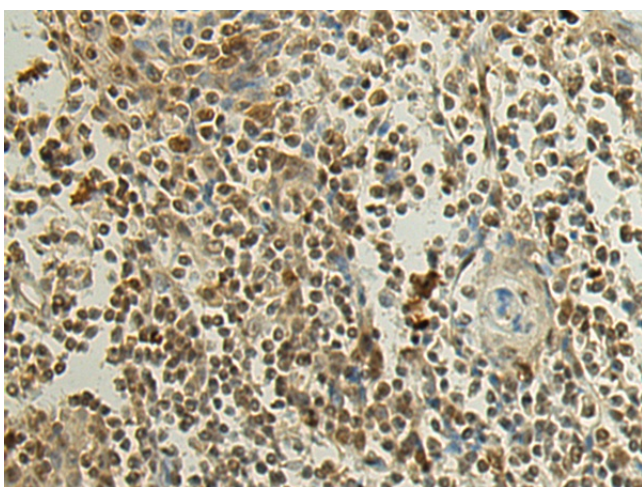


[View online »](#)

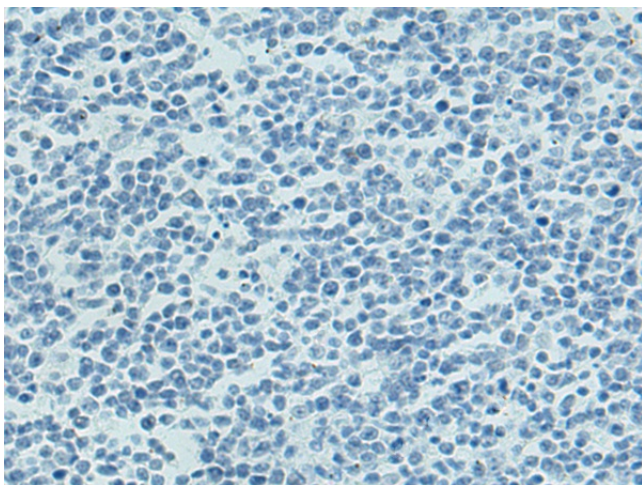
**Product images:**



Gel: 8%SDS-PAGE  
Lysate: 40 µg  
Lane 1-3: HL-60  
K562 and Hela cell lysates  
Primary antibody: [TA369380] (SURF6 Antibody)  
at dilution 1/700  
Secondary antibody: Goat anti rabbit IgG at  
1/5000 dilution  
Exposure time: 10 seconds



Immunohistochemistry of paraffin-embedded  
Human tonsil tissue using [TA369380] (SURF6  
Antibody) at dilution 1/120 (Original  
magnification: ×200)



Immunohistochemistry of paraffin-embedded Human tonsil tissue using [TA369380] (SURF6 Antibody) at dilution 1/120, treated with fusion protein. (Original magnification: ×200)