

Product datasheet for **TA369380**

SURF6 Rabbit Polyclonal Antibody

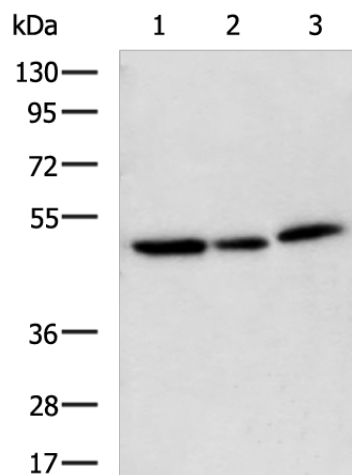
Product data:

Product Type:	Primary Antibodies
Applications:	IHC, WB
Recommended Dilution:	WB: 500-2000 WB positive control: HL-60, K562 and Hela cell lysates IHC: 100-200 Positive control: Human tonsil Predicted cell location: Nucleus
Reactivity:	Human
Host:	Rabbit
Isotype:	IgG
Clonality:	Polyclonal
Immunogen:	Fusion protein of human SURF6
Formulation:	pH7.4 PBS, 0.05% NaN ₃ , 40% Glycerol
Concentration:	lot specific
Purification:	Antigen affinity purification
Conjugation:	Unconjugated
Storage:	Store at -20°C.
Stability:	1 year
Predicted Protein Size:	41 kDa
Gene Name:	surfeit 6
Database Link:	Entrez Gene 6838 Human O75683
Background:	This gene encodes a conserved protein that is localized to the nucleolus. The encoded protein may function as a nucleolar-matrix protein with nucleic acid-binding properties. There is a pseudogene for this gene on chromosome Y. Alternative splicing results in multiple transcript variants.
Synonyms:	FLJ30322; SURF-6

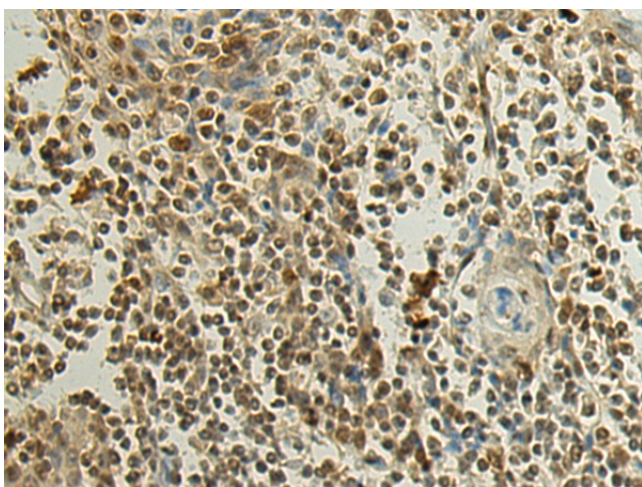


[View online »](#)

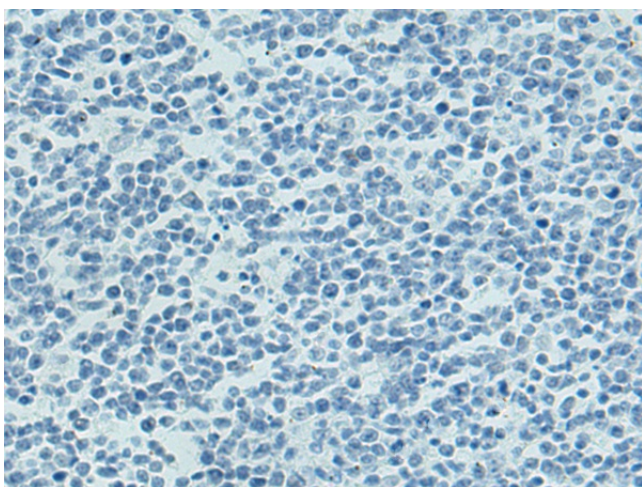
Product images:



Gel: 8%SDS-PAGE
Lysate: 40 μ g
Lane 1-3: HL-60
K562 and Hela cell lysates
Primary antibody: TA369380 (SURF6 Antibody) at dilution 1/700
Secondary antibody: Goat anti rabbit IgG at 1/5000 dilution
Exposure time: 10 seconds



Immunohistochemistry of paraffin-embedded Human tonsil tissue using TA369380 (SURF6 Antibody) at dilution 1/120 (Original magnification: \times 200)



Immunohistochemistry of paraffin-embedded Human tonsil tissue using TA369380 (SURF6 Antibody) at dilution 1/120, treated with fusion protein. (Original magnification: x200)