

## Product datasheet for **TA369378S**

### SULT2A1 Rabbit Polyclonal Antibody

#### Product data:

Product Type:	Primary Antibodies
Applications:	IHC, WB
Recommended Dilution:	WB: 500-2000 WB positive control: Human fetal liver tissue IHC: 25-100 Positive control: Human liver cancer Predicted cell location: Cytoplasm and Nucleus
Reactivity:	Human
Host:	Rabbit
Isotype:	IgG
Clonality:	Polyclonal
Immunogen:	Fusion protein of human SULT2A1
Formulation:	pH7.4 PBS, 0.05% NaN <sub>3</sub> , 40% Glycerol
Purification:	Antigen affinity purification
Conjugation:	Unconjugated
Storage:	Store at -20°C.
Stability:	1 year
Predicted Protein Size:	34 kDa
Gene Name:	sulfotransferase family 2A member 1
Database Link:	<a href="#">Entrez Gene 6822 Human Q06520</a>
Background:	This gene encodes a member of the sulfotransferase family. Sulfotransferases aid in the metabolism of drugs and endogenous compounds by converting these substances into more hydrophilic water-soluble sulfate conjugates that can be easily excreted. This protein catalyzes the sulfation of steroids and bile acids in the liver and adrenal glands, and may have a role in the inherited adrenal androgen excess in women with polycystic ovary syndrome.
Synonyms:	DHEA-ST; DHEAS; HST; hSTa; ST2; ST2A3; STD

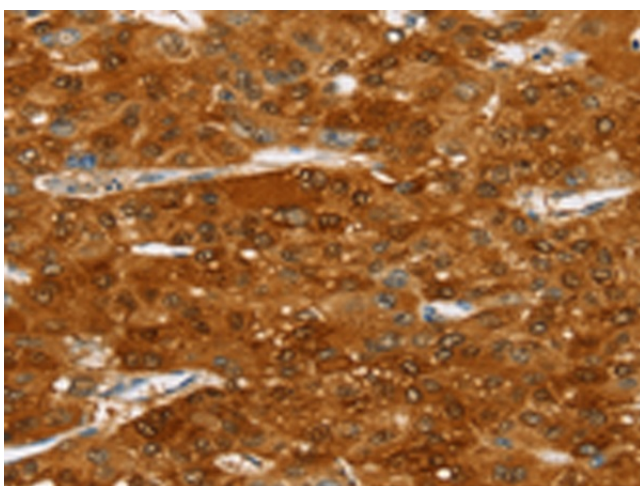


[View online »](#)

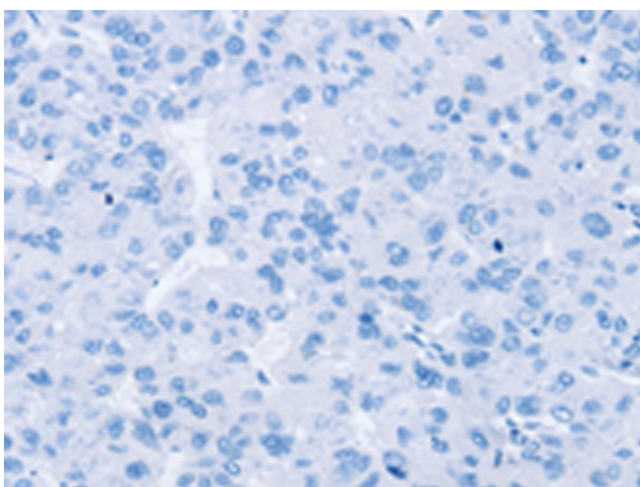
## Product images:



Gel: 8%SDS-PAGE  
Lysate: 40  $\mu$ g  
Lane: Human fetal liver tissue  
Primary antibody: [TA369378] (SULT2A1 Antibody) at dilution 1/650  
Secondary antibody: Goat anti rabbit IgG at 1/8000 dilution  
Exposure time: 1 second



Immunohistochemistry of paraffin-embedded Human liver cancer tissue using [TA369378] (SULT2A1 Antibody) at dilution 1/20 (Original magnification:  $\times$ 200)



Immunohistochemistry of paraffin-embedded Human liver cancer tissue using [TA369378] (SULT2A1 Antibody) at dilution 1/20, treated with fusion protein. (Original magnification:  $\times$ 200)