

Product datasheet for **TA369371S**

RO60 Rabbit Polyclonal Antibody

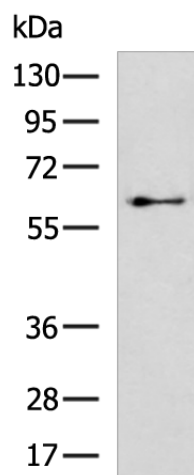
Product data:

Product Type:	Primary Antibodies
Applications:	WB
Recommended Dilution:	WB: 500-2000 WB positive control: 293T cell lysate
Reactivity:	Human, Mouse
Host:	Rabbit
Isotype:	IgG
Clonality:	Polyclonal
Immunogen:	Fusion protein of human RO60
Formulation:	pH7.4 PBS, 0.05% NaN ₃ , 40% Glycerol
Purification:	Antigen affinity purification
Conjugation:	Unconjugated
Storage:	Store at -20°C.
Stability:	1 year
Predicted Protein Size:	61 kDa
Gene Name:	TROVE domain family member 2
Database Link:	Entrez Gene 6738 Human P10155
Background:	TROVE2, also named as RO60 or RoRNP, is a 538 amino acid protein, which is localized in cytoplasmic mRNP granules containing untranslated mRNAs. TROVE2 as a RNA-binding protein that binds to misfolded non-coding RNAs, pre-5S rRNA, and several small cytoplasmic RNA molecules known as Y RNAs. TROVE2 may stabilize some of these RNAs and protect them from degradation. TROVE2 binds to endogenous Alu retroelements which are induced by type I IFN and stimulate porinflammotry cytokine secretion.
Synonyms:	OTTHUMP00000033760; RO60; RoRNP; SS-A; SSA2



[View online »](#)

Product images:



Gel: 8%SDS-PAGE
Lysate: 40 μ g
Lane: 293T cell lysate
Primary antibody: [TA369371] (RO60 Antibody) at dilution 1/800
Secondary antibody: Goat anti rabbit IgG at 1/5000 dilution
Exposure time: 2 minutes