

## Product datasheet for **TA369368**

### Sprouty 3 (SPRY3) Rabbit Polyclonal Antibody

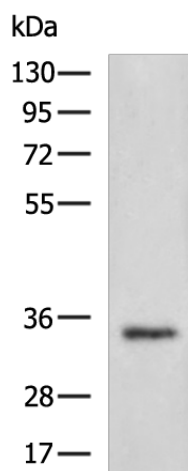
#### Product data:

Product Type:	Primary Antibodies
Applications:	IHC, WB
Recommended Dilution:	WB: 500-2000 WB positive control: Mouse brain tissue lysate IHC: 50-200 Positive control: Human colorectal cancer Predicted cell location: Cytoplasm
Reactivity:	Human, Mouse
Host:	Rabbit
Isotype:	IgG
Clonality:	Polyclonal
Immunogen:	Fusion protein of human SPRY3
Formulation:	pH7.4 PBS, 0.05% NaN <sub>3</sub> , 40% Glycerol
Concentration:	lot specific
Purification:	Antigen affinity purification
Conjugation:	Unconjugated
Storage:	Store at -20°C.
Stability:	1 year
Predicted Protein Size:	31 kDa
Gene Name:	sprouty RTK signaling antagonist 3
Database Link:	<a href="#">Entrez Gene 10251 Human O43610</a>
Background:	Inhibits neurite branching, arbor length and neurite complexity (By similarity). Inhibits EGF-mediated p42/44 ERK signaling (By similarity). Negatively regulates the MAPK cascade, resulting in a reduction of extracellular matrix protein accumulation (PubMed:30878395). May function as an antagonist of fibroblast growth factor (FGF) pathways and may negatively modulate respiratory organogenesis (PubMed:9458049).
Synonyms:	HSPRY3; Spry-3

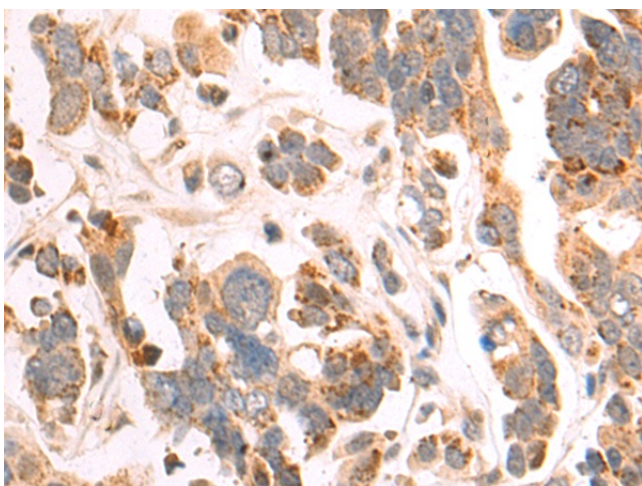


[View online »](#)

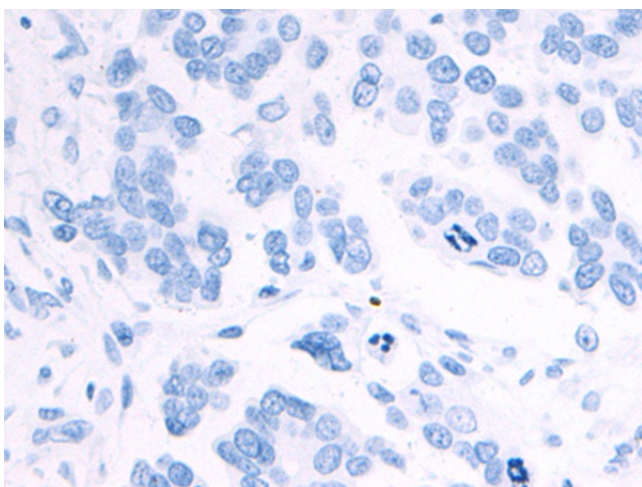
## Product images:



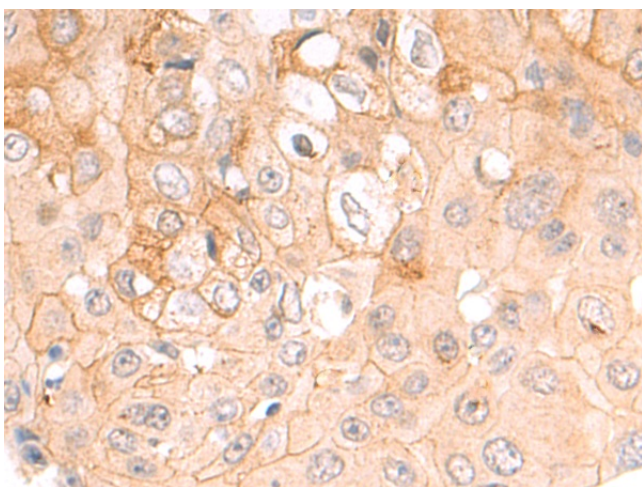
Gel: 8%SDS-PAGE  
Lysate: 40  $\mu$ g  
Lane: Mouse brain tissue lysate  
Primary antibody: TA369368 (SPRY3 Antibody) at dilution 1/400  
Secondary antibody: Goat anti rabbit IgG at 1/5000 dilution  
Exposure time: 2 minutes



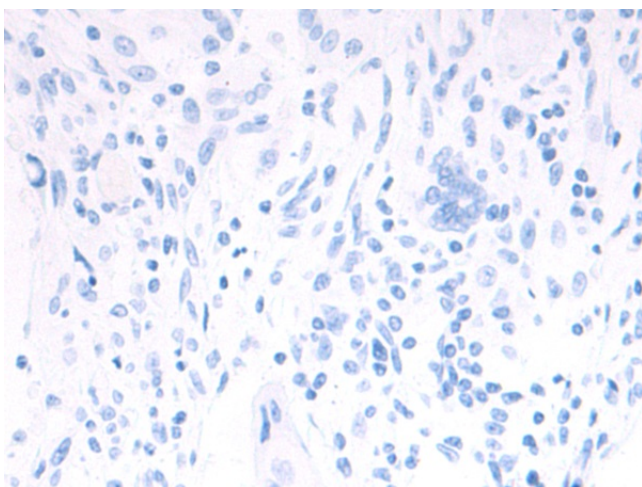
Immunohistochemistry of paraffin-embedded Human colorectal cancer tissue using TA369368 (SPRY3 Antibody) at dilution 1/50 (Original magnification:  $\times$ 200)



Immunohistochemistry of paraffin-embedded Human colorectal cancer tissue using TA369368 (SPRY3 Antibody) at dilution 1/50, treated with fusion protein. (Original magnification:  $\times 200$ )



Immunohistochemistry of paraffin-embedded Human esophagus cancer tissue using TA369368 (SPRY3 Antibody) at dilution 1/50 (Original magnification:  $\times 200$ )



Immunohistochemistry of paraffin-embedded Human esophagus cancer tissue using TA369368 (SPRY3 Antibody) at dilution 1/50, treated with fusion protein. (Original magnification:  $\times 200$ )