

Product datasheet for **TA369367S**

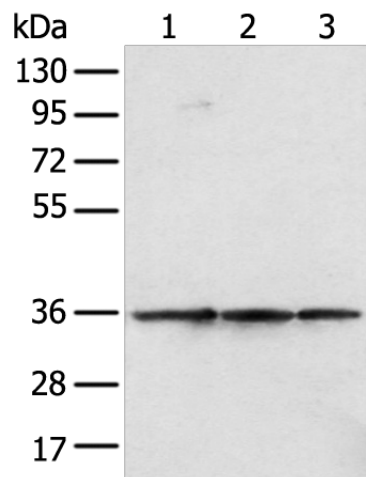
Sprouty 4 (SPRY4) Rabbit Polyclonal Antibody

Product data:

Product Type:	Primary Antibodies
Applications:	IHC, WB
Recommended Dilution:	WB: 200-1000 WB positive control: Hela and Hepg2 cell Mouse brain tissue IHC: 10-50 Positive control: Human brain Predicted cell location: Cytoplasm
Reactivity:	Human, Mouse
Host:	Rabbit
Isotype:	IgG
Clonality:	Polyclonal
Immunogen:	Full length fusion protein
Formulation:	pH7.4 PBS, 0.05% NaN ₃ , 40% Glycerol
Purification:	Antigen affinity purification
Conjugation:	Unconjugated
Storage:	Store at -20°C.
Stability:	1 year
Predicted Protein Size:	33 kDa
Gene Name:	sprouty RTK signaling antagonist 4
Database Link:	Entrez Gene 81848 Human Q9C004
Background:	This gene encodes a member of a family of cysteine- and proline-rich proteins. The encoded protein is an inhibitor of the receptor-transduced mitogen-activated protein kinase (MAPK) signaling pathway. Activity of this protein impairs the formation of active GTP-RAS. Nucleotide variation in this gene has been associated with hypogonadotropic hypogonadism 17 with or without anosmia. Alternative splicing results in a multiple transcript variants.
Synonyms:	Spry-4



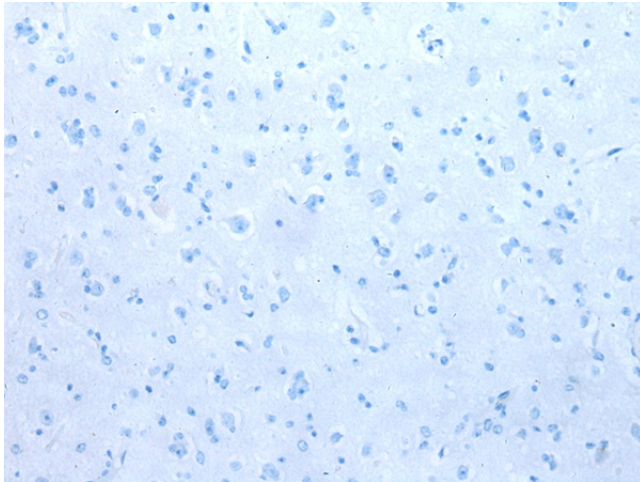
[View online »](#)

Product images:


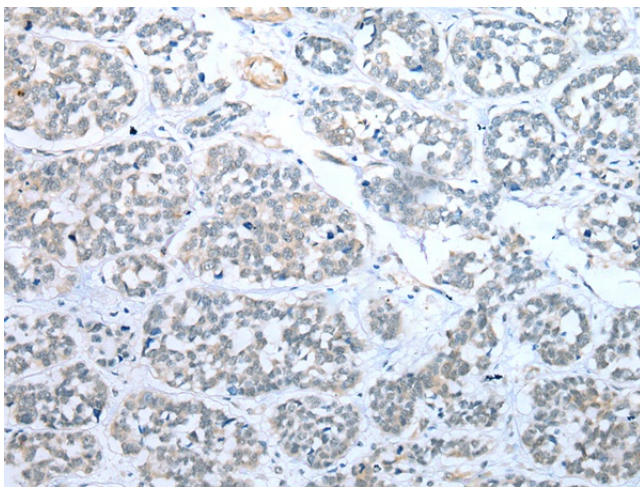
Gel: 8%SDS-PAGE
 Lysate: 40 µg
 Lane 1-3: HeLa and Hepg2 cell
 Mouse brain tissue
 Primary antibody: [TA369367] (SPRY4 Antibody)
 at dilution 1/200
 Secondary antibody: Goat anti rabbit IgG at
 1/8000 dilution
 Exposure time: 10 seconds



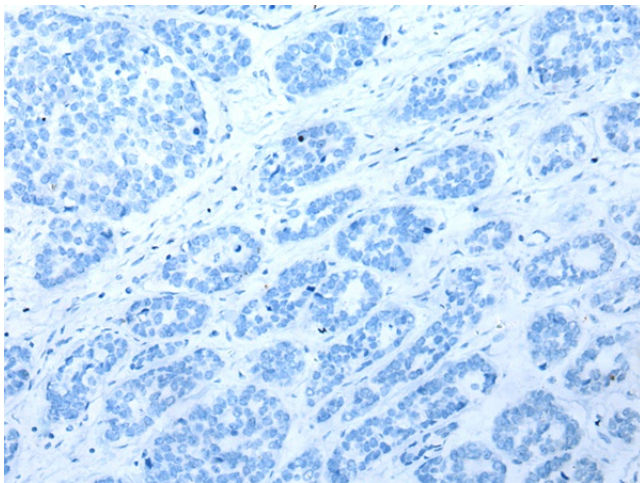
Immunohistochemistry of paraffin-embedded
 Human brain tissue using [TA369367] (SPRY4
 Antibody) at dilution 1/20 (Original magnification:
 ×200)



Immunohistochemistry of paraffin-embedded Human brain tissue using [TA369367] (SPRY4 Antibody) at dilution 1/20, treated with fusion protein. (Original magnification: x200)



Immunohistochemistry of paraffin-embedded Human esophagus cancer tissue using [TA369367] (SPRY4 Antibody) at dilution 1/20 (Original magnification: x200)



Immunohistochemistry of paraffin-embedded Human esophagus cancer tissue using [TA369367] (SPRY4 Antibody) at dilution 1/20, treated with fusion protein. (Original magnification: x200)