

Product datasheet for **TA369366S**

Sprouty 2 (SPRY2) Rabbit Polyclonal Antibody

Product data:

Product Type:	Primary Antibodies
Applications:	IHC, WB
Recommended Dilution:	WB: 500-2000 WB positive control: A172, LOVO, A375, HepG2 cell lysates IHC: 200-400 Positive control: Human colorectal cancer Predicted cell location: Cytoplasm
Reactivity:	Human, Mouse
Host:	Rabbit
Isotype:	IgG
Clonality:	Polyclonal
Immunogen:	Fusion protein of human SPRY2
Formulation:	pH7.4 PBS, 0.05% NaN ₃ , 40% Glycerol
Purification:	Antigen affinity purification
Conjugation:	Unconjugated
Storage:	Store at -20°C.
Stability:	1 year
Predicted Protein Size:	35 kDa
Gene Name:	sprouty RTK signaling antagonist 2
Database Link:	Entrez Gene 10253 Human O43597



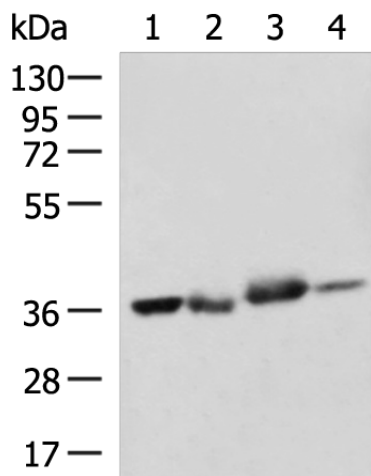
[View online »](#)

Background:

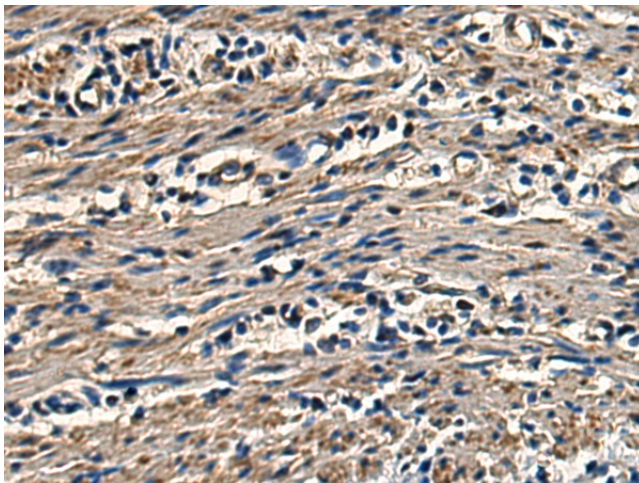
This gene encodes a protein belonging to the sprouty family. The encoded protein contains a carboxyl-terminal cysteine-rich domain essential for the inhibitory activity on receptor tyrosine kinase signaling proteins and is required for growth factor stimulated translocation of the protein to membrane ruffles. In primary dermal endothelial cells this gene is transiently upregulated in response to fibroblast growth factor two. This protein is indirectly involved in the non-cell autonomous inhibitory effect on fibroblast growth factor two signaling. The protein interacts with Cas-Br-M (murine) ectropic retroviral transforming sequence, and can function as a bimodal regulator of epidermal growth factor receptor/mitogen-activated protein kinase signaling. This protein may play a role in alveoli branching during lung development as shown by a similar mouse protein.

Synonyms:

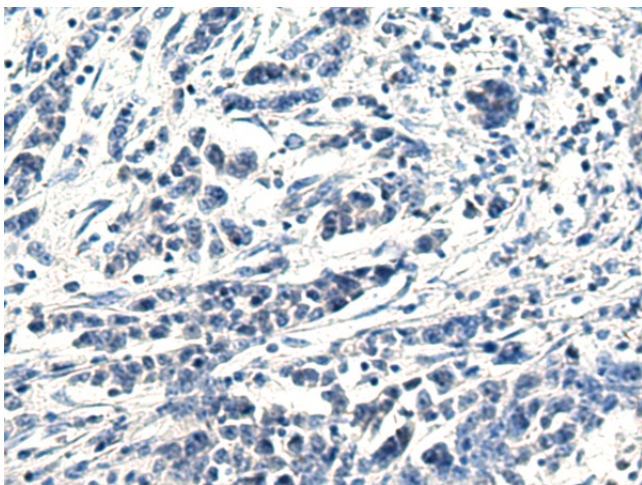
hSPRY2; MGC23039; OTTHUMP00000018544; Spry-2

Product images:


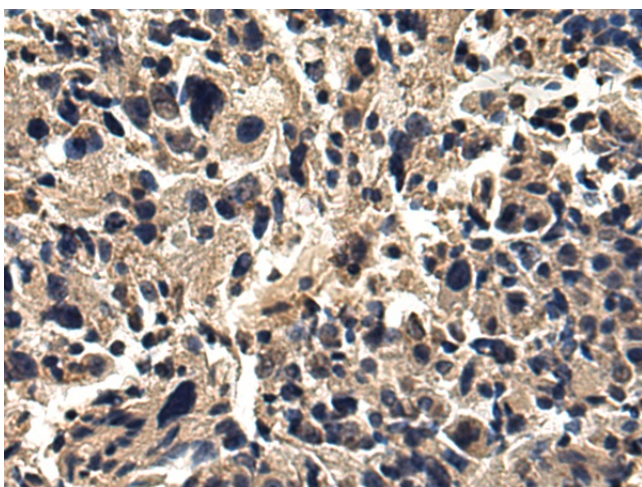
Gel: 8%SDS-PAGE
 Lysate: 40 µg
 Lane 1-4: A172
 LOVO
 A375
 HepG2 cell lysates
 Primary antibody: [TA369366] (SPRY2 Antibody)
 at dilution 1/800
 Secondary antibody: Goat anti rabbit IgG at
 1/5000 dilution
 Exposure time: 40 seconds



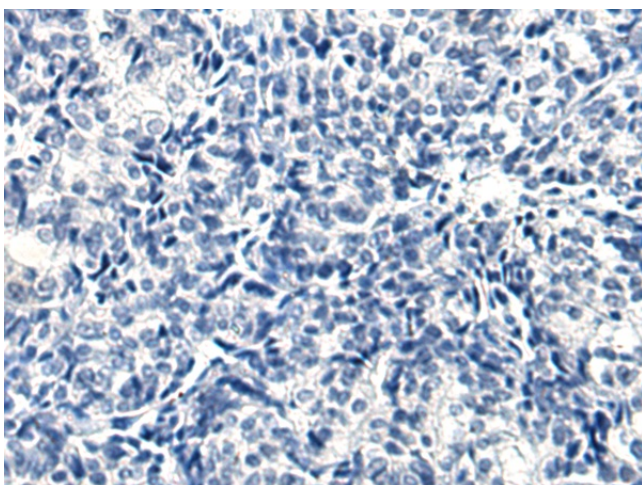
Immunohistochemistry of paraffin-embedded
 Human colorectal cancer tissue using [TA369366]
 (SPRY2 Antibody) at dilution 1/200 (Original
 magnification: ×200)



Immunohistochemistry of paraffin-embedded Human colorectal cancer tissue using [TA369366] (SPRY2 Antibody) at dilution 1/200, treated with fusion protein. (Original magnification: $\times 200$)



Immunohistochemistry of paraffin-embedded Human prostate cancer tissue using [TA369366] (SPRY2 Antibody) at dilution 1/200 (Original magnification: $\times 200$)



Immunohistochemistry of paraffin-embedded Human prostate cancer tissue using [TA369366] (SPRY2 Antibody) at dilution 1/200, treated with fusion protein. (Original magnification: $\times 200$)