

## Product datasheet for **TA369362**

### SNAP23 Rabbit Polyclonal Antibody

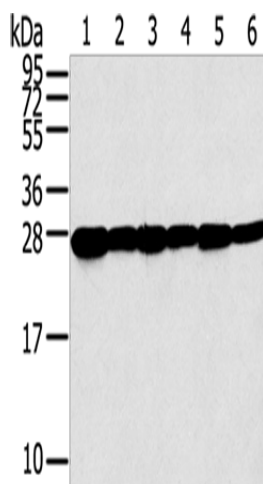
#### Product data:

Product Type:	Primary Antibodies
Applications:	WB
Recommended Dilution:	WB: 500-2000 WB positive control: Human normal liver tissue and A549 cells, human fetal liver tissue and hepg2 cells, hela cells and human placenta tissue
Reactivity:	Human, Mouse, Rat
Host:	Rabbit
Isotype:	IgG
Clonality:	Polyclonal
Immunogen:	Fusion protein of human SNAP23
Formulation:	pH7.4 PBS, 0.05% NaN <sub>3</sub> , 40% Glycerol
Concentration:	lot specific
Purification:	Antigen affinity purification
Conjugation:	Unconjugated
Storage:	Store at -20°C.
Stability:	1 year
Predicted Protein Size:	23 kDa
Gene Name:	synaptosome associated protein 23kDa
Database Link:	<a href="#">Entrez Gene 8773 Human O00161</a>
Background:	Specificity of vesicular transport is regulated, in part, by the interaction of a vesicle-associated membrane protein termed synaptobrevin/VAMP with a target compartment membrane protein termed syntaxin. These proteins, together with SNAP25 (synaptosome-associated protein of 25 kDa), form a complex which serves as a binding site for the general membrane fusion machinery.
Synonyms:	HsT17016; OTTHUMP00000161263; SNAP-23; SNAP23A; SNAP23B



[View online »](#)

## Product images:



Gel: 12%SDS-PAGE

Lysate: 40  $\mu$ g

Lane 1-6: Human normal liver tissue

A549 cells

human fetal liver tissue

hepg2 cells

hela cells

human placenta tissue

Primary antibody: TA369362 (SNAP23 Antibody)  
at dilution 1/200

Secondary antibody: Goat anti rabbit IgG at  
1/8000 dilution

Exposure time: 5 seconds