

## Product datasheet for **TA369361**

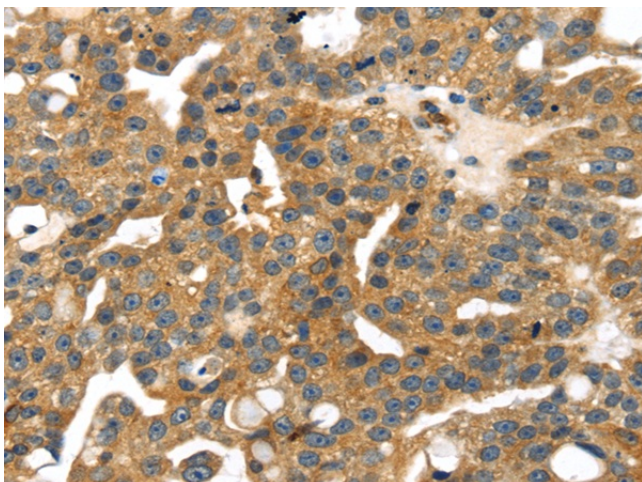
### SMYD4 Rabbit Polyclonal Antibody

#### Product data:

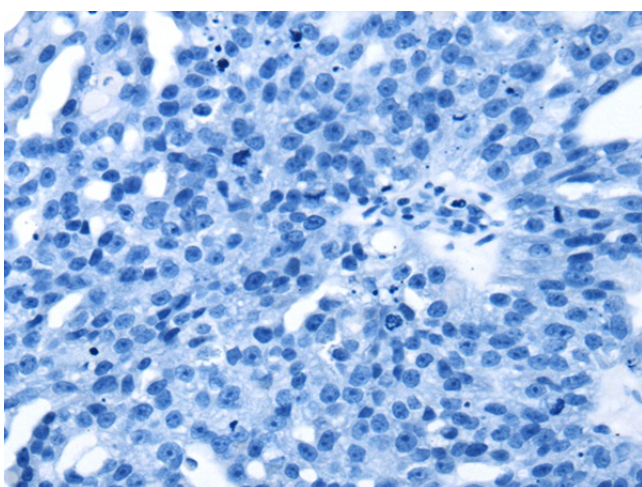
|                       |  |
|-----------------------|--|
| Product Type:         | Primary Antibodies   |
| Applications:         | IHC  |
| Recommended Dilution: | IHC: 25-100<br>Positive control: Human breast cancer<br>Predicted cell location: Cytoplasm and Cell membrane |
| Reactivity:           | Human  |
| Host:                 | Rabbit   |
| Isotype:              | IgG  |
| Clonality:            | Polyclonal   |
| Immunogen:            | Fusion protein of human SMYD4  |
| Formulation:          | pH7.4 PBS, 0.05% NaN <sub>3</sub> , 40% Glycerol   |
| Concentration:        | lot specific   |
| Purification:         | Antigen affinity purification  |
| Conjugation:          | Unconjugated   |
| Storage:              | Store at -20°C.  |
| Stability:            | 1 year   |
| Gene Name:            | SET and MYND domain containing 4   |
| Database Link:        | <a href="#">Entrez Gene 114826 Human Q8IYR2</a>  |
| Background:           | The specific function of the protein remains unknown.  |
| Synonyms:             | KIAA1936; ZMYND21  |



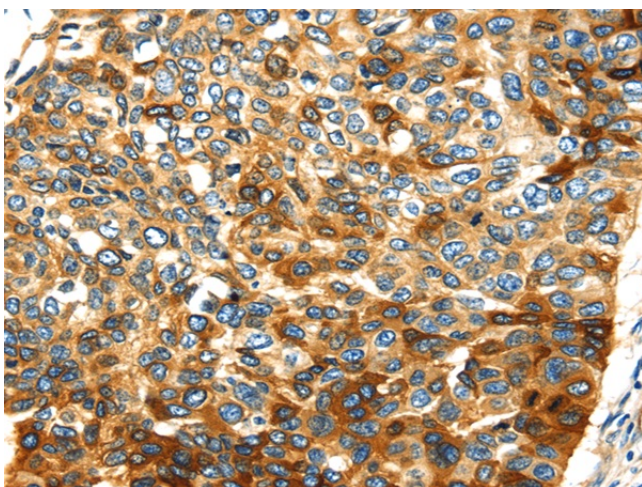
[View online »](#)

**Product images:**

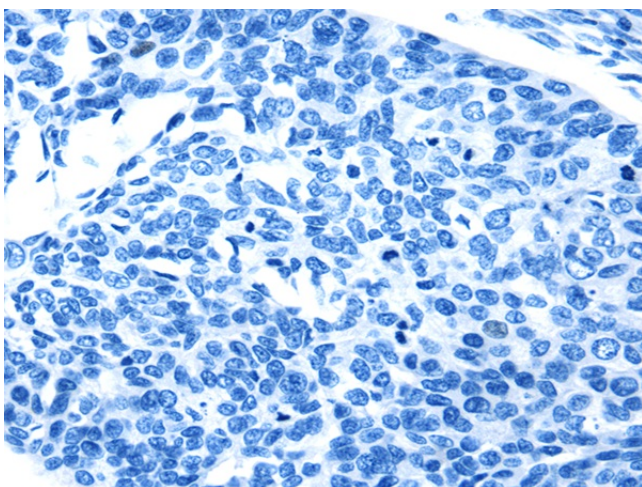
Immunohistochemistry of paraffin-embedded Human breast cancer tissue using TA369361 (SMYD4 Antibody) at dilution 1/30 (Original magnification: ×200)



Immunohistochemistry of paraffin-embedded Human breast cancer tissue using TA369361 (SMYD4 Antibody) at dilution 1/30, treated with fusion protein. (Original magnification: ×200)



Immunohistochemistry of paraffin-embedded Human esophagus cancer tissue using TA369361 (SMYD4 Antibody) at dilution 1/30 (Original magnification: ×200)



Immunohistochemistry of paraffin-embedded Human esophagus cancer tissue using TA369361 (SMYD4 Antibody) at dilution 1/30, treated with fusion protein. (Original magnification: ×200)