

Product datasheet for **TA369352**

SLC27A4 Rabbit Polyclonal Antibody

Product data:

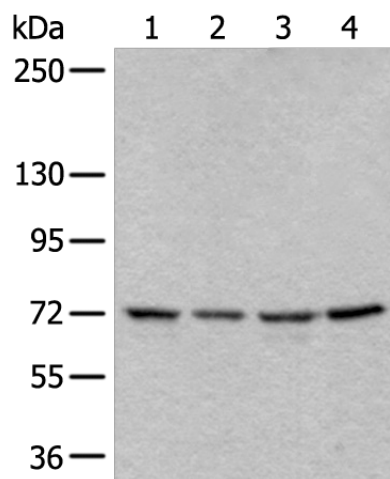
Product Type:	Primary Antibodies
Applications:	IHC, WB
Recommended Dilution:	WB: 200-1000 WB positive control: PC-3□Hela□293T and HEPG2 cell lysates IHC: 25-100 Positive control: Human brain Predicted cell location: Cytoplasm
Reactivity:	Human, Mouse
Host:	Rabbit
Isotype:	IgG
Clonality:	Polyclonal
Immunogen:	Fusion protein of human SLC27A4
Formulation:	pH7.4 PBS, 0.05% NaN ₃ , 40% Glycerol
Concentration:	lot specific
Purification:	Antigen affinity purification
Conjugation:	Unconjugated
Storage:	Store at -20°C.
Stability:	1 year
Predicted Protein Size:	72 kDa
Gene Name:	solute carrier family 27 member 4
Database Link:	Entrez Gene 10999 Human Q6P1M0
Background:	This gene encodes a member of a family of fatty acid transport proteins, which are involved in translocation of long-chain fatty acids cross the plasma membrane. This protein is expressed at high levels on the apical side of mature enterocytes in the small intestine, and appears to be the principal fatty acid transporter in enterocytes. Clinical studies suggest this gene as a candidate gene for the insulin resistance syndrome. Mutations in this gene have been associated with ichthyosis prematurity syndrome.



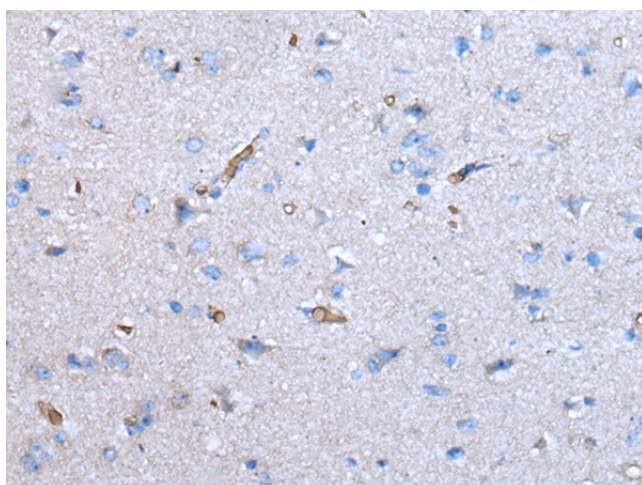
[View online »](#)

Synonyms: ACSVL4; FATP-4; FATP4; IPS

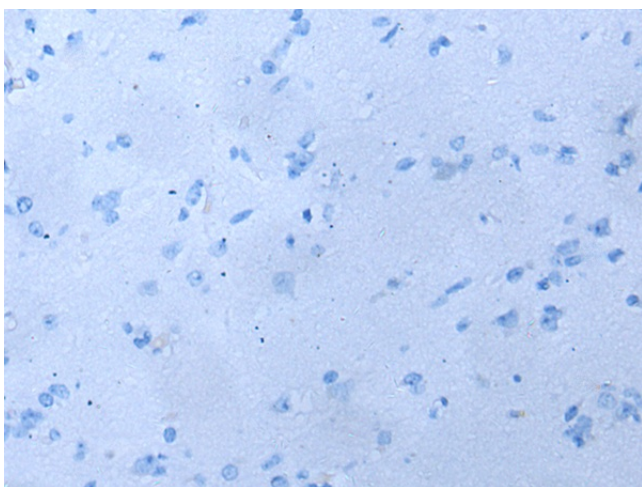
Product images:



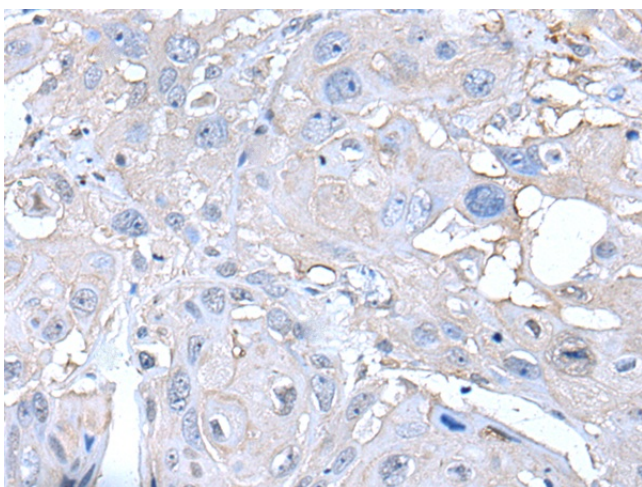
Gel: 6%SDS-PAGE
Lysate: 40 μ g
Lane 1-4: PC-3
HeLa
293T and HEPG2 cell lysates
Primary antibody: TA369352 (SLC27A4 Antibody)
at dilution 1/350
Secondary antibody: Goat anti rabbit IgG at
1/8000 dilution
Exposure time: 20 seconds



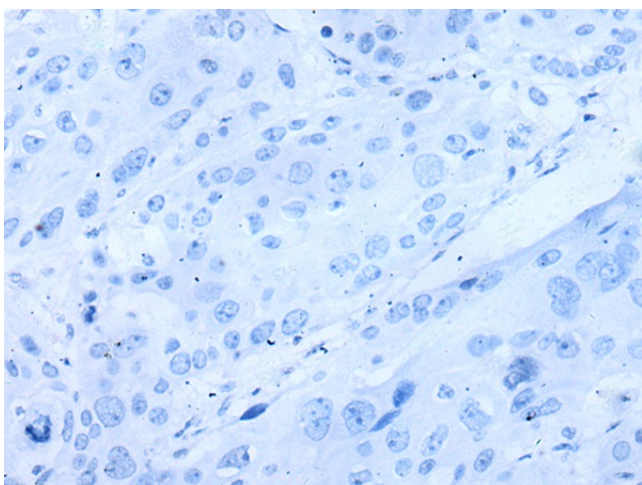
Immunohistochemistry of paraffin-embedded
Human brain tissue using TA369352 (SLC27A4
Antibody) at dilution 1/35 (Original magnification:
 \times 200)



Immunohistochemistry of paraffin-embedded Human brain tissue using TA369352 (SLC27A4 Antibody) at dilution 1/35, treated with fusion protein. (Original magnification: $\times 200$)



Immunohistochemistry of paraffin-embedded Human esophagus cancer tissue using TA369352 (SLC27A4 Antibody) at dilution 1/35 (Original magnification: $\times 200$)



Immunohistochemistry of paraffin-embedded Human esophagus cancer tissue using TA369352 (SLC27A4 Antibody) at dilution 1/35, treated with fusion protein. (Original magnification: $\times 200$)