

Product datasheet for **TA369341**

SENP8 Rabbit Polyclonal Antibody

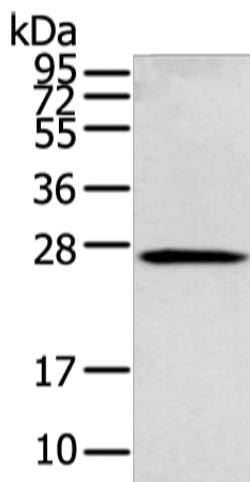
Product data:

Product Type:	Primary Antibodies
Applications:	IHC, WB
Recommended Dilution:	WB: 500-2000 WB positive control: 293T cell IHC: 25-100 Positive control: Human brain Predicted cell location: Cytoplasm
Reactivity:	Human, Mouse, Rat
Host:	Rabbit
Isotype:	IgG
Clonality:	Polyclonal
Immunogen:	Full length fusion protein
Formulation:	pH7.4 PBS, 0.05% NaN ₃ , 40% Glycerol
Concentration:	lot specific
Purification:	Antigen affinity purification
Conjugation:	Unconjugated
Storage:	Store at -20°C.
Stability:	1 year
Predicted Protein Size:	24 kDa
Gene Name:	SUMO/sentrin peptidase family member, NEDD8 specific
Database Link:	Entrez Gene 123228 Human Q96LD8
Background:	This gene encodes a cysteine protease that is a member of the sentrin-specific protease family. The encoded protein is involved in processing and deconjugation of the ubiquitin-like protein termed, neural precursor cell expressed developmentally downregulated 8. Alternate splicing results in multiple transcript variants.
Synonyms:	DEN1; Deneddylase-1; HsT17512; NEDP1; PRSC2

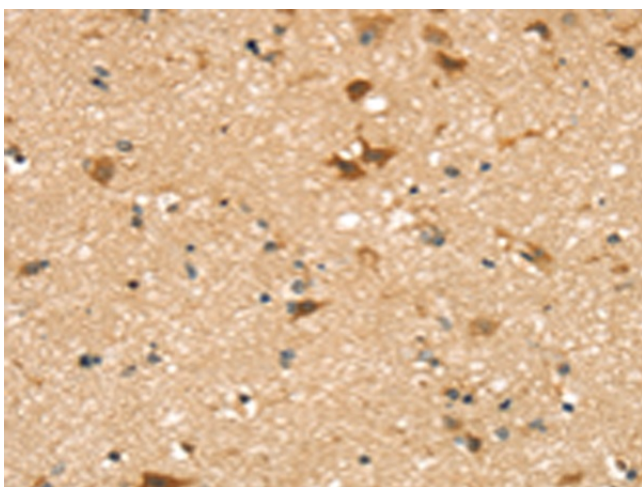


[View online »](#)

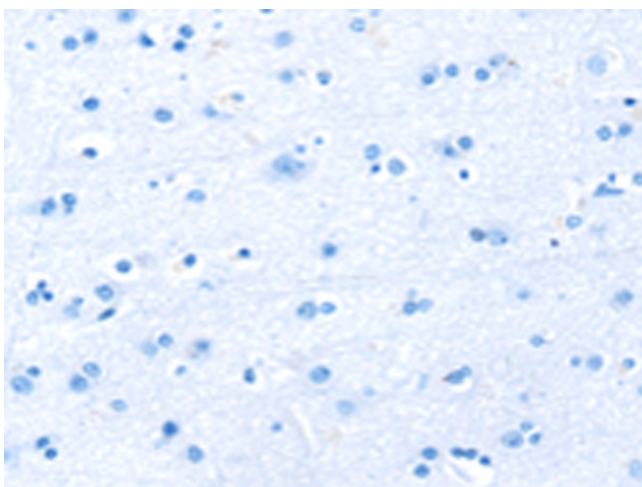
Product images:



Gel: 12%SDS-PAGE
Lysate: 60 μ g
Lane: 293T cell
Primary antibody: TA369341 (SENP8 Antibody) at dilution 1/400
Secondary antibody: Goat anti rabbit IgG at 1/8000 dilution
Exposure time: 15 seconds



Immunohistochemistry of paraffin-embedded Human brain tissue using TA369341 (SENP8 Antibody) at dilution 1/25 (Original magnification: \times 200)



Immunohistochemistry of paraffin-embedded Human brain tissue using TA369341 (SENP8 Antibody) at dilution 1/25, treated with fusion protein. (Original magnification: x200)