

Product datasheet for **TA369335**

SAA4 Rabbit Polyclonal Antibody

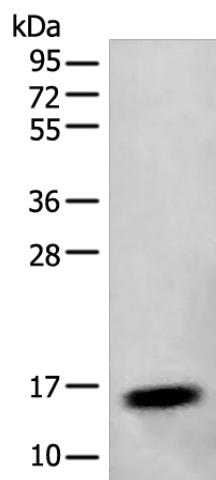
Product data:

Product Type:	Primary Antibodies
Applications:	WB
Recommended Dilution:	WB: 500-2000 WB positive control: Human plasma solution
Reactivity:	Human
Host:	Rabbit
Isotype:	IgG
Clonality:	Polyclonal
Immunogen:	Full length fusion protein
Formulation:	pH7.4 PBS, 0.05% NaN ₃ , 40% Glycerol
Concentration:	lot specific
Purification:	Antigen affinity purification
Conjugation:	Unconjugated
Storage:	Store at -20°C.
Stability:	1 year
Predicted Protein Size:	15 kDa
Gene Name:	serum amyloid A4, constitutive
Database Link:	Entrez Gene 6291 Human P35542
Background:	Major acute phase reactant. Apolipoprotein of the HDL complex.
Synonyms:	C-SAA; CSAA



[View online »](#)

Product images:



Gel: 12%SDS-PAGE
Lysate: 40 μ g
Lane: Human plasma solution
Primary antibody: TA369335 (SAA4 Antibody) at dilution 1/400
Secondary antibody: Goat anti rabbit IgG at 1/8000 dilution
Exposure time: 20 seconds