

Product datasheet for **TA369329**

RRBP1 Rabbit Polyclonal Antibody

Product data:

Product Type:	Primary Antibodies
Applications:	WB
Recommended Dilution:	WB: 500-2000 WB positive control: Rat liver tissue, Mouse pancreas tissue lysates
Reactivity:	Human, Mouse, Rat
Host:	Rabbit
Isotype:	IgG
Clonality:	Polyclonal
Immunogen:	Fusion protein of human RRBP1
Formulation:	pH7.4 PBS, 0.05% NaN ₃ , 40% Glycerol
Concentration:	lot specific
Purification:	Antigen affinity purification
Conjugation:	Unconjugated
Storage:	Store at -20°C.
Stability:	1 year
Predicted Protein Size:	103 kDa
Gene Name:	ribosome binding protein 1
Database Link:	Entrez Gene 6238 Human Q9P2E9



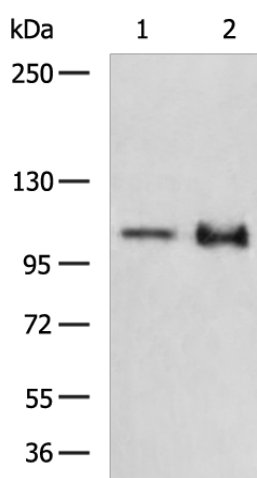
[View online »](#)

Background:

This gene encodes a ribosome-binding protein of the endoplasmic reticulum (ER) membrane. Studies suggest that this gene plays a role in ER proliferation, secretory pathways and secretory cell differentiation, and mediation of ER-microtubule interactions. Alternative splicing has been observed and protein isoforms are characterized by regions of N-terminal decapeptide and C-terminal heptad repeats. Splicing of the tandem repeats results in variations in ribosome-binding affinity and secretory function. The full-length nature of variants which differ in repeat length has not been determined. Pseudogenes of this gene have been identified on chromosomes 3 and 7, and RRBP1 has been excluded as a candidate gene in the cause of Alagille syndrome, the result of a mutation in a nearby gene on chromosome 20p12.

Synonyms:

DKFZp586A1420; ES/130; ES130; FLJ36146; hES; KIAA1398; MGC157720; MGC157721

Product images:

Gel: 6%SDS-PAGE
Lysate: 40 μ g
Lane 1-2: Rat liver tissue
Mouse pancreas tissue lysates
Primary antibody: TA369329 (RRBP1 Antibody) at dilution 1/1350
Secondary antibody: Goat anti rabbit IgG at 1/5000 dilution
Exposure time: 30 seconds