

Product datasheet for **TA369326**

RPA34 (RPA2) Rabbit Polyclonal Antibody

Product data:

Product Type:	Primary Antibodies
Applications:	IHC, WB
Recommended Dilution:	WB: 500-2000 WB positive control: 231, Jurkat, A549, huvec and Hela cells IHC: 30-150 Positive control: Human ovarian cancer Predicted cell location: Nucleus and Cytoplasm
Reactivity:	Human
Host:	Rabbit
Isotype:	IgG
Clonality:	Polyclonal
Immunogen:	Full length fusion protein
Formulation:	pH7.4 PBS, 0.05% NaN ₃ , 40% Glycerol
Concentration:	lot specific
Purification:	Antigen affinity purification
Conjugation:	Unconjugated
Storage:	Store at -20°C.
Stability:	1 year
Predicted Protein Size:	29 kDa
Gene Name:	replication protein A2
Database Link:	Entrez Gene 6118 Human P15927

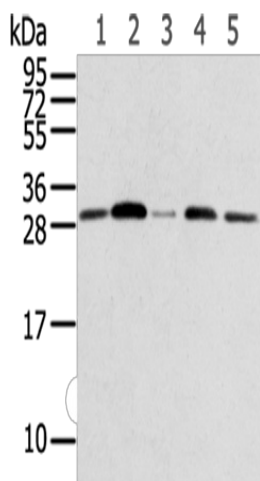
Background: Replication protein A 32 kDa subunit is a protein that in humans is encoded by the RPA2 gene. As part of the heterotrimeric replication protein A complex (RPA/RP-A), binds and stabilizes single-stranded DNA intermediates, that form during DNA replication or upon DNA stress. It prevents their reannealing and in parallel, recruits and activates different proteins and complexes involved in DNA metabolism. Thereby, it plays an essential role both in DNA replication and the cellular response to DNA damage.



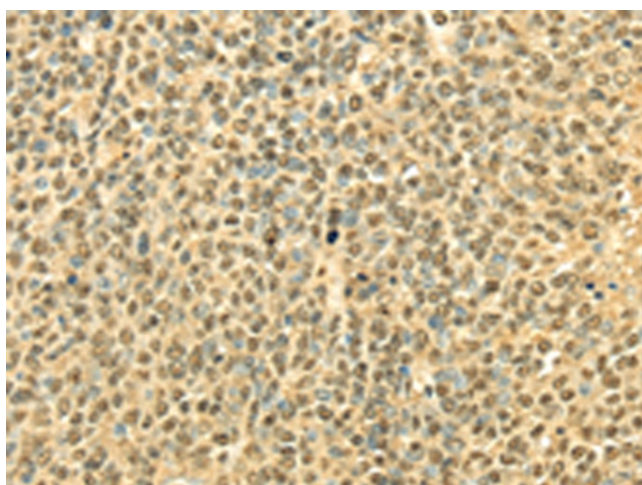
[View online »](#)

Synonyms: REPA2; RPA32; RPA34

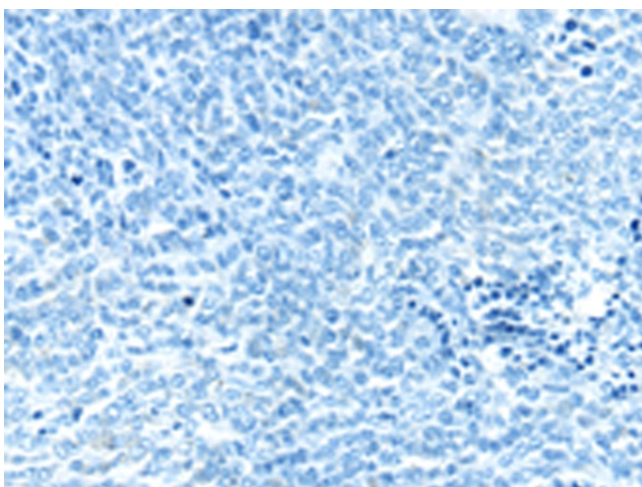
Product images:



Gel: 12%SDS-PAGE
 Lysate: 40 µg
 Lane 1-5: 231 cells
 Jurkat cells
 A549 cells
 HUVEC cells
 Hela cells
 Primary antibody: TA369326 (RPA2 Antibody) at dilution 1/600
 Secondary antibody: Goat anti rabbit IgG at 1/8000 dilution
 Exposure time: 10 seconds



Immunohistochemistry of paraffin-embedded Human ovarian cancer tissue using TA369326 (RPA2 Antibody) at dilution 1/40 (Original magnification: ×200)



Immunohistochemistry of paraffin-embedded Human ovarian cancer tissue using TA369326 (RPA2 Antibody) at dilution 1/40, treated with fusion protein. (Original magnification: $\times 200$)