

Product datasheet for **TA369313S**

RGS6 Rabbit Polyclonal Antibody

Product data:

| | |
|-----------------------|--|
| Product Type: | Primary Antibodies |
| Applications: | IHC |
| Recommended Dilution: | IHC: 200-400 Positive control: Human gastric cancer Predicted cell location: Cytoplasm and Nucleus |
| Reactivity: | Human, Mouse |
| Host: | Rabbit |
| Isotype: | IgG |
| Clonality: | Polyclonal |
| Immunogen: | Fusion protein of human RGS6 |
| Formulation: | pH7.4 PBS, 0.05% NaN ₃ , 40% Glycerol |
| Purification: | Antigen affinity purification |
| Conjugation: | Unconjugated |
| Storage: | Store at -20°C. |
| Stability: | 1 year |
| Gene Name: | regulator of G-protein signaling 6 |
| Database Link: | Entrez Gene 9628 Human P49758 |

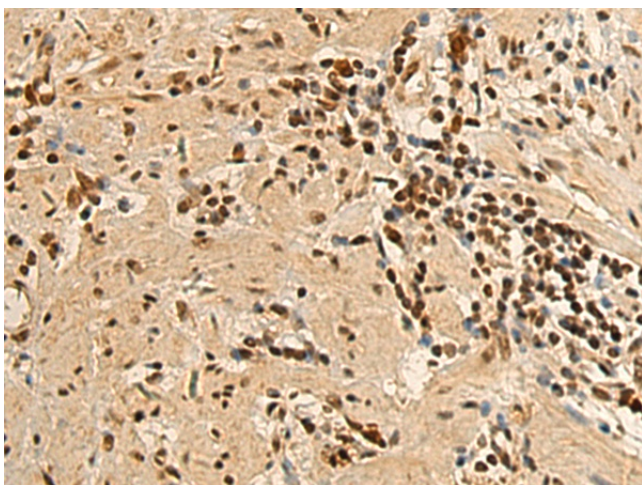
Background: This gene encodes a member of the RGS (regulator of G protein signaling) family of proteins, which are defined by the presence of a RGS domain that confers the GTPase-activating activity of these proteins toward certain G alpha subunits. This protein also belongs to a subfamily of RGS proteins characterized by the presence of DEP and GGL domains, the latter a G beta 5-interacting domain. The RGS proteins negatively regulate G protein signaling, and may modulate neuronal, cardiovascular, lymphocytic activities, and cancer risk. Many alternatively spliced transcript variants encoding different isoforms with long or short N-terminal domains, complete or incomplete GGL domains, and distinct C-terminal domains, have been described for this gene, however, the full-length nature of some of these variants is not known.



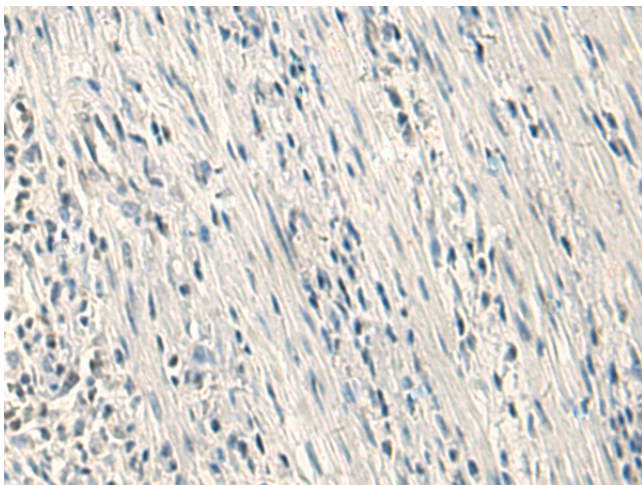
[View online »](#)

Synonyms: DKFZp313G1241; FLJ43552; GAP; H_DJ0283M22.1; H_DJ1108A12.1; MGC142132; S914; WUGSC:H_DJ0283M22.1; WUGSC:H_DJ1108A12.1

Product images:



Immunohistochemistry of paraffin-embedded Human gastric cancer tissue using [TA369313] (RGS6 Antibody) at dilution 1/200 (Original magnification: x200)



Immunohistochemistry of paraffin-embedded Human gastric cancer tissue using [TA369313] (RGS6 Antibody) at dilution 1/200, treated with fusion protein. (Original magnification: x200)