

## Product datasheet for **TA369313**

### RGS6 Rabbit Polyclonal Antibody

#### Product data:

Product Type:	Primary Antibodies
Applications:	IHC
Recommended Dilution:	IHC: 200-400 Positive control: Human gastric cancer Predicted cell location: Cytoplasm and Nucleus
Reactivity:	Human, Mouse
Host:	Rabbit
Isotype:	IgG
Clonality:	Polyclonal
Immunogen:	Fusion protein of human RGS6
Formulation:	pH7.4 PBS, 0.05% NaN <sub>3</sub> , 40% Glycerol
Concentration:	lot specific
Purification:	Antigen affinity purification
Conjugation:	Unconjugated
Storage:	Store at -20°C.
Stability:	1 year
Gene Name:	regulator of G-protein signaling 6
Database Link:	<a href="#">Entrez Gene 9628 Human P49758</a>



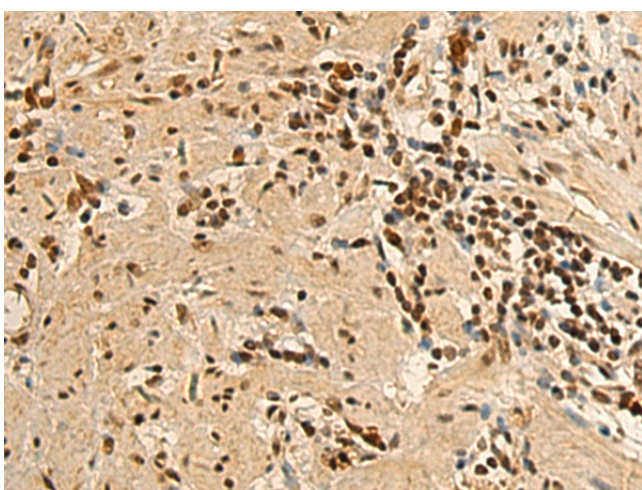
[View online »](#)

**Background:**

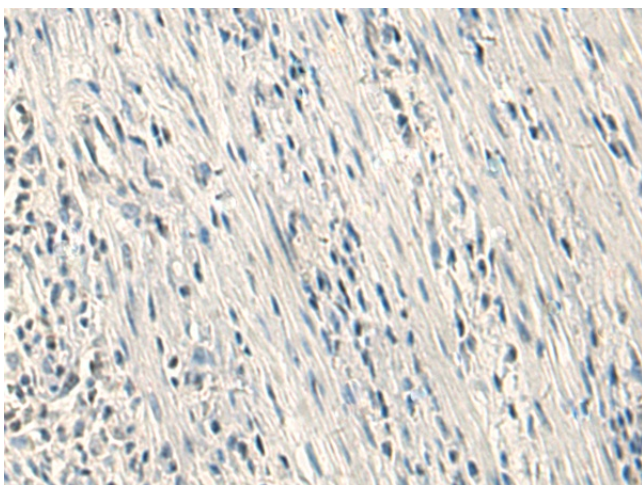
This gene encodes a member of the RGS (regulator of G protein signaling) family of proteins, which are defined by the presence of a RGS domain that confers the GTPase-activating activity of these proteins toward certain G alpha subunits. This protein also belongs to a subfamily of RGS proteins characterized by the presence of DEP and GGL domains, the latter a G beta 5-interacting domain. The RGS proteins negatively regulate G protein signaling, and may modulate neuronal, cardiovascular, lymphocytic activities, and cancer risk. Many alternatively spliced transcript variants encoding different isoforms with long or short N-terminal domains, complete or incomplete GGL domains, and distinct C-terminal domains, have been described for this gene, however, the full-length nature of some of these variants is not known.

**Synonyms:**

DKFZp313G1241; FLJ43552; GAP; H\_DJ0283M22.1; H\_DJ1108A12.1; MGC142132; S914; WUGSC:H\_DJ0283M22.1; WUGSC:H\_DJ1108A12.1

**Product images:**

Immunohistochemistry of paraffin-embedded Human gastric cancer tissue using TA369313 (RGS6 Antibody) at dilution 1/200 (Original magnification: x200)



Immunohistochemistry of paraffin-embedded Human gastric cancer tissue using TA369313 (RGS6 Antibody) at dilution 1/200, treated with fusion protein. (Original magnification: x200)