

## Product datasheet for **TA369309S**

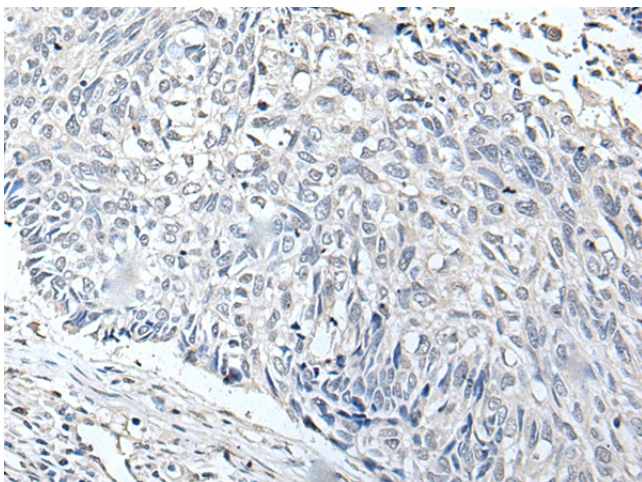
### RERG Rabbit Polyclonal Antibody

#### Product data:

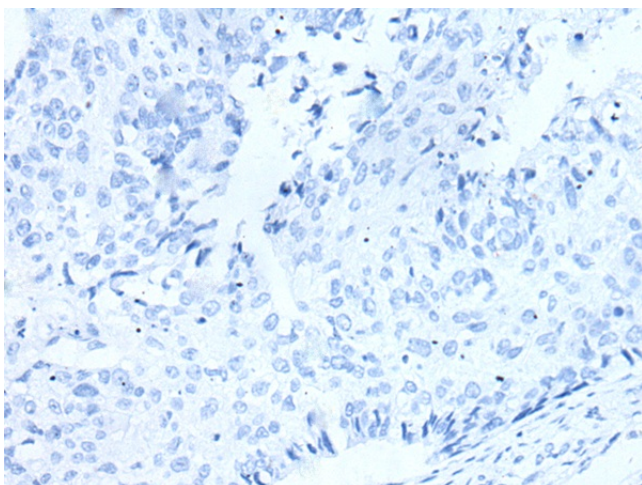
Product Type:	Primary Antibodies
Applications:	IHC
Recommended Dilution:	IHC: 50-350 Positive control: Human lung cancer Predicted cell location: Cytoplasm
Reactivity:	Human, Mouse
Host:	Rabbit
Isotype:	IgG
Clonality:	Polyclonal
Immunogen:	Full length fusion protein
Formulation:	pH7.4 PBS, 0.05% NaN <sub>3</sub> , 40% Glycerol
Purification:	Antigen affinity purification
Conjugation:	Unconjugated
Storage:	Store at -20°C.
Stability:	1 year
Gene Name:	RAS like estrogen regulated growth inhibitor
Database Link:	<a href="#">Entrez Gene 85004 Human Q96A58</a>
Background:	RERG, a member of the RAS superfamily of GTPases, inhibits cell proliferation and tumor formation (Finlin et al., 2001 [PubMed 11533059]).
Synonyms:	MGC15754



[View online »](#)

**Product images:**

Immunohistochemistry of paraffin-embedded Human lung cancer tissue using [TA369309] (RERG Antibody) at dilution 1/65 (Original magnification:  $\times 200$ )



Immunohistochemistry of paraffin-embedded Human lung cancer tissue using [TA369309] (RERG Antibody) at dilution 1/65, treated with fusion protein. (Original magnification:  $\times 200$ )